

Tredyffrin / Easttown Community

Overview of Youth Survey Results - 2003



The Coad Group

930 East Lancaster Avenue, Exton, PA 19341

Contact Person: Laura Heikkila, Executive Director
(610) 363-6164, LHeikkila@coadgroup.com

Drug and Alcohol Prevention Principles: A Public Health Model

- Planned strategies designed to preclude or reduce the use of drugs and alcohol, which have a negative impact on the individual, the family, the community and society at large.
- Risk and protective factor-focused prevention is based on the simple premise: to prevent a problem from happening, you must first identify the factors that increase the risk of that problem developing and then find ways to reduce those risks.

Protective Factors

- Those conditions that protect individuals from the negative consequences of exposure to risks by:
 - Reducing the impact of the risk
 - Changing the way a person responds to the risk

Risk Factors

- Those conditions that increase the likelihood that an individual will engage in at-risk behaviors

Risk and Protective Factors are grouped into four Domains

- Community
- Family
- School
- Individual and Peer

Risk and Protective Factors Exist in Multiple Domains

- This is important because if prevention efforts are only focused on one risk in a single domain, a community may not significantly reduce problem behaviors
- This also means that prevention is everyone's business

PERCEIVED RISKS

- Risk factors that are *perceived* are also associated with increased risk
- For example, in schools where young people just think that drugs are more available, a higher rate of drug use occurs

Fall 2003
Pennsylvania Youth Survey

T/E Community Results

VS.

Chester County

VS.

Pennsylvania

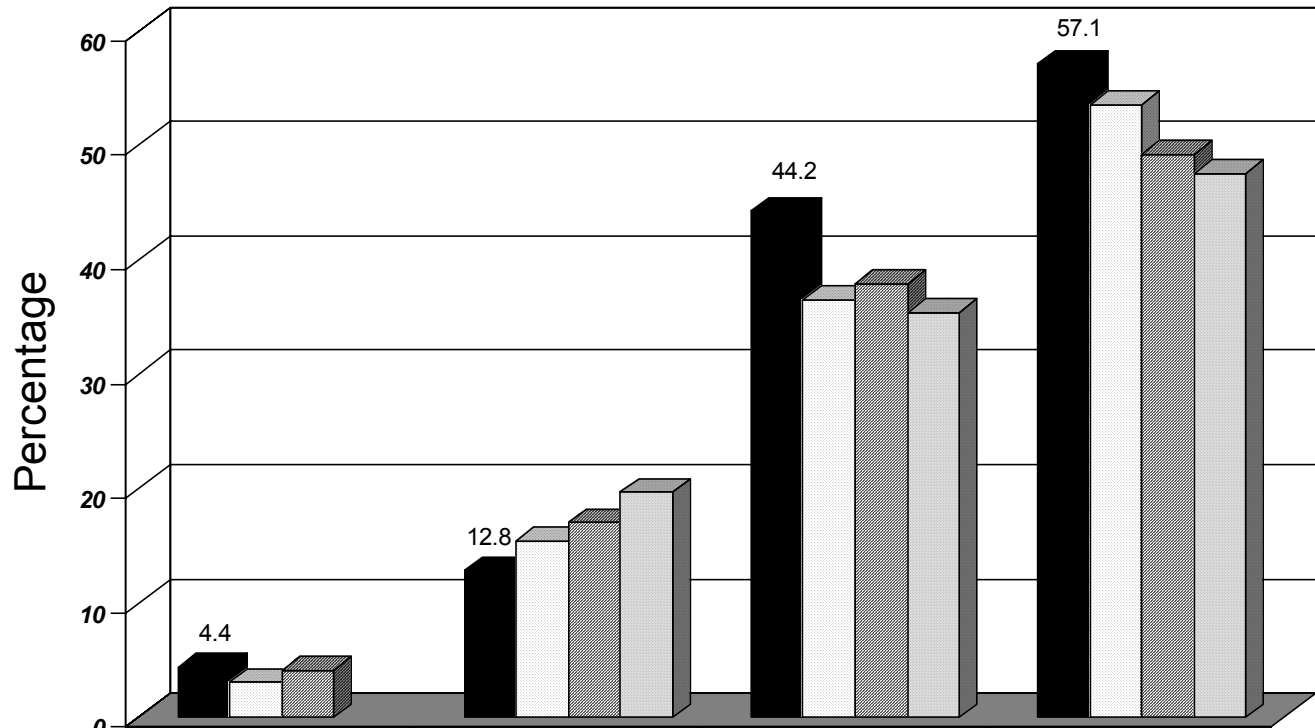
VS.

Monitoring the Future (National)

Key Points

- All twelve Chester County School Districts, plus one Center for Arts & Technology participated
- In Fall of 2003, students in grades 6, 8, 10 and 12 were surveyed including:
 - 1,659 in the T/E Community
 - 16,725 in Chester County
 - 38,845 in Pennsylvania
- Four strategies were used to assess the validity of the surveys; the following would be excluded:
 - Youth who exaggerate their use of drugs
 - Youth who exaggerate the frequency of other antisocial behaviors
 - Reported use of “Derbisol”, a fictitious drug
 - Repeated logically inconsistent pattern of substance use

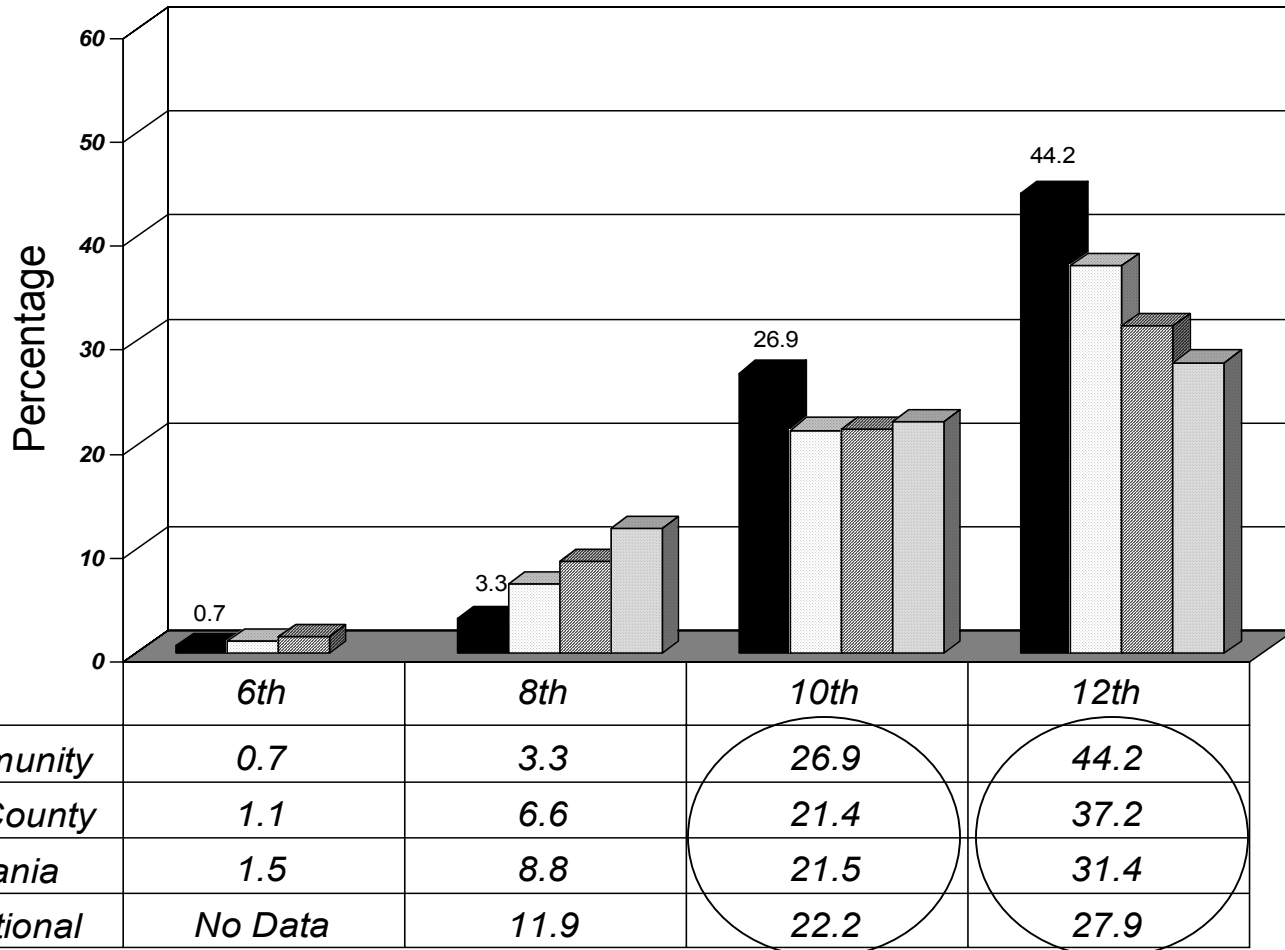
Alcohol – Past 30-Day Use - 2003



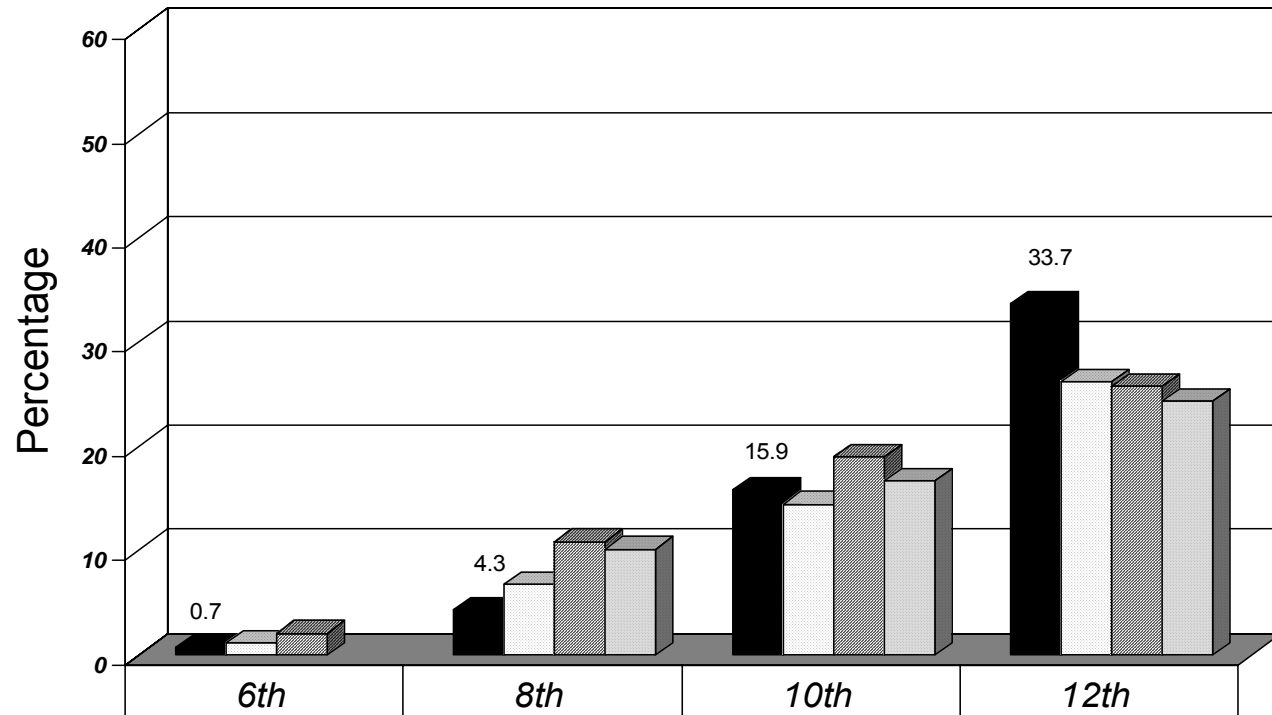
	6th	8th	10th	12th
■ T/E Community	4.4	12.8	44.2	57.1
□ Chester County	3.1	15.4	36.5	53.5
▨ Pennsylvania	4.1	17.0	37.9	49.2
▤ MTF - National	No Data	19.7	35.4	47.5

Binge Drinking – 2003

(Five or More Drinks in a Row in the Past Two Weeks)



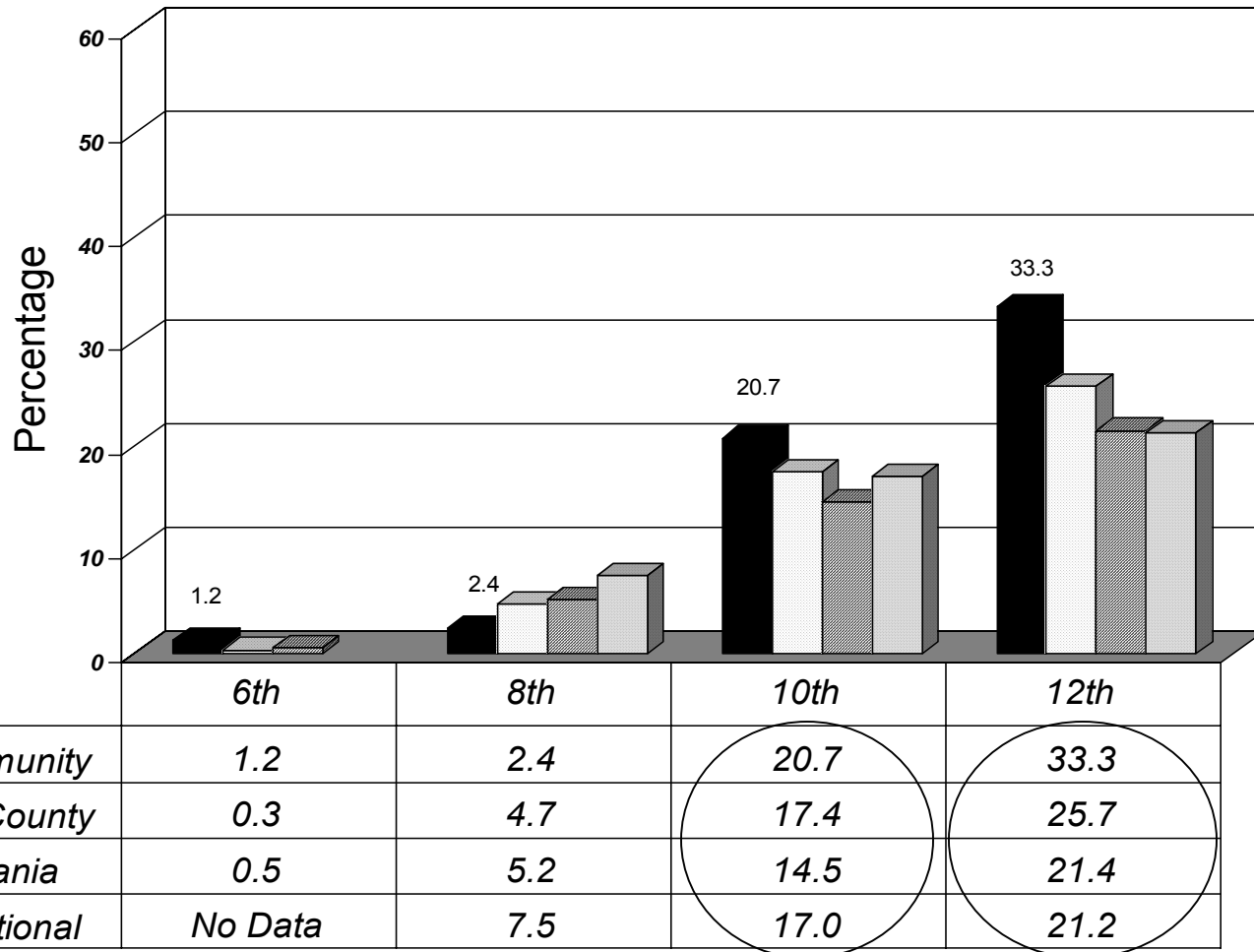
Cigarettes – Past 30-Day Use - 2003



■ <i>T/E Community</i>	0.7	4.3	15.9	33.7
□ <i>Chester County</i>	1.2	6.8	14.5	26.3
▨ <i>Pennsylvania</i>	2.1	10.9	19.0	25.8
■ <i>MTF - National</i>	No Data	10.2	16.7	24.4

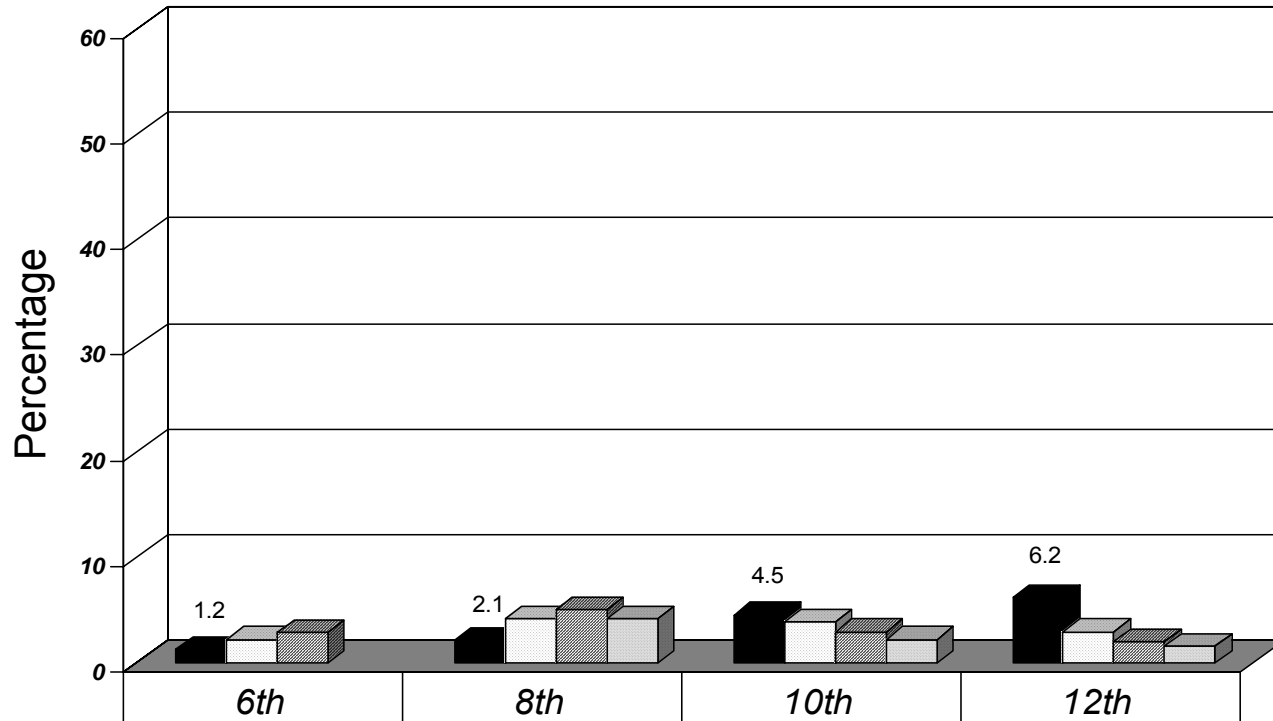
Marijuana – Past 30-Day Use - 2003

(Pot, Hash, Weed, etc.)



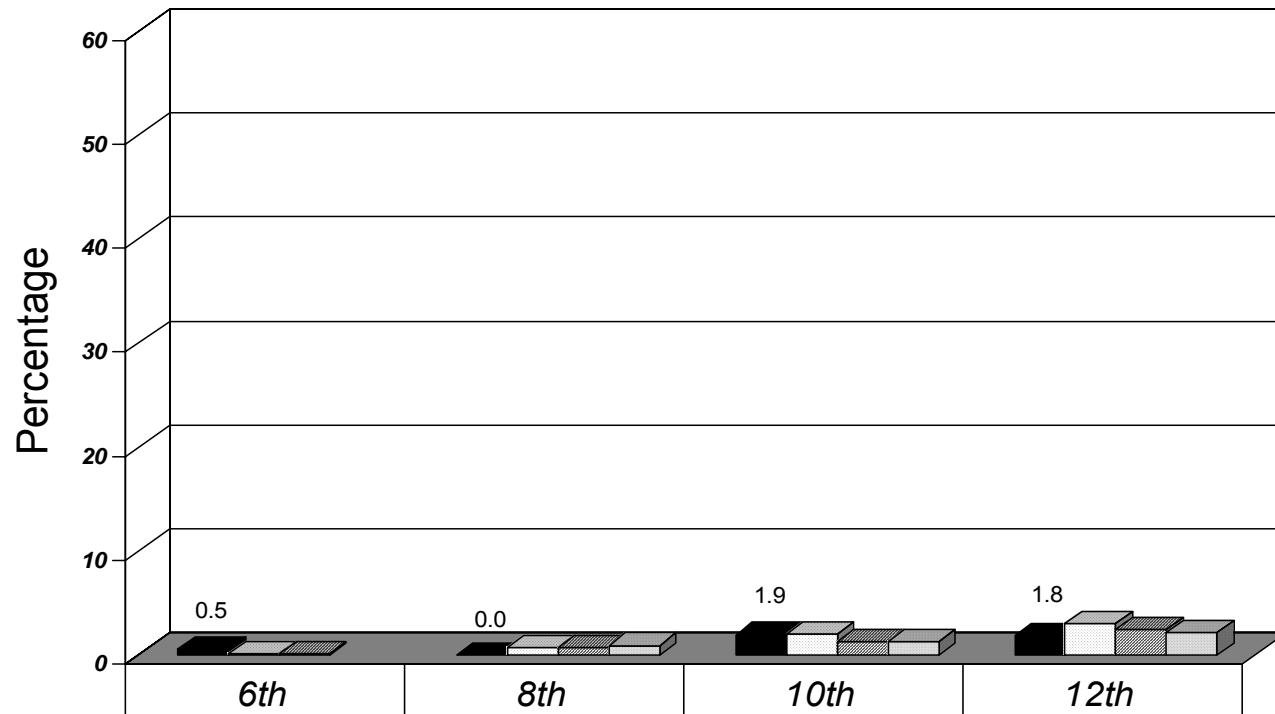
Inhalants – Past 30-Day Use – 2003

(Whippets, Butane, Paint Thinner or Glue to Sniff, etc.)



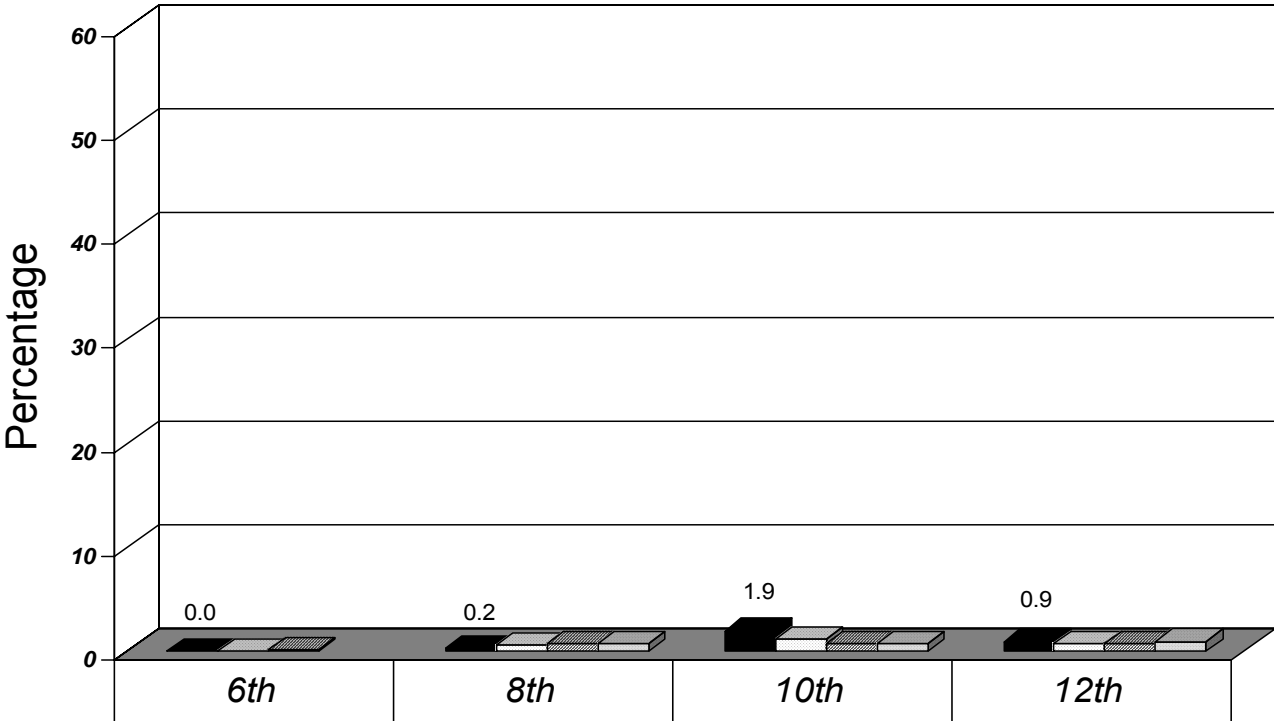
■ <i>T/E Community</i>	1.2	2.1	4.5	6.2
□ <i>Chester County</i>	2.2	4.1	3.8	2.9
▨ <i>Pennsylvania</i>	2.8	5.0	2.9	2.0
■ <i>MTF - National</i>	No Data	4.1	2.2	1.5

Cocaine – Past 30-Day Use – 2003



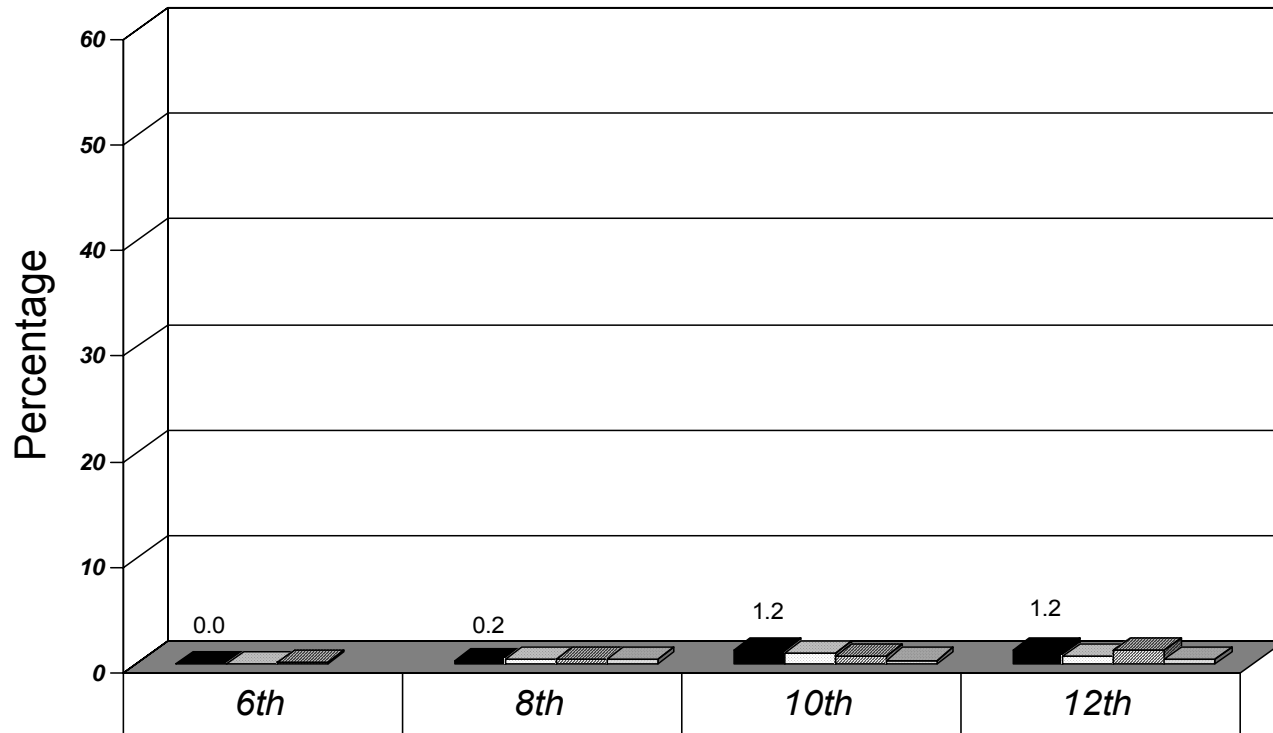
■ <i>T/E Community</i>	0.5	0.0	1.9	1.8
□ <i>Chester County</i>	0.1	0.7	2.0	3.0
▨ <i>Pennsylvania</i>	0.1	0.7	1.3	2.4
■ <i>MTF - National</i>	No Data	0.9	1.3	2.1

Crack Cocaine – Past 30-Day Use – 2003



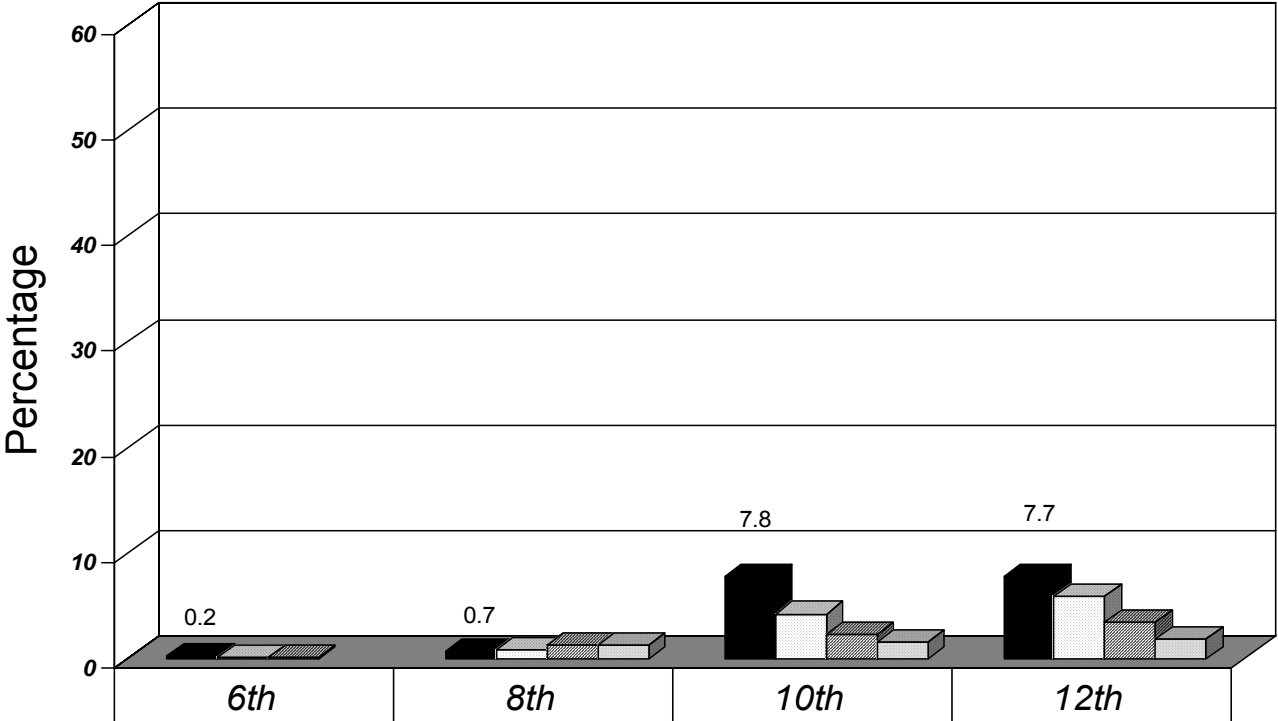
■ <i>T/E Community</i>	0.0	0.2	1.9	0.9
□ <i>Chester County</i>	0.0	0.5	1.1	0.7
▨ <i>Pennsylvania</i>	0.1	0.7	0.7	0.7
■ <i>MTF - National</i>	No Data	0.7	0.7	0.9

Heroin – Past 30-Day Use – 2003



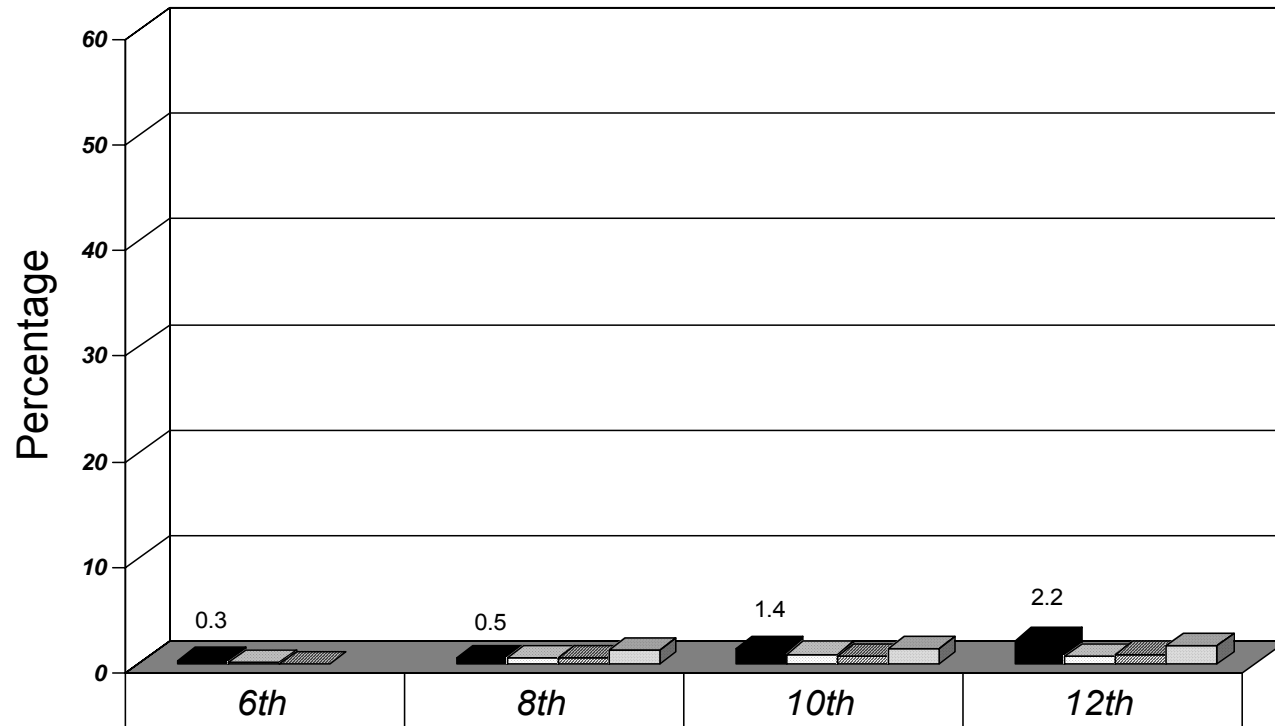
	6th	8th	10th	12th
■ <i>T/E Community</i>	0.0	0.2	1.2	1.2
□ <i>Chester County</i>	0.0	0.4	1.0	0.7
▨ <i>Pennsylvania</i>	0.1	0.4	0.7	1.3
▤ <i>MTF - National</i>	No Data	0.4	0.3	0.4

Hallucinogens – Past 30-Day Use – 2003



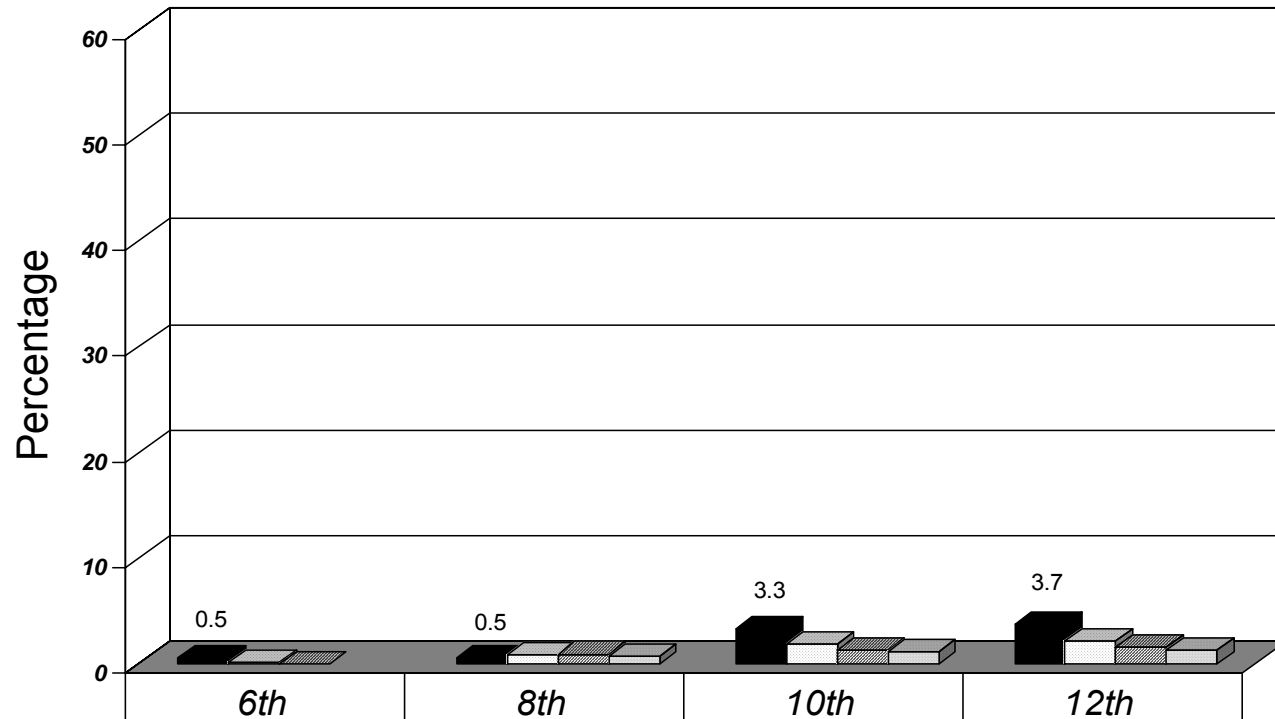
	6th	8th	10th	12th
■ <i>T/E Community</i>	0.2	0.7	7.8	7.7
□ <i>Chester County</i>	0.1	0.8	4.2	5.9
▨ <i>Pennsylvania</i>	0.1	1.3	2.3	3.4
■ <i>MTF - National</i>	No Data	1.2	1.5	1.8

Methamphetamine – Past 30-Day Use – 2003



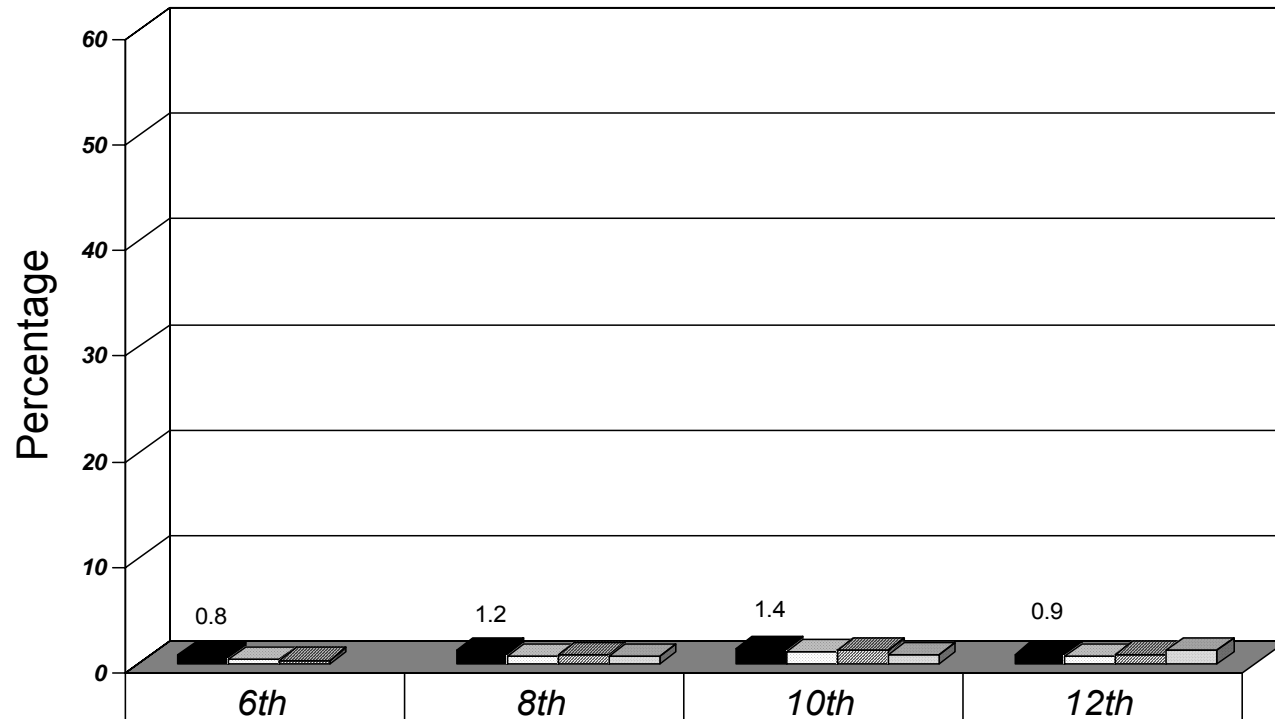
T/E Community	0.3	0.5	1.4	2.2
Chester County	0.1	0.5	0.9	0.7
Pennsylvania	0.0	0.5	0.7	0.9
MTF - National	No Data	1.2	1.4	1.7

Ecstasy – Past 30-Day Use – 2003



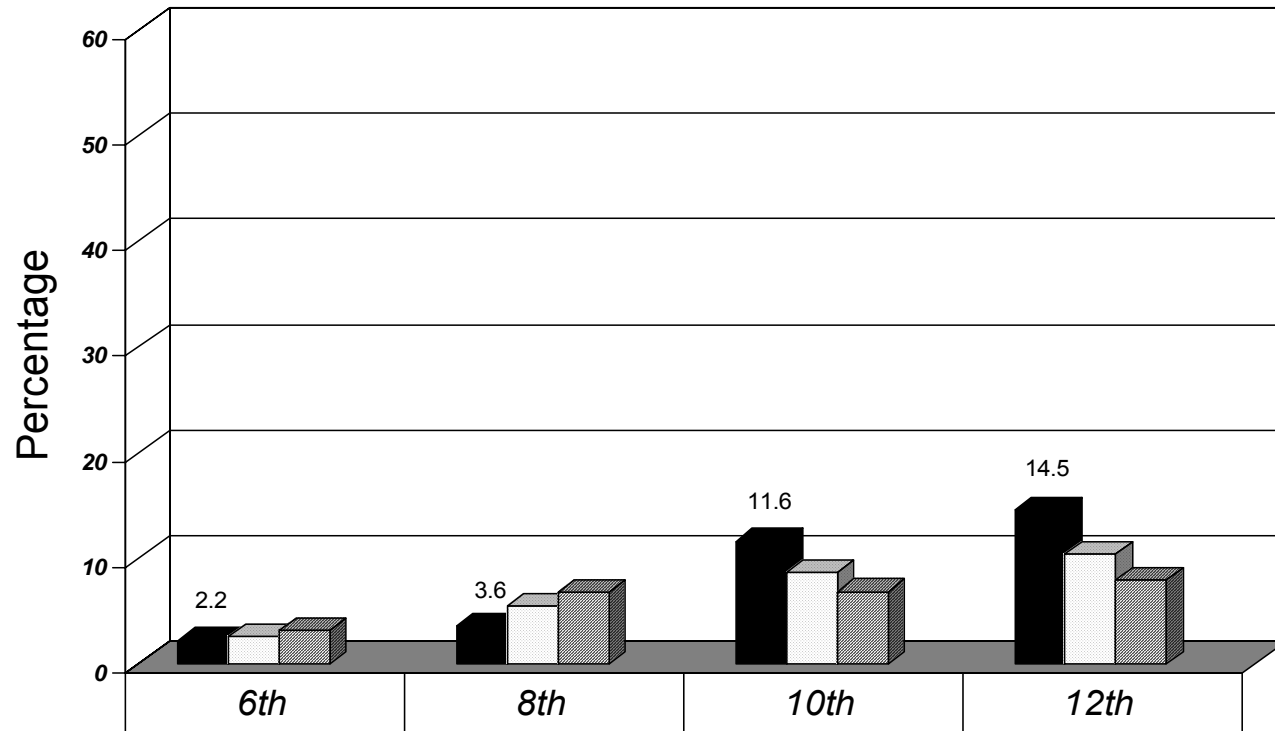
	6th	8th	10th	12th
T/E Community	0.5	0.5	3.3	3.7
Chester County	0.1	0.8	1.8	2.1
Pennsylvania	0.0	0.9	1.3	1.5
MTF - National	No Data	0.7	1.1	1.3

Steroids – Past 30-Day Use – 2003



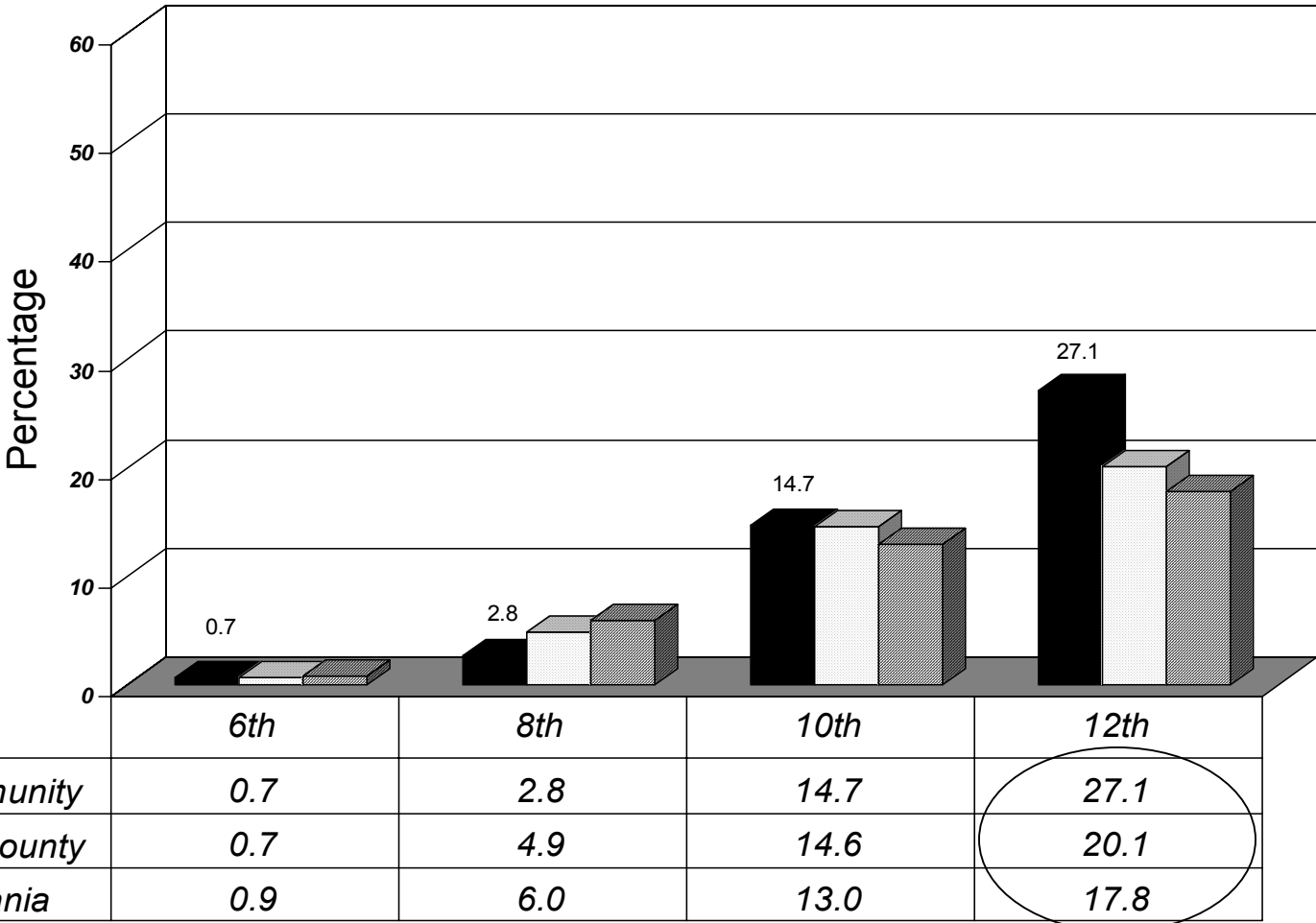
	6th	8th	10th	12th
■ <i>T/E Community</i>	0.8	1.2	1.4	0.9
□ <i>Chester County</i>	0.4	0.7	1.1	0.7
▨ <i>Pennsylvania</i>	0.3	0.8	1.2	0.9
▤ <i>MTF - National</i>	No Data	0.7	0.8	1.3

Any Illicit Drug (Other Than Marijuana) – Past 30-Day Use – 2003

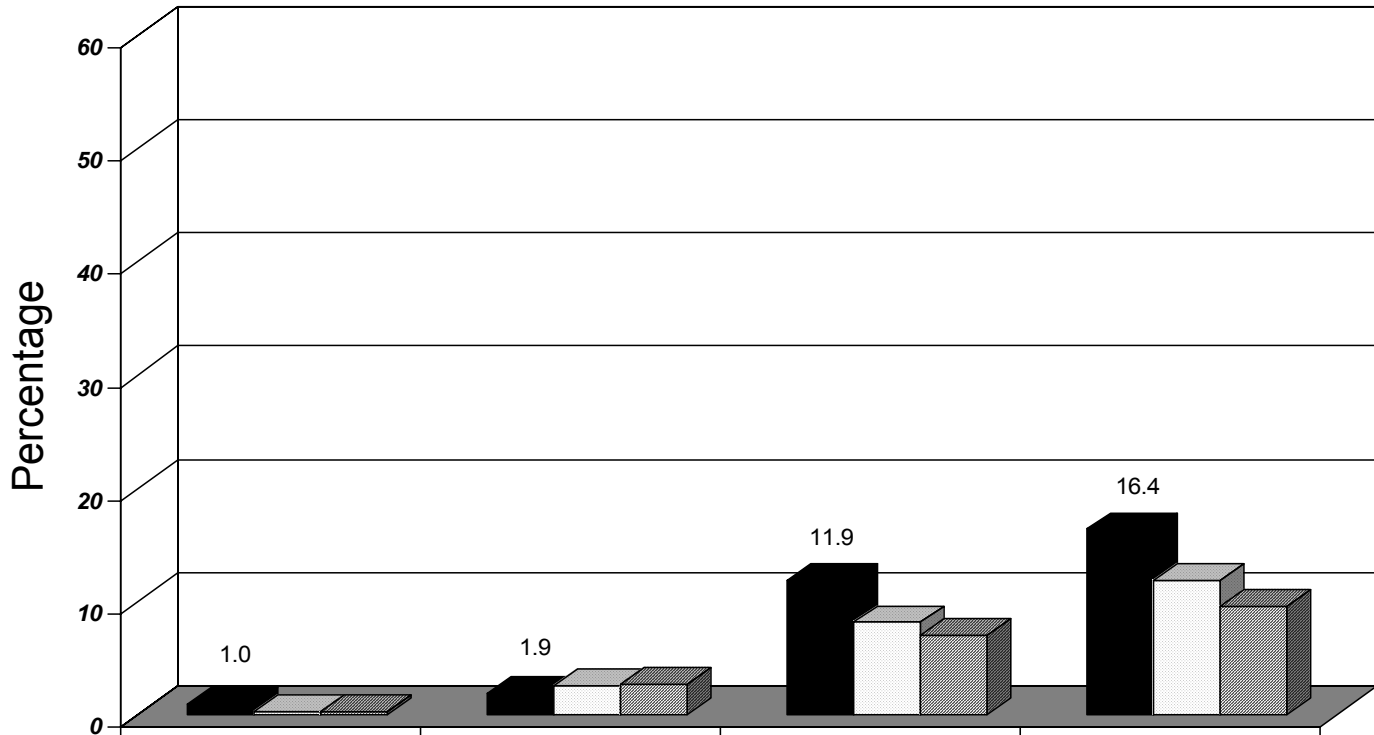


■ <i>T/E Community</i>	2.2	3.6	11.6	14.5
□ <i>Chester County</i>	2.5	5.4	8.6	10.4
▨ <i>Pennsylvania</i>	3.1	6.7	6.8	7.9
■ <i>MTF - National</i>	No Data	No Data	No Data	No Data

Being Drunk or High at School – Past 12 Months – 2003



Selling Drugs – Past 12 Months – 2003



	<i>6th</i>	<i>8th</i>	<i>10th</i>	<i>12th</i>
■ <i>T/E Community</i>	1.0	1.9	11.9	16.4
□ <i>Chester County</i>	0.3	2.6	8.2	11.9
▨ <i>Pennsylvania</i>	0.3	2.8	7.1	9.6

T/E Community Results

Spring 1998

*Primary Prevention Awareness, Attitude
and Use Survey (PPAAUS)*

vs.

Fall 2001

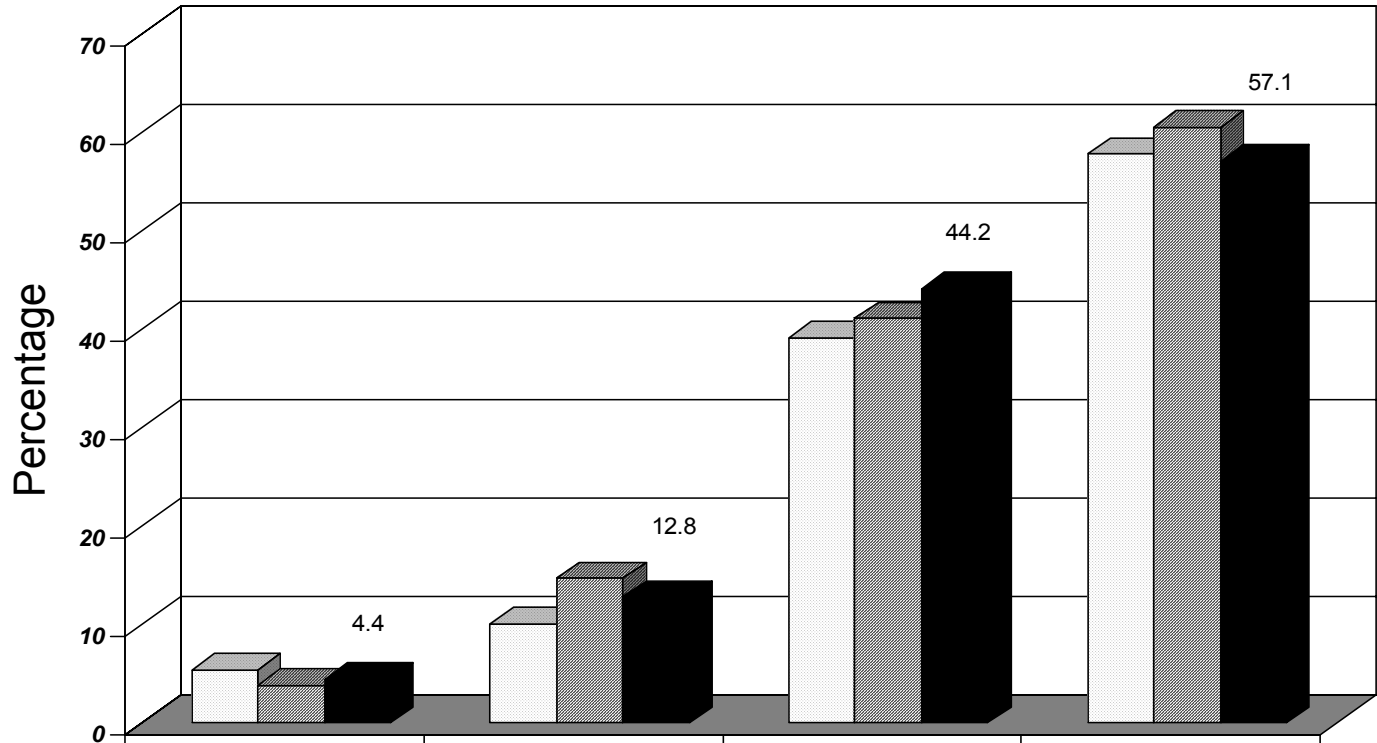
Pennsylvania Youth Survey

vs.

Fall 2003

Pennsylvania Youth Survey

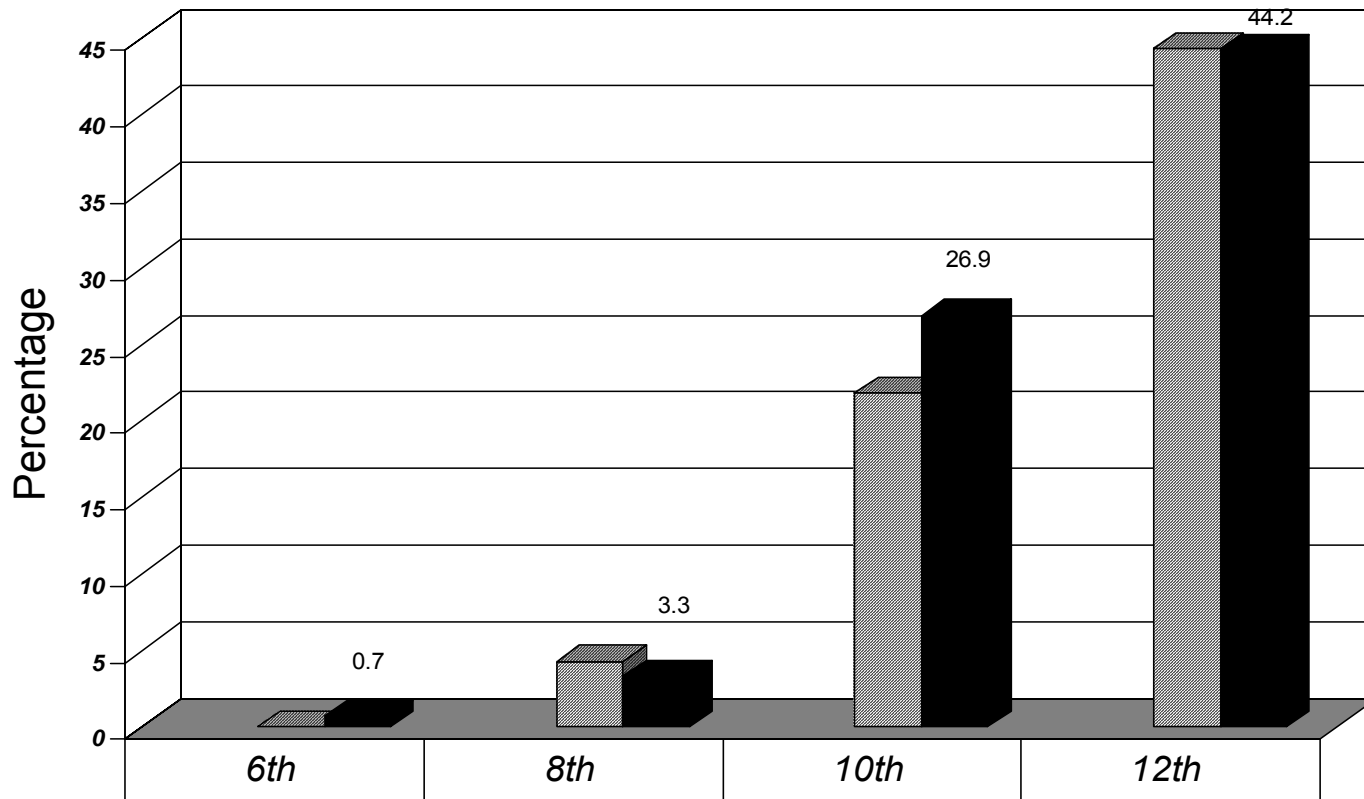
T/E Community 1998, 2001, 2003 – Alcohol Past 30-Day Use



	6th	8th	10th	12th
□ T/E Community - 1998	5.4	10.1	39.1	57.8
■ T/E Community - 2001	3.8	14.7	41.1	60.6
■ T/E Community - 2003	4.4	12.8	44.2	57.1

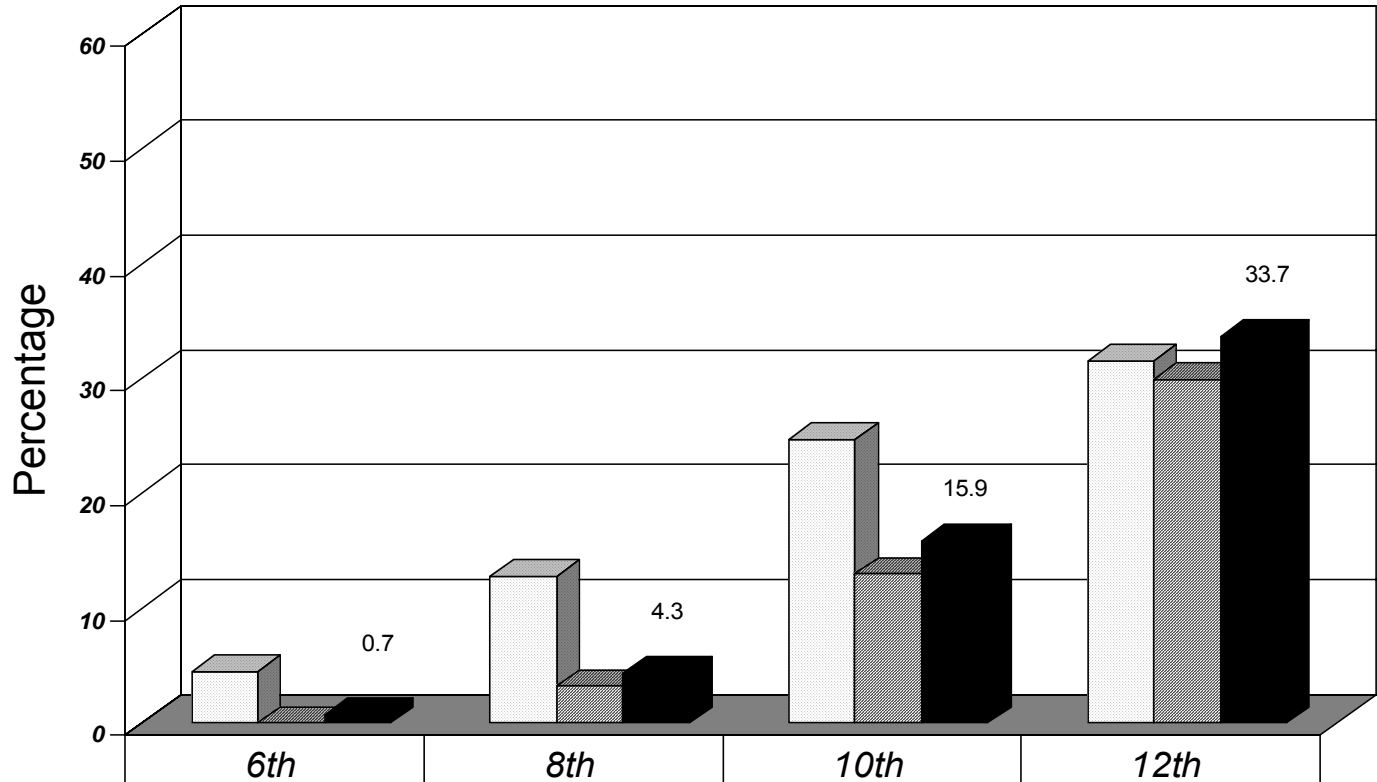
T/E Community 1998, 2001, 2003 – Binge Drinking

(Five or More Drinks in a Row in the Past Two Weeks)



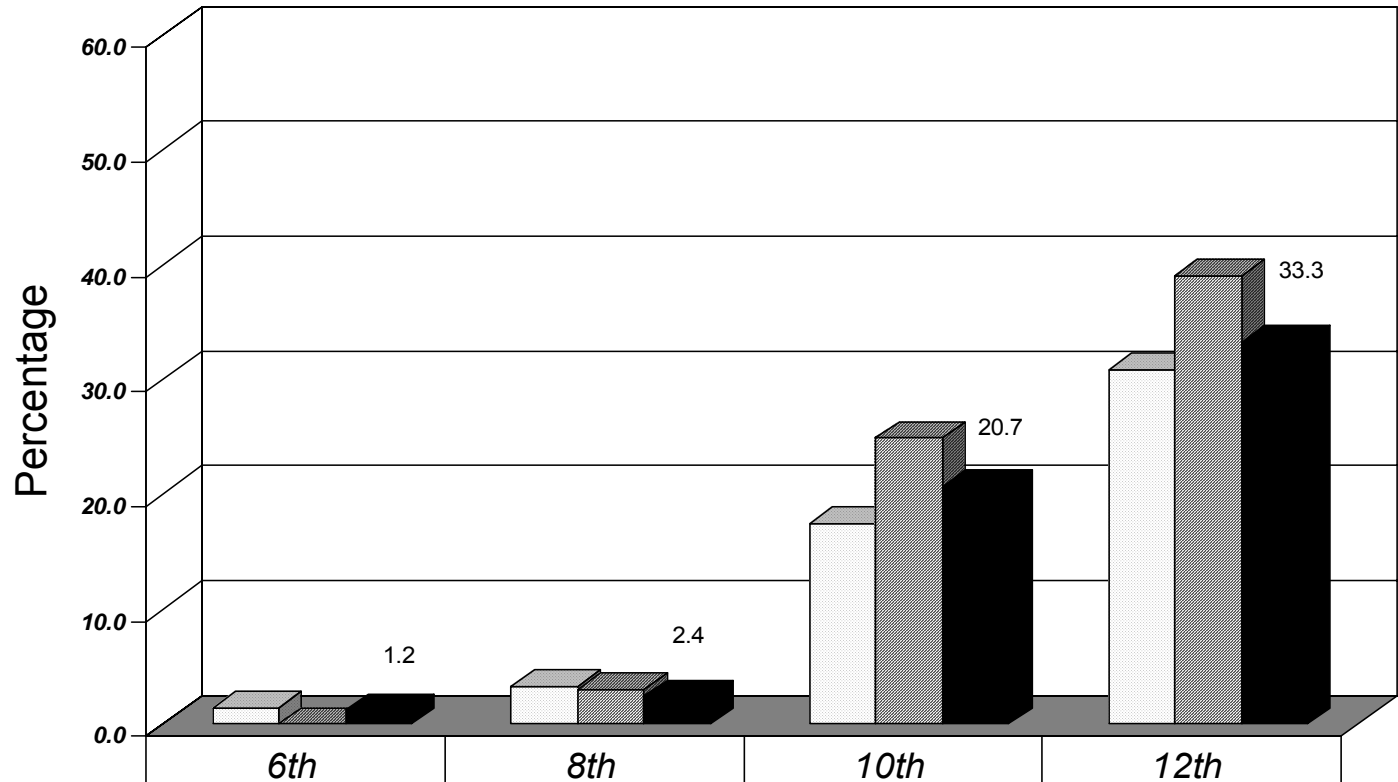
□ T/E Community - 1998	No Data	No Data	No Data	No Data
▨ T/E Community - 2001	0.0	4.3	21.8	44.3
■ T/E Community - 2003	0.7	3.3	26.9	44.2

T/E Community 1998, 2001, 2003 – Cigarettes Past 30-Day Use



□ T/E Community - 1998	4.5	12.8	24.7	31.5
▨ T/E Community - 2001	0.0	3.2	13.0	29.9
■ T/E Community - 2003	0.7	4.3	15.9	33.7

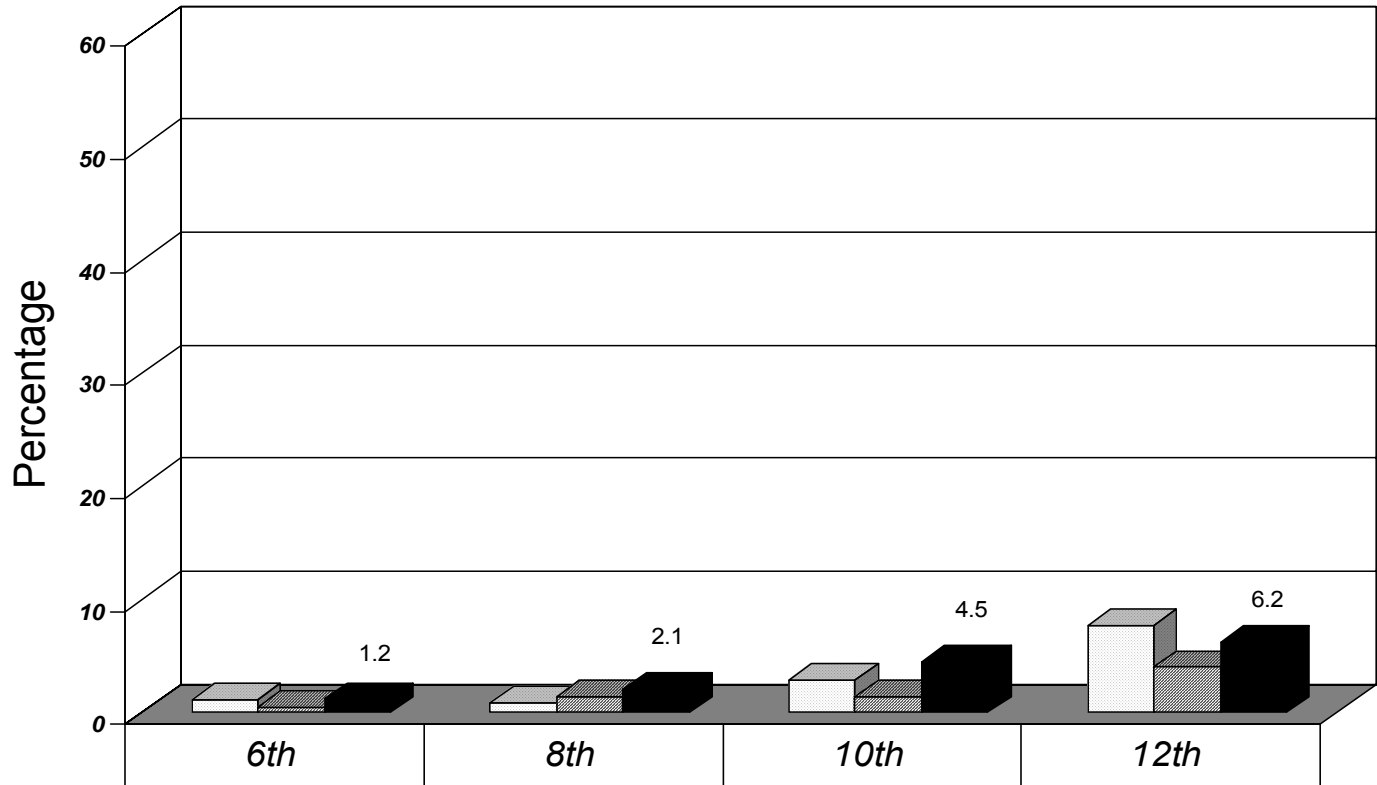
T/E Community 1998, 2001, 2003 – Marijuana Past 30-Day Use



□ T/E Community - 1998	1.4	3.3	17.5	30.9
▒ T/E Community - 2001	0.0	3.0	24.9	39.0
■ T/E Community - 2003	1.2	2.4	20.7	33.3

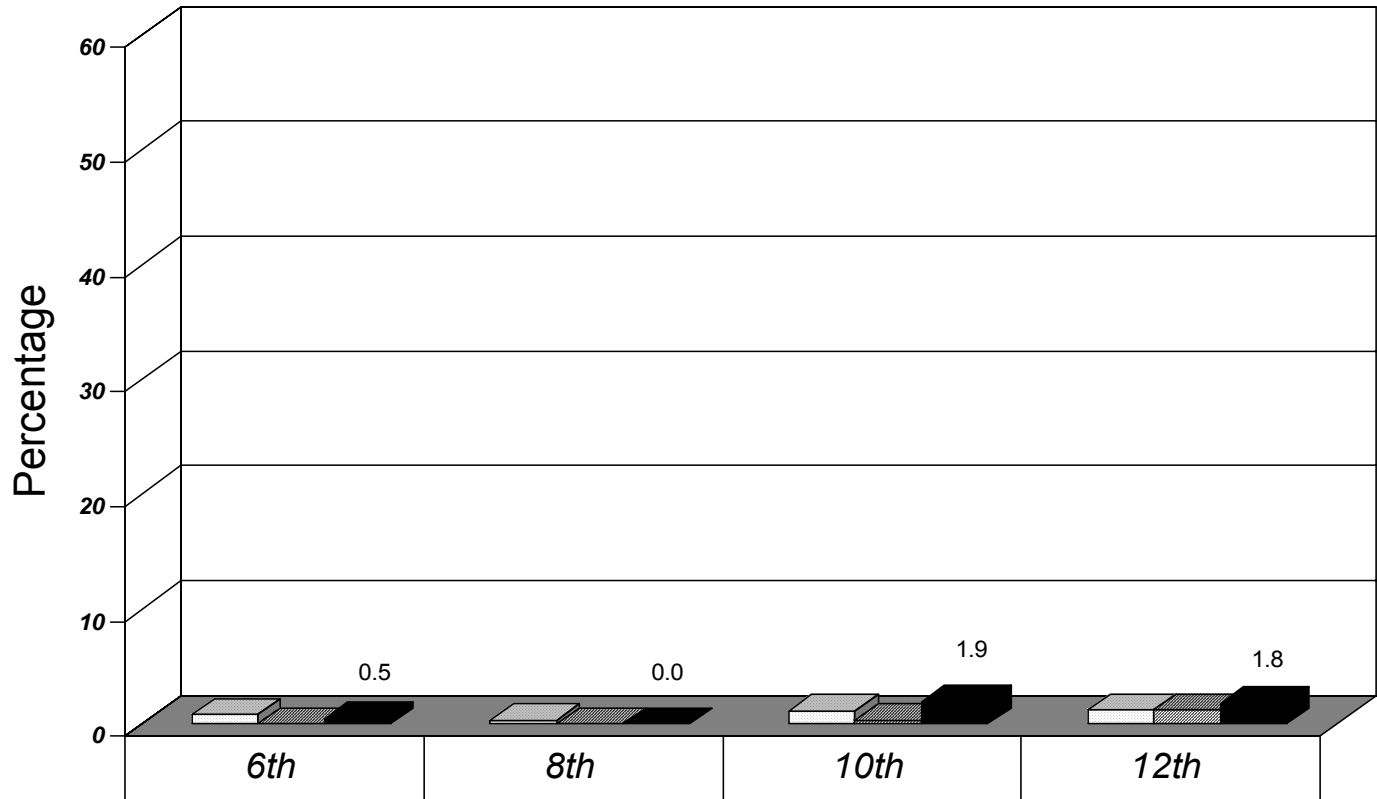


T/E Community 1998, 2001, 2003 – Inhalants Past 30-Day Use



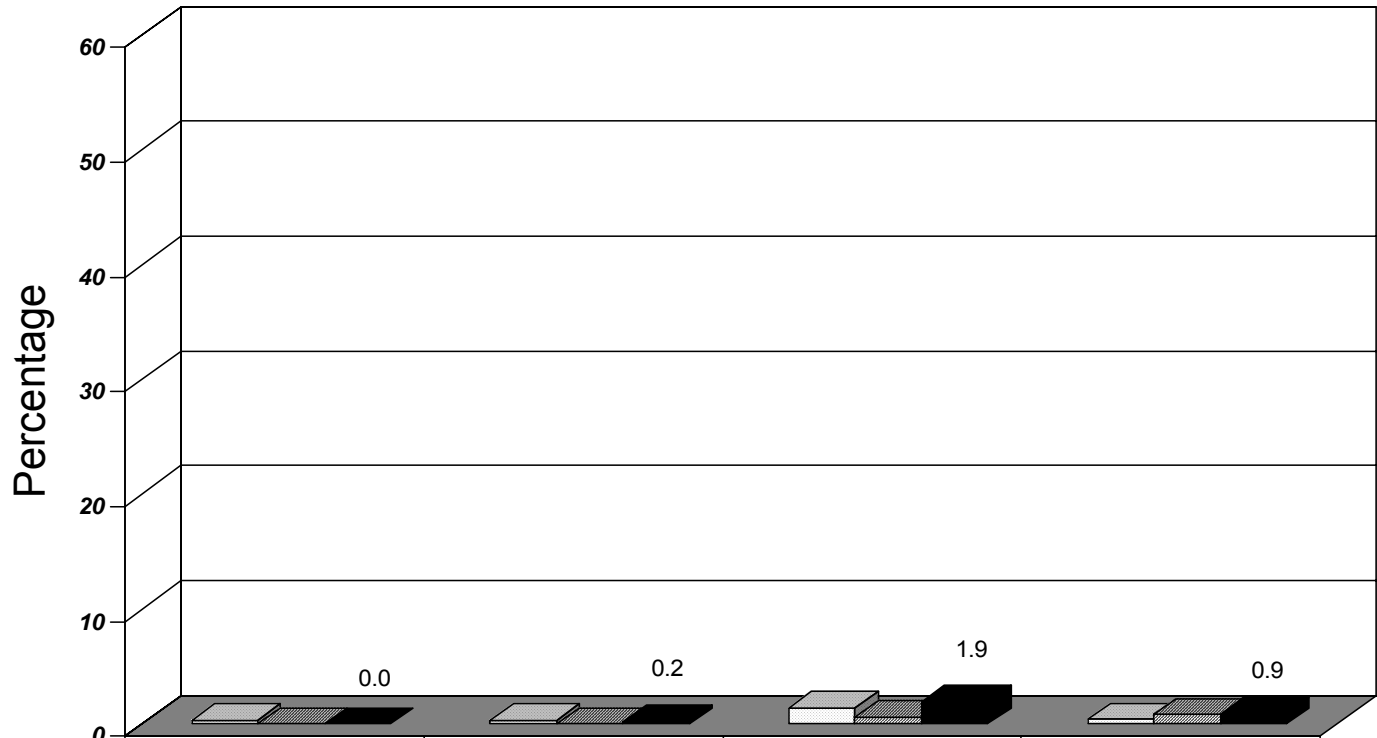
	<i>6th</i>	<i>8th</i>	<i>10th</i>	<i>12th</i>
□ <i>T/E Community - 1998</i>	1.1	0.9	2.9	7.7
▨ <i>T/E Community - 2001</i>	0.5	1.4	1.4	4.0
■ <i>T/E Community - 2003</i>	1.2	2.1	4.5	6.2

T/E Community 1998, 2001, 2003 – Cocaine Past 30-Day Use



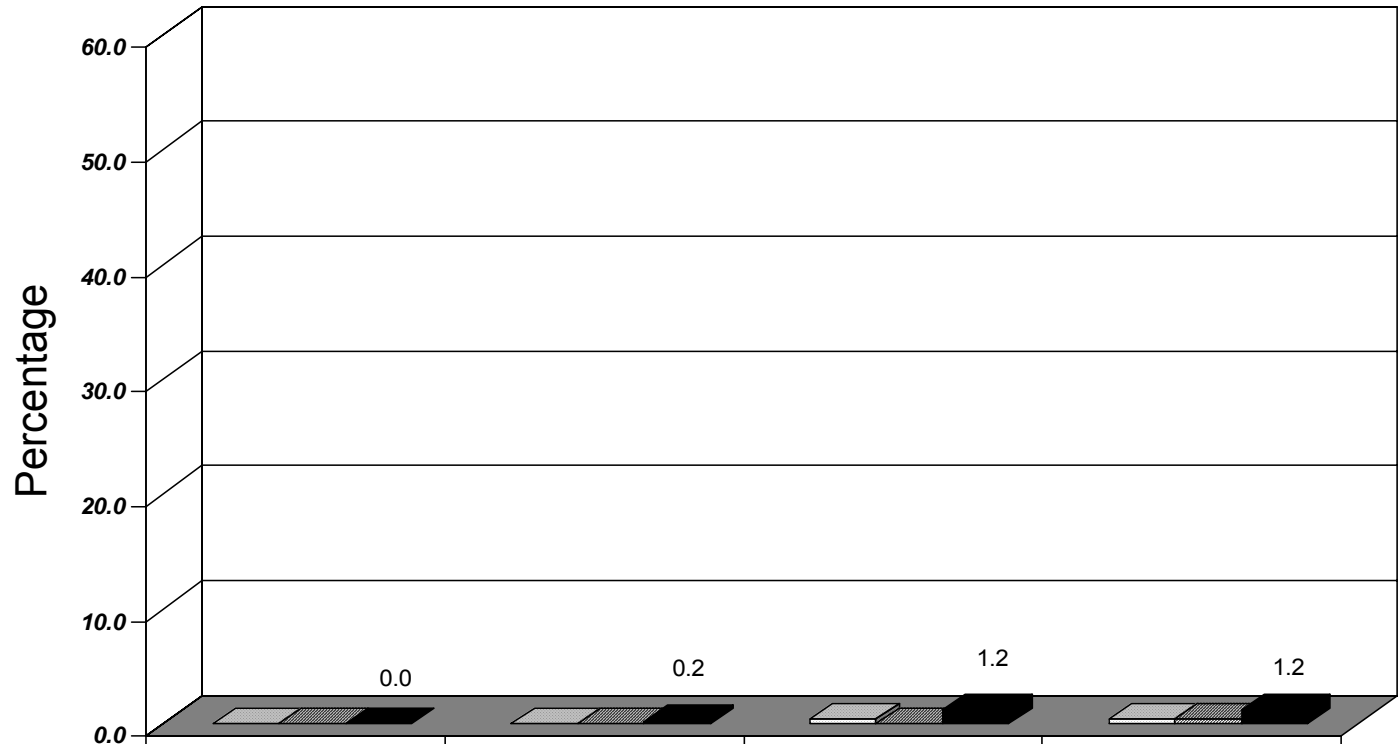
□ T/E Community - 1998	0.8	0.3	1.1	1.2
▨ T/E Community - 2001	0.0	0.0	0.3	1.2
■ T/E Community - 2003	0.5	0.0	1.9	1.8

T/E Community 1998, 2001, 2003 – Crack Cocaine Past 30-Day Use



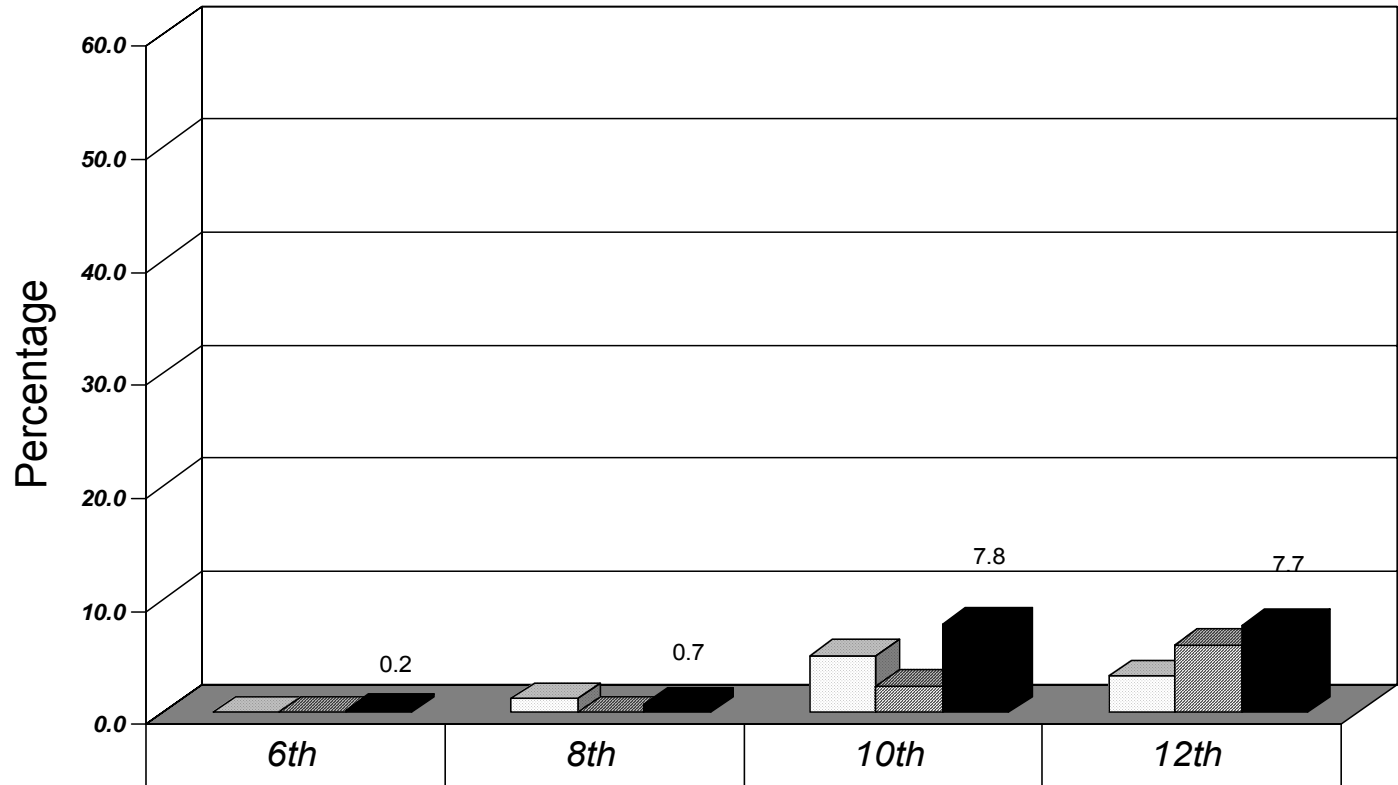
	<i>6th</i>	<i>8th</i>	<i>10th</i>	<i>12th</i>
□ <i>T/E Community - 1998</i>	0.3	0.3	1.4	0.4
▨ <i>T/E Community - 2001</i>	0.0	0.0	0.6	0.8
■ <i>T/E Community - 2003</i>	0.0	0.2	1.9	0.9

T/E Community 1998, 2001, 2003 – Heroin Past 30-Day Use



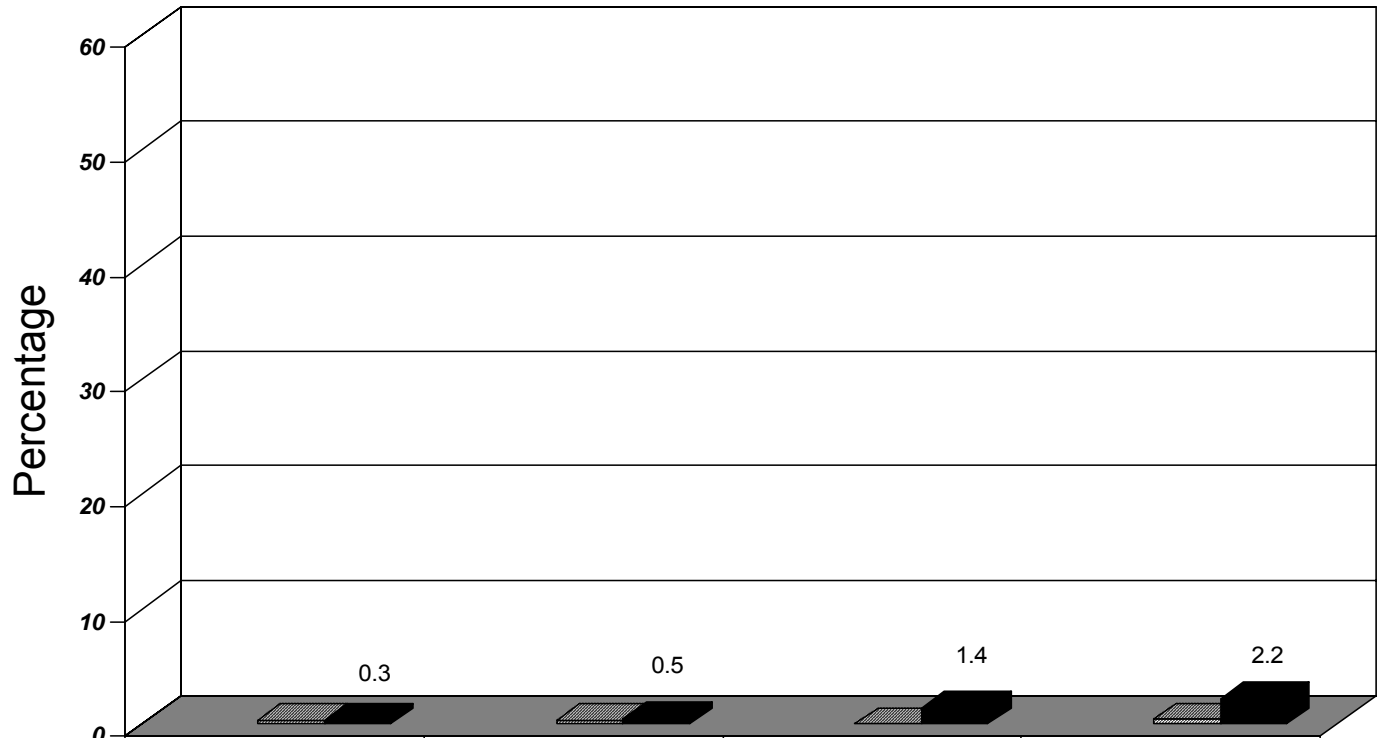
□ T/E Community - 1998	0.0	0.0	0.4	0.4
▨ T/E Community - 2001	0.0	0.0	0.0	0.4
■ T/E Community - 2003	0.0	0.2	1.2	1.2

T/E Community 1998, 2001, 2003 – Hallucinogens Past 30-Day Use



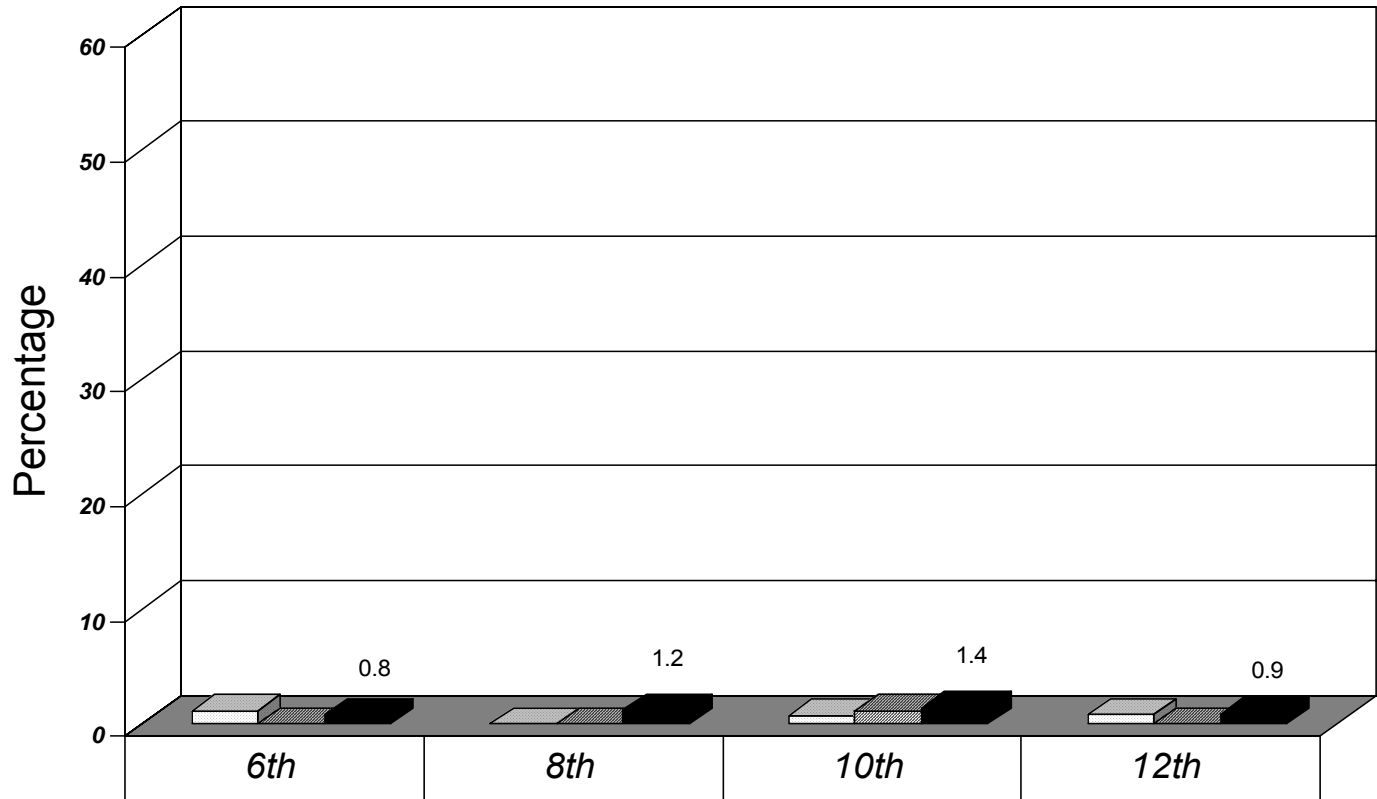
	6th	8th	10th	12th
□ T/E Community - 1998	0.0	1.2	5.0	3.2
▨ T/E Community - 2001	0.0	0.0	2.3	6.0
■ T/E Community - 2003	0.2	0.7	7.8	7.7

T/E Community 1998, 2001, 2003 – Methamphetamine Past 30-Day Use



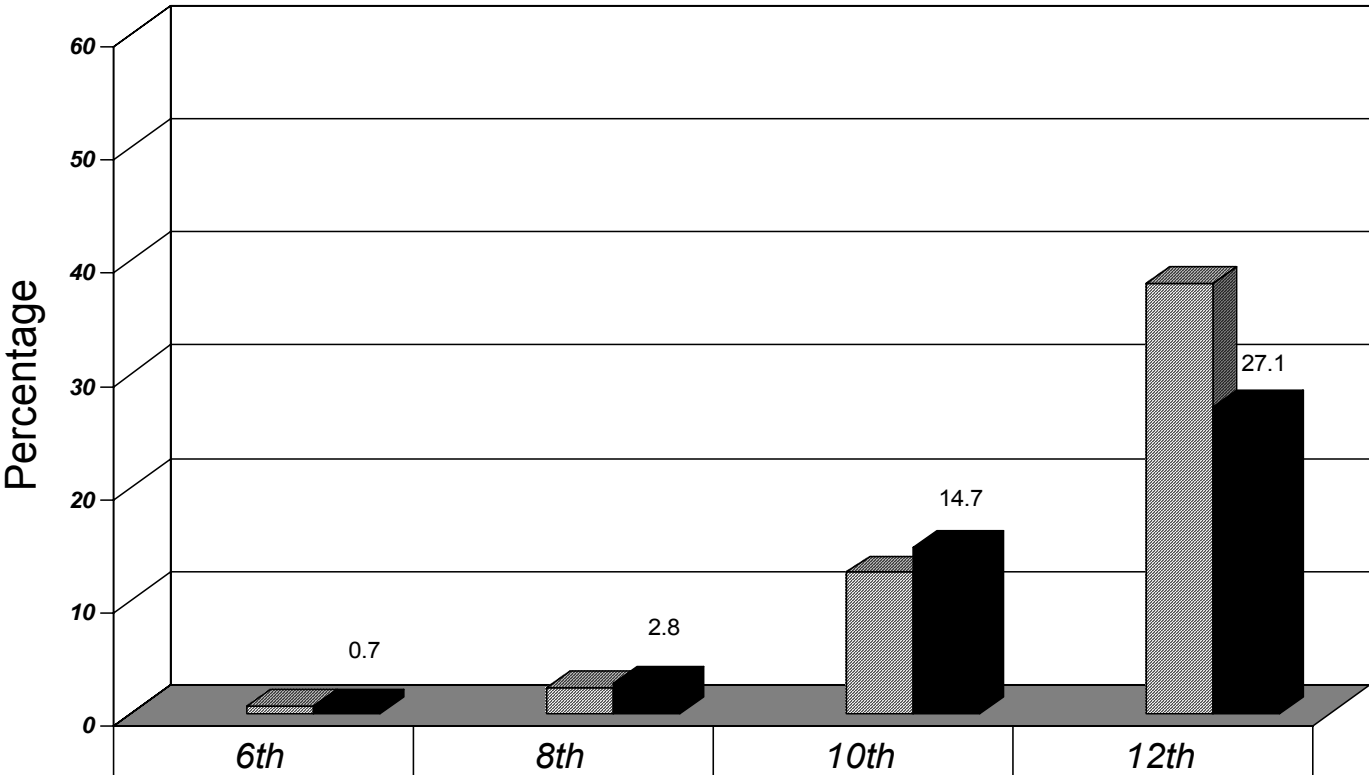
	6th	8th	10th	12th
□ T/E Community - 1998	No Data	No Data	No Data	No Data
▨ T/E Community - 2001	0.3	0.3	0.0	0.4
■ T/E Community - 2003	0.3	0.5	1.4	2.2

T/E Community 1998, 2001, 2003 – Steroids Past 30-Day Use



□ T/E Community - 1998	1.1	0.0	0.7	0.8
▨ T/E Community - 2001	0.0	0.0	1.1	0.0
■ T/E Community - 2003	0.8	1.2	1.4	0.9

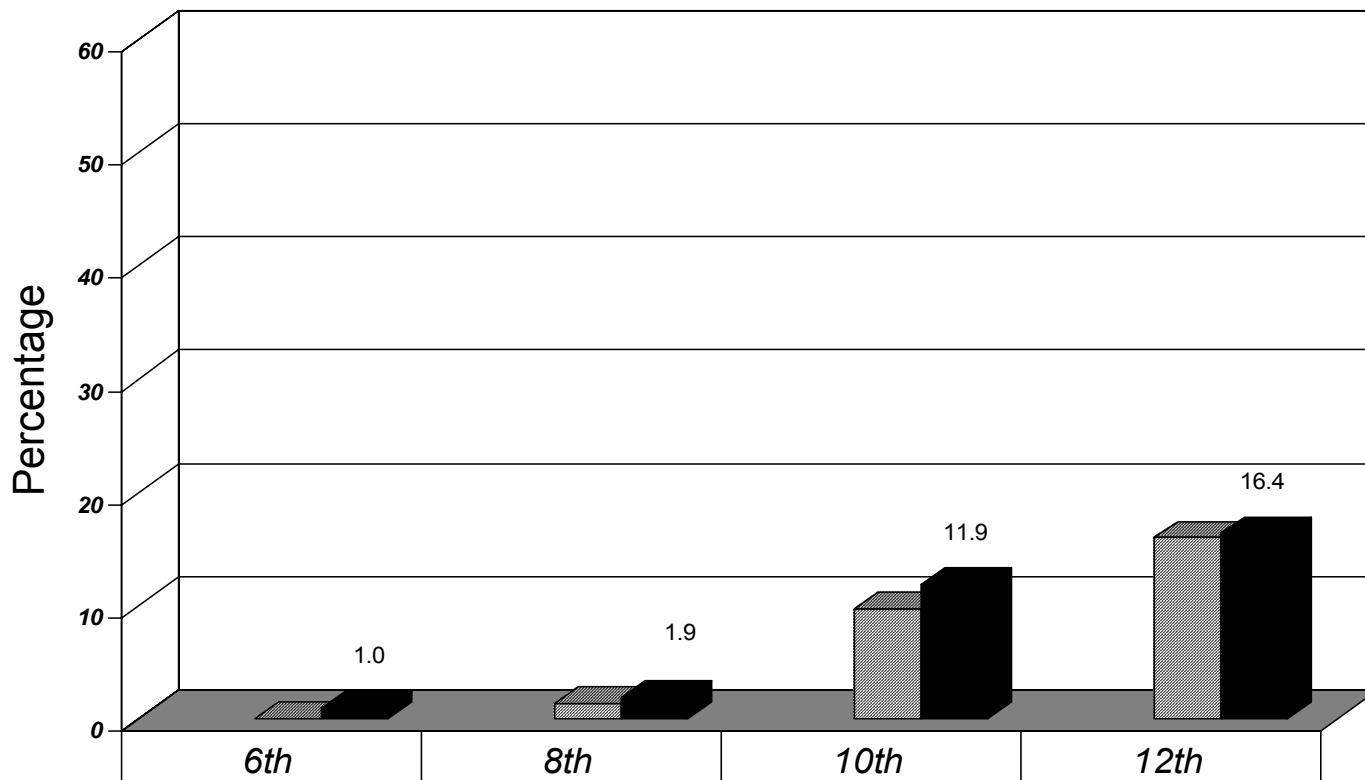
Being Drunk or High at School – Past 12 Months – 2001, 2003



□ T/E Community - 1998	No Data	No Data	No Data	No Data
▨ T/E Community - 2001	0.7	2.4	12.5	38.0
■ T/E Community - 2003	0.7	2.8	14.7	27.1



Selling Drugs – Past 12 Months – 2001, 2003



□ T/E Community - 1998	No Data	No Data	No Data	No Data
▨ T/E Community - 2001	0.0	1.4	9.7	16.0
■ T/E Community - 2003	1.0	1.9	11.9	16.4

Protective Factor Scale Scores - 2003

T/E Community vs. Chester County

Higher Scores are Preferable

PROTECTIVE FACTORS	GRADE						
	6 th	8 th	10 th	12 th	Overall	Change from 2001	County Overall
<i>Community Domain</i>							
Community Rewards for Prosocial Involvement	64	52	46	44	52	(-1)	48
<i>Family Domain</i>							
Family Attachment	--	--	--	--	--	--	56
Family Opportunities for Prosocial Involvement	--	--	--	--	--	--	56
Family Rewards for Prosocial Involvement	--	--	--	--	--	--	58
<i>School Domain</i>							
School Opportunities for Prosocial Involvement	67	65	64	65	65	(-1)	58
School Rewards for Prosocial Involvement	64	56	47	50	54	(-3)	49
<i>Individual/Peer Domain</i>							
Religiosity	61	58	53	48	55	(-2)	53
Social Skills	70	60	48	43	56	(-1)	56
Belief in the Moral Order	78	65	51	51	62	+5	60

Risk Factor Scale Scores - 2003

T/E Community vs. Chester County

Lower Scores are Preferable

RISK FACTORS	GRADE						
	6 th	8 th	10 th	12 th	Overall	Change from 2001	County Overall
<i>Community Domain</i>							
Low Neighborhood Attachment	32	41	47	52	43	+1	46
Community Disorganization	32	40	47	48	41	+7	46
Personal Transitions and Mobility	49	46	52	46	49	+9	54
Laws and Norms Favorable to Drug Use and Firearms	20	36	55	64	43	+3	46
Perceived Availability of Drugs and Firearms	14	26	47	55	34	+1	34
<i>Family Domain</i>							
Poor Family Supervision	--	--	--	--	--	--	45
Poor Family Discipline	--	--	--	--	--	--	42
Family History of Antisocial Behavior	--	--	--	--	--	--	37
Parental Attitudes Favorable toward ATOD Use	--	--	--	--	--	--	44
Parental Attitudes Favorable toward Antisocial Behavior	--	--	--	--	--	--	47

Risk Factor Scale Scores - 2003

T/E Community vs. Chester County

Lower Scores are Preferable (Continued)

RISK FACTORS	GRADE						
	6 th	8 th	10 th	12 th	Overall	Change from 2001	County Overall 2003
<i>School Domain</i>							
Poor Academic Performance	39	42	45	42	★42	(-1)	48
Low School Commitment	27	40	51	51	42	0	46
<i>Individual/Peer Domain</i>							
Rebelliousness	26	39	52	51	41	(-3)	42
Friends' Delinquent Behavior	35	39	47	51	43	+1	46
Friends' Use of Drugs	19	29	57	68	42	+2	41
Peer Rewards for Antisocial Behavior	29	44	67	68	51	+5	47
Favorable Attitudes toward Antisocial Behavior	29	43	54	55	45	(-5)	45
Favorable Attitudes toward ATOD Use	20	32	57	66	43	+3	40
Low Perceived Risks of Drug Use	19	24	41	48	32	(-1)	33
Early Initiation (of Drug Use & Antisocial Behavior)	21	31	44	48	★35	+1	36
Sensation Seeking	31	38	52	56	44	(-6)	43

Strengths to Build On

- Protective Factor scale scores (higher scores are preferable):
 - ✓ All over 60 points for 6th graders
 - ✓ All over 50 points for 8th graders
 - ✓ “School Opportunities for Prosocial Involvement” 64 points or higher for all surveyed grades
(*School Domain*)
 - ✓ “School Rewards for Prosocial Involvement” 50 points or higher for all surveyed grades
(*School Domain*)
 - ✓ “Belief in the Moral Order” 51 points or higher for all surveyed grades
(*Community Domain*)

Strengths to Build On

(Continued)

- Risk Factor scale scores (lower scores are preferable):
 - ✓ “Community Disorganization” 48 points or lower for all surveyed grades
(Community Domain)
 - ✓ “Poor Academic Performance” 45 points or lower for all surveyed grades
(School Domain)
 - ✓ “Early Initiation” 48 points or lower for all surveyed grades
(Individual/Peer Domain)

Opportunities for Improvement

- Protective Factor scale scores (higher scores are preferable):
 - ✓ “Community Rewards for Prosocial Involvement” reaches a low of 44 points for 12th graders
(Community Domain)
 - ✓ “Social Skills” reaches a low of 43 for 12th graders
(Individual/Peer Domain)

Opportunities for Improvement

(Continued)

- Risk Factor scale scores (lower scores are preferable):
 - ✓ “Laws and Norms Favorable to Drug Use and Firearms” reaches a high of 64 for 12th graders (begins with a low of 20 for 6th graders)
(Community Domain)
 - ✓ “Perceived Availability of Drugs and Firearms” climbs to a high of 55 points for 12th graders (begins with a low of 14 for 6th graders)
(Community Domain)
 - ✓ Scores over 50 points for 10th and 12th graders: “Laws and Norms Favorable to Drug Use and Firearms”; “Friends’ Use of Drugs”; “Peer Rewards for Antisocial Behavior”; “Favorable Attitudes Toward ATOD Use”
(Community Domain – first risk factor; Individual/Peer Domain – remaining risk factors)

“Parents are the single most important influence on children’s decision to smoke, drink or use drugs, yet many parents do not fully understand the extent of their influence.”

(Johnson & Johnson, 2000)

“Parent power is key to preventing and reducing substance use and abuse yet, too many parents neglect to exercise this power.”

(The National Center on Addiction and Substance Abuse at Columbia University [CASA],
September 2001)