

# Tredyffrin / Easttown Community

## *2007 PA Youth Survey: Overview of Key Results*

*November 10, 2008*

*Information compiled and presented by:  
Laura Heikkila*

## Why do we conduct a Pennsylvania Youth Survey (PAYS)?

- Provides an important benchmark for alcohol, tobacco, and other drug (ATOD) use and anti-social behavior among youth
- Assesses risk factors that are related to these behaviors and the protective factors that guard against them; information gained can be used to guide prevention efforts which helps address existing problems and promote healthy and positive youth development
- Occurs at the same time every two years throughout Chester County and the state and a similar survey occurs at the national level; allows for accurate comparison of results
- Occurs in the school setting to be able to capture the most responses, but is a community survey in that it measures information occurring in multiple areas of the young person's life

## Survey Facts and Methodology

- All twelve Chester County School Districts, plus both Center for Arts & Technology participated
- In Fall of 2007, students in grades 6, 8, 9 (T/E only), 10 and 12 were surveyed including:
  - 1,907 in the T/E Community (431 - 6<sup>th</sup>; 404 - 8<sup>th</sup>; 410 - 9<sup>th</sup>; 353 - 10<sup>th</sup>; 272 - 12<sup>th</sup>)
  - 16,305 in Chester County
- Survey takers were informed that participation is voluntary, surveys are anonymous and confidential, could skip any question they were uncomfortable answering and there are no right or wrong answers
- Four strategies were used to assess the validity of the surveys; the following would be excluded:
  - Youth who exaggerate their use of drugs
  - Youth who exaggerate the frequency of other antisocial behaviors
  - Reported use of a fictitious drug
  - Repeated logically inconsistent pattern of substance use

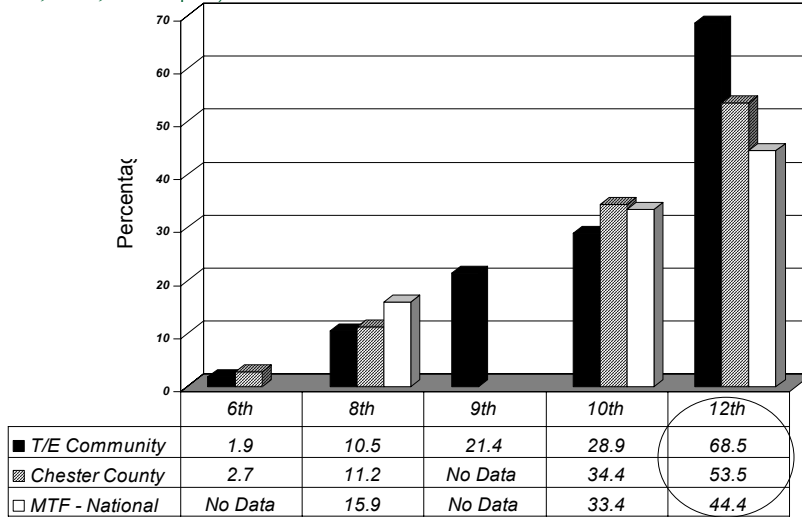
## Fall 2007

### *Pennsylvania Youth Survey (PAYS) Results*

- T/E Community
- Chester County
- Monitoring the Future (National)

## Alcohol – Past 30-Day Use – 2007

(Beer, wine, hard liquor)

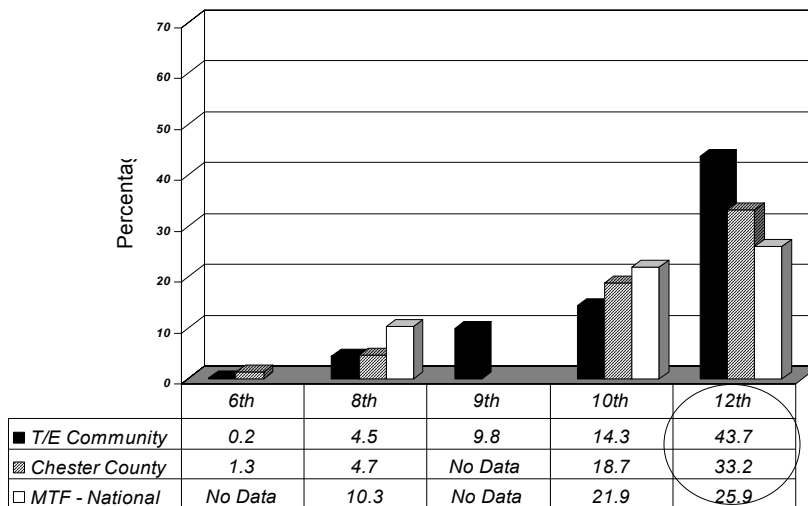


11/17/2008

5

## Binge Drinking – 2007

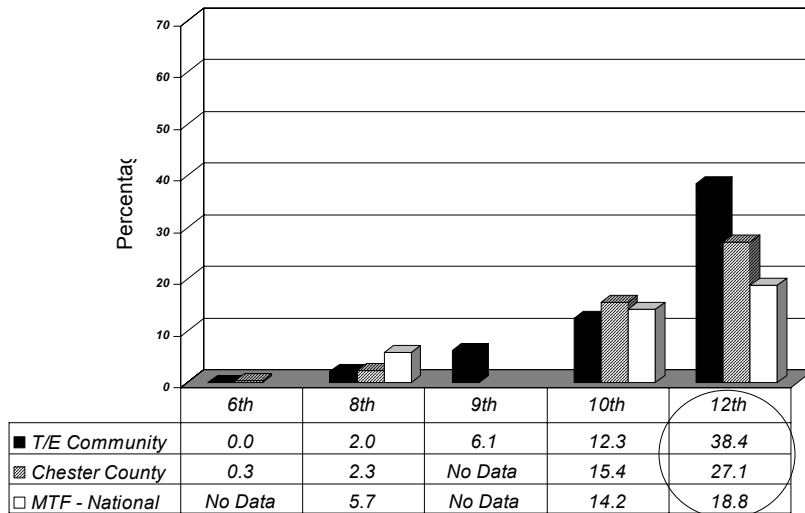
(Five or More Drinks in a Row in the Past Two Weeks)



11/17/2008

6

## Marijuana – Past 30-Day Use - 2007

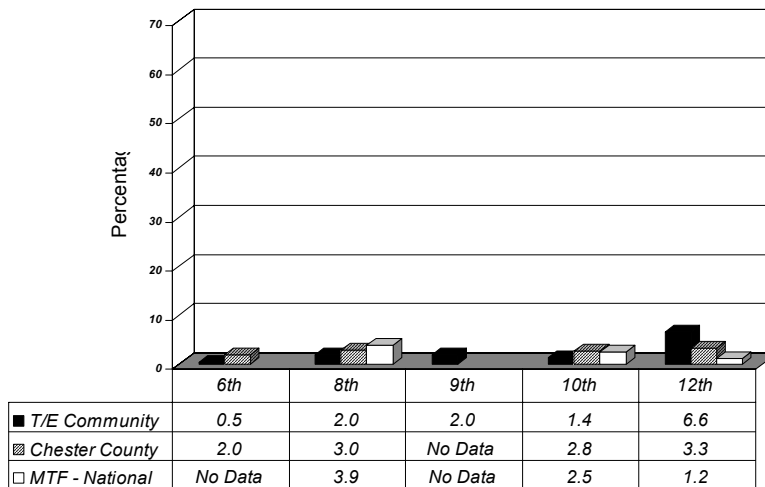


11/17/2008

7

## Inhalants – Past 30-Day Use – 2007

(Sniffed glue, breathed the contents of an aerosol spray can, or inhaled other gases or sprays in order to get high)

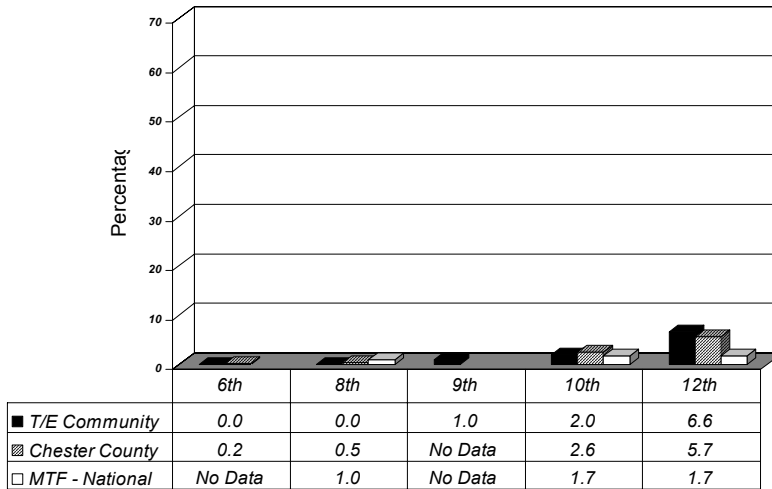


11/17/2008

8

## Hallucinogens – Past 30-Day Use – 2007

(Acid, LSD, 'shrooms)

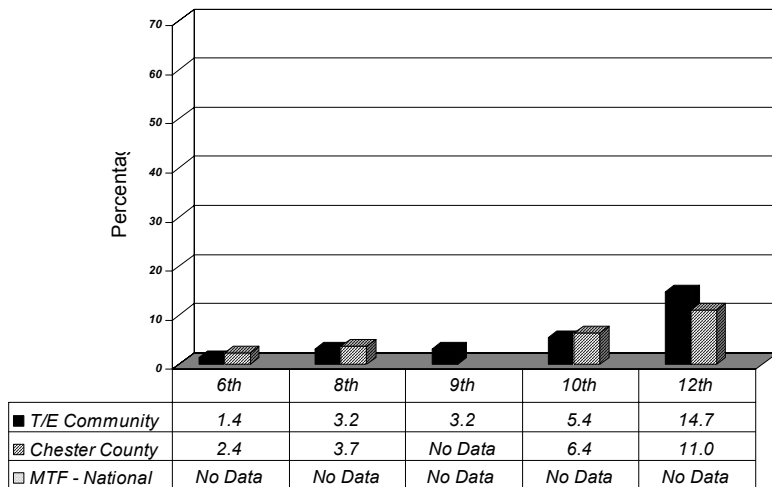


11/17/2008

9

## Any Illicit Drug (Other Than Marijuana) – Past 30-Day

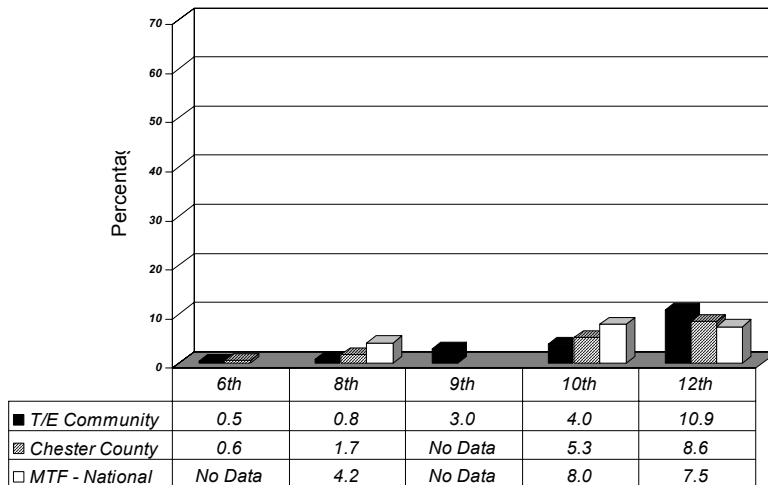
Use – 2007 (One or more of the following: inhalants, cocaine, crack cocaine, heroin, hallucinogens, methamphetamine, ecstasy and steroids)



11/17/2008

10

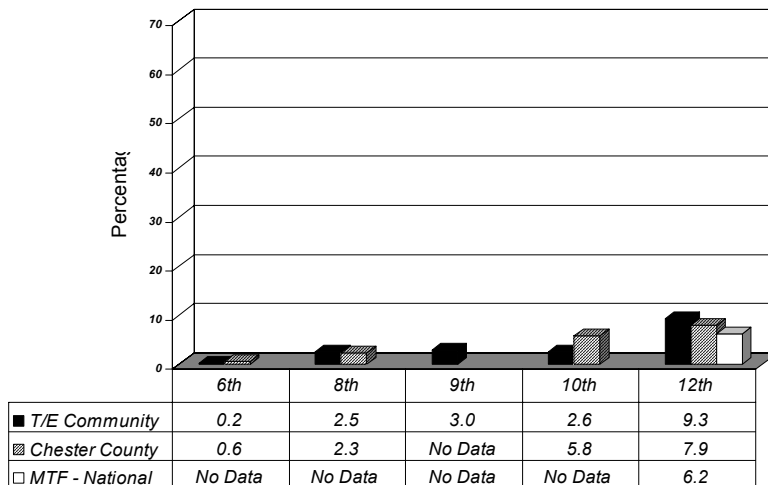
## Non-Medical Prescription Drug Use – Amphetamines (Past 12 Months) – 2007 (Uppers, ups, speed, bennies, dexies, pep pills and diet pills)



11/17/2008

11

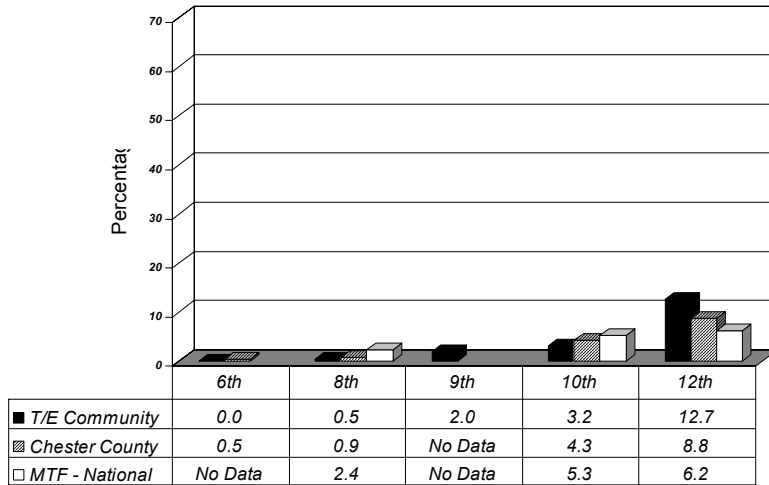
## Non-Medical Prescription Drug Use – Sedatives (Past 12 Months) – 2007 (Phenobarbital, Tuinal, Nembutal, Seconal or downs/downers)



11/17/2008

12

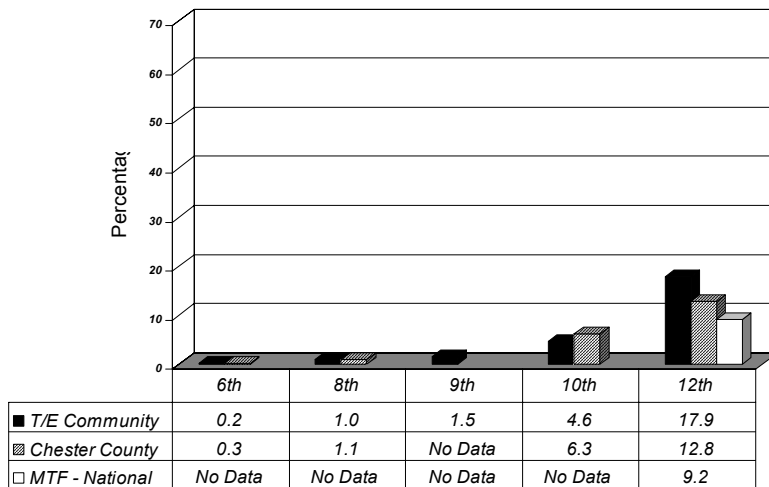
## Non-Medical Prescription Drug Use – Tranquilizers (Past 12 Months) – 2007 (Librium, Valium and Xanax)



11/17/2008

13

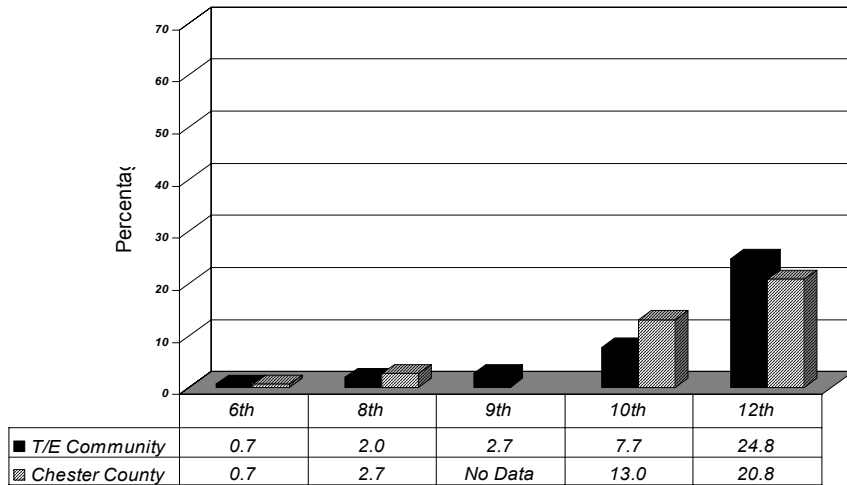
## Non-Medical Prescription Drug Use – Other Narcotics (Past 12 Months) – 2007 (Demerol, Vicodin, OxyContin, Percocet, methadone, opium, morphine and codeine)



11/17/2008

14

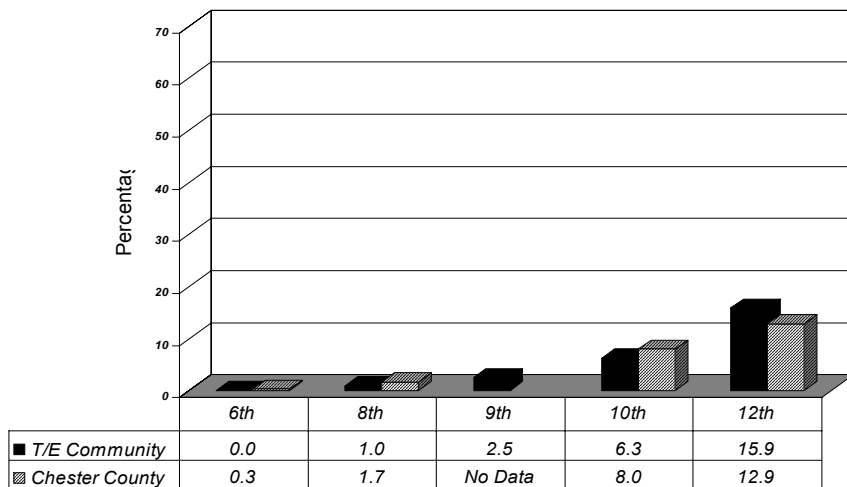
## Being Drunk or High at School (Past 12 Months) – 2007



11/17/2008

15

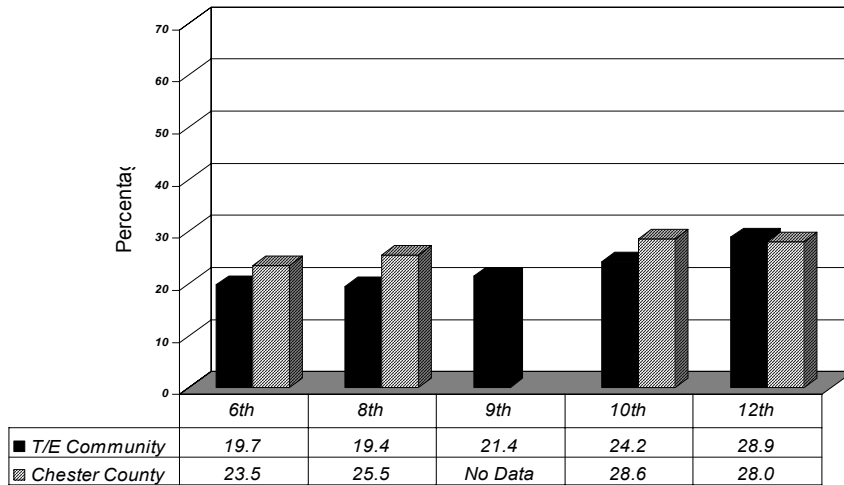
## Selling Drugs (Past 12 Months) – 2007



11/17/2008

16

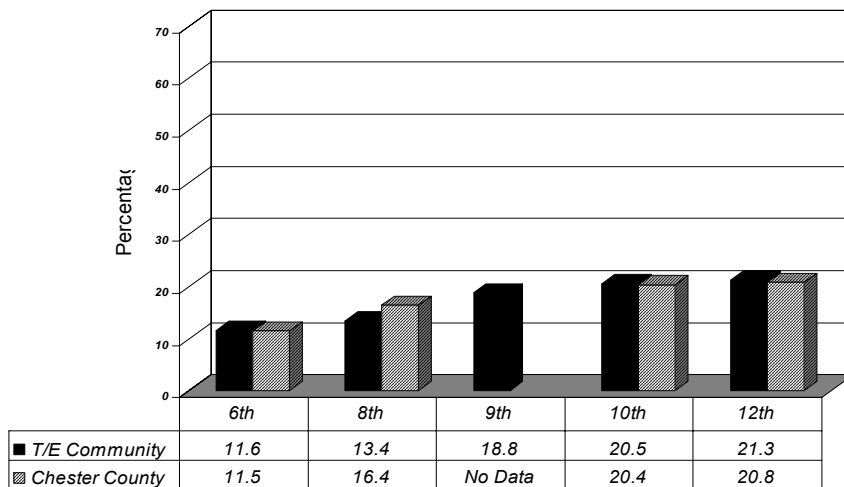
## Depression Questions: “In the past year, felt depressed or sad most days” – 2007



11/17/2008

17

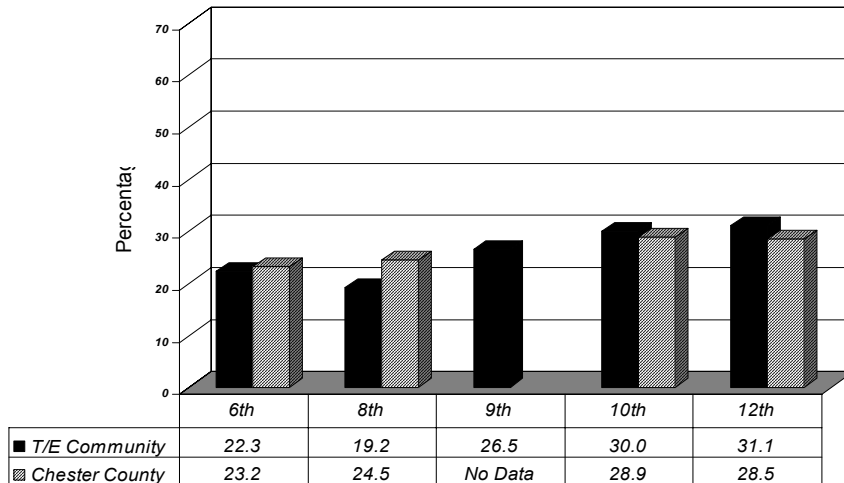
## Depression Questions: “Sometimes I think that life is not worth it” – 2007



11/17/2008

18

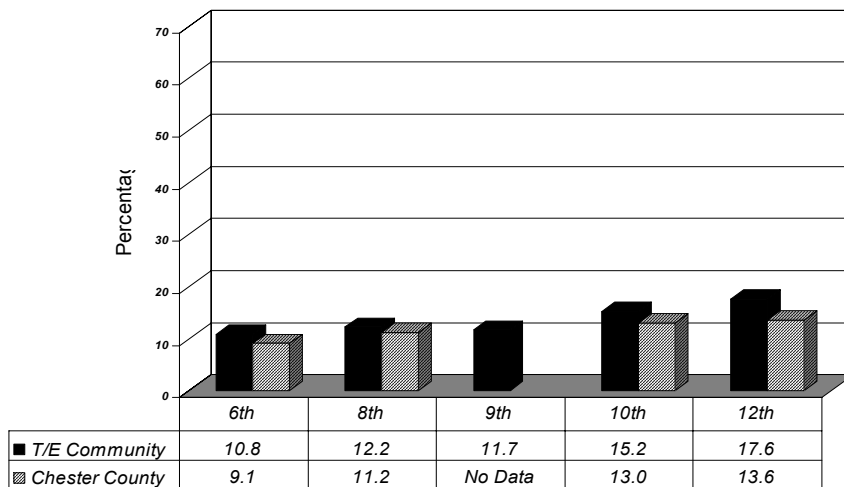
## Depression Questions: “At times I think I am no good at all” – 2007



11/17/2008

19

## Depression Questions: “All in all, I am inclined to think that I am a failure” – 2007



11/17/2008

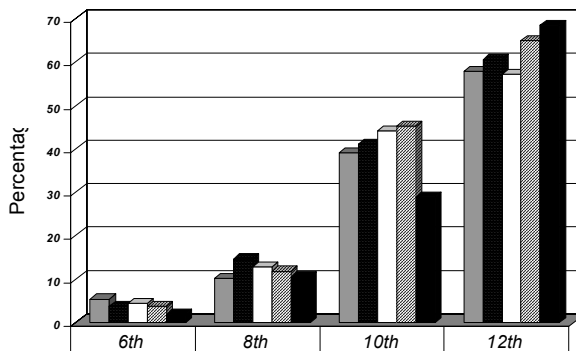
20

# T/E Community Results

## Trends in Data

- 1998
- 2001
- 2003
- 2005
- 2007

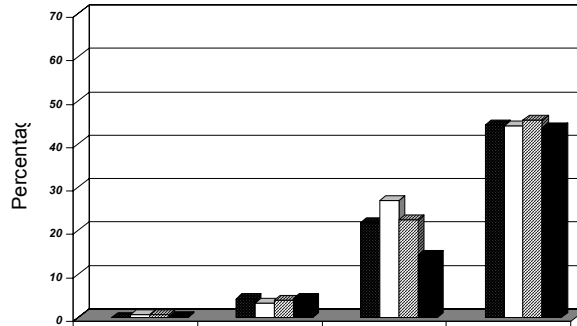
## T/E Community Trend – Alcohol Past 30-Day Use



	6th	8th	10th	12th
■ T/E Community - 1998	5.4	10.1	39.1	57.8
■ T/E Community - 2001	3.8	14.7	41.1	60.6
□ T/E Community - 2003	4.4	12.8	44.2	57.1
▨ T/E Community - 2005	3.8	11.8	45.2	64.9
■ T/E Community - 2007	1.9	10.5	28.9	68.5

## T/E Community Trend – Binge Drinking

(Five or More Drinks in a Row in the Past Two Weeks)

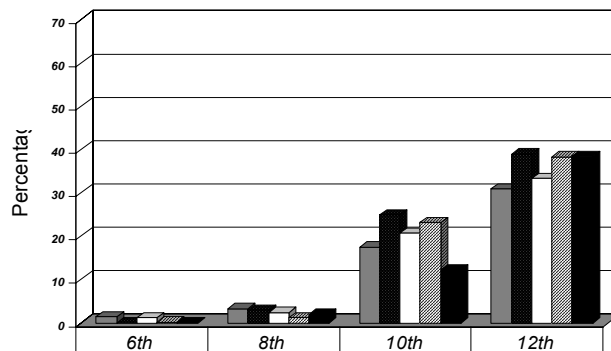


	6th	8th	10th	12th
□ T/E Community - 1998	No Data	No Data	No Data	No Data
■ T/E Community - 2001	0.0	4.3	21.8	44.3
□ T/E Community - 2003	0.7	3.3	26.9	44.2
▨ T/E Community - 2005	0.7	3.9	22.5	45.4
■ T/E Community - 2007	0.2	4.5	14.3	43.7

11/17/2008

23

## T/E Community Trend – Marijuana Past 30-Day Use

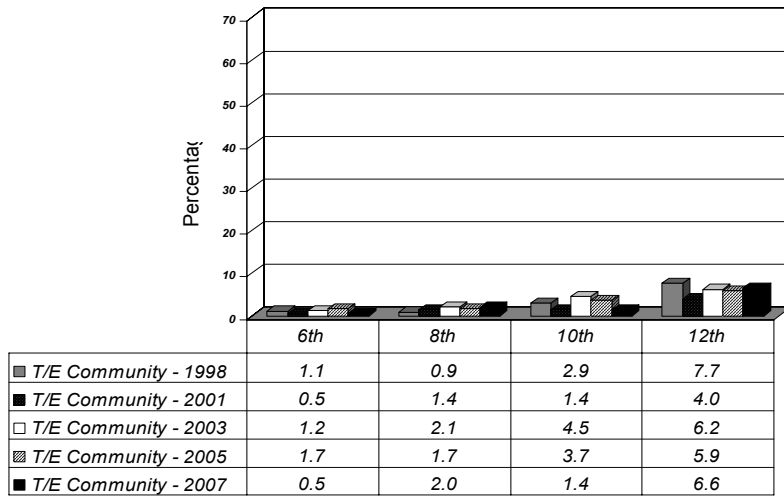


	6th	8th	10th	12th
■ T/E Community - 1998	1.4	3.3	17.5	30.9
■ T/E Community - 2001	0.0	3.0	24.9	39.0
□ T/E Community - 2003	1.2	2.4	20.7	33.3
▨ T/E Community - 2005	0.2	1.2	23.1	38.3
■ T/E Community - 2007	0.0	2.0	12.3	38.4

11/17/2008

24

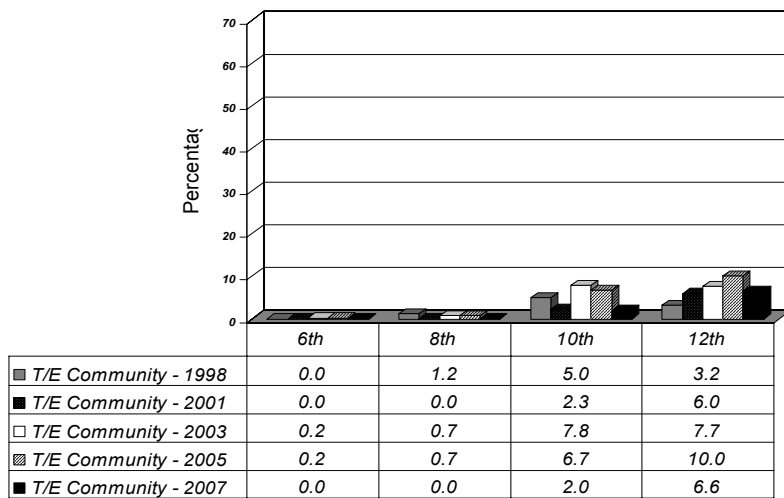
## T/E Community Trend – Inhalants Past 30-Day Use



11/17/2008

25

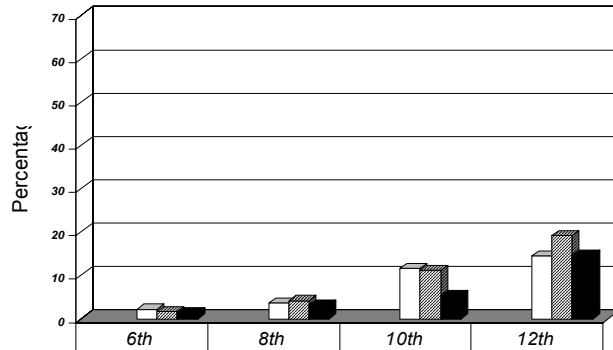
## T/E Community Trend – Hallucinogens Past 30-Day Use



11/17/2008

26

## T/E Community Trend – Any Illicit Drug (Other Than Marijuana) Past 30-Day Use

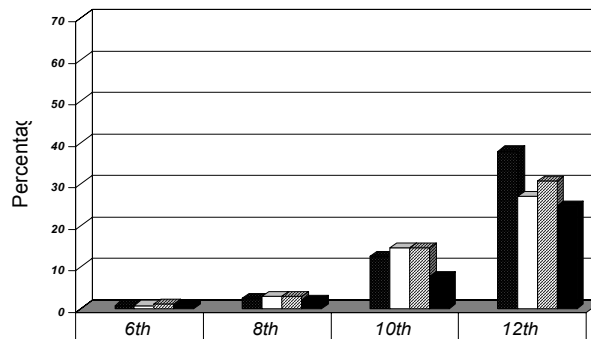


□ T/E Community - 1998	No Data	No Data	No Data	No Data
■ T/E Community - 2001	No Data	No Data	No Data	No Data
□ T/E Community - 2003	2.2	3.6	11.6	14.5
■ T/E Community - 2005	1.7	4.2	11.1	19.2
■ T/E Community - 2007	1.4	3.2	5.4	14.7

11/17/2008

27

## T/E Community Trend – Being Drunk or High at School (Past 12 Months)

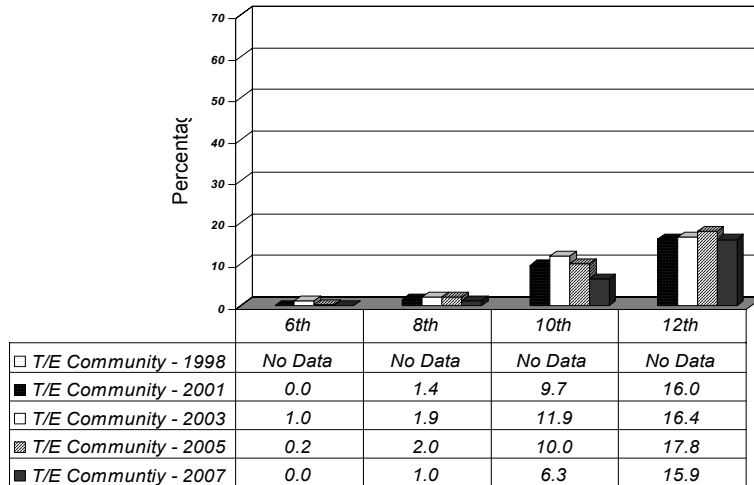


□ T/E Community - 1998	No Data	No Data	No Data	No Data
■ T/E Community - 2001	0.7	2.4	12.5	38.0
□ T/E Community - 2003	0.7	2.8	14.7	27.1
■ T/E Community - 2005	1.0	2.9	14.6	30.8
■ T/E Community - 2007	0.7	2.0	7.7 ☆	24.8 ☆

11/17/2008

28

## T/E Community Trend – Selling Drugs (Past 12 Months)



11/17/2008

29

## What are Risk Factors and Protective Factors?

### Protective Factors

- Those conditions that protect individuals from the negative consequences of exposure to risks by:
  - Reducing the impact of the risk
  - Changing the way a person responds to the risk

### Risk Factors

- Those conditions that increase the likelihood that an individual will engage in at-risk/problem behaviors

11/17/2008

30

## Facts about Risk and Protective Factors

- They exist in four domains:
  - Community
  - Family
  - School
  - Individual/Peer
- Risk and Protective factors exist within multiple domains
- *Perceived* risks can increase risk
- Risk and Protective factors are everyone's business

11/17/2008

31

### Protective Factor Scale Scores\* – T/E vs. County – 2007

PROTECTIVE FACTORS	GRADE						Overall 2007	Change from 2005	County Overall 2007
	6th	8th	9th	10th	12th				
<b>Community Domain</b>									
Community Opportunities for Prosocial Involvement	67	72 ☆	75 ☆	71	69 ☆	71 ☆	+ 5	63	
Community Rewards for Prosocial Involvement	60	60	61	58	56	59	+ 5	54	
<b>Family Domain</b>									
Family Attachment	61	62	59	55	53	58	+ 2	57	
Family Opportunities for Prosocial Involvement	58	59	59	57	56	58	+ 1	56	
Family Rewards for Prosocial Involvement	61	60	60	56	55	59	+ 2	57	
<b>School Domain</b>									
School Opportunities for Prosocial Involvement	56	63	71	74 ☆	69 ☆	66	+ 2	57	
School Rewards for Prosocial Involvement	54	63	68	67	66	63	0	55	
<b>Individual/Peer Domain</b>									
Religiosity	49	49	52	48	46	49	- 3	46	
Belief in the Moral Order	68 ☆	70	70	68	56	67	+ 5	63	

11/17/2008

\* Please Note: Higher Scores are Preferable

32

## Risk Factor Scale Scores\* – T/E vs. County – 2007 (Slide 1 of 2)

RISK FACTORS	GRADE					Overall 2007	Change from 2005	County Overall 2007
	6th	8th	9th	10th	12th			
<b>Community Domain</b>								
Low Neighborhood Attachment	31	32	32	33	35	33	- 1	41
Community Disorganization	29 ☆	28 ☆	28 ☆	33	36	30 ☆	- 2	39
Transitions and Mobility	38	45	58	48	48	47	+ 4	49
Laws and Norms Favorable to Drug Use	36	32	34	38	46	37	- 4	42
Laws and Norms Favorable to Handguns	33	32	30	32	33	32	- 1	41
Perceived Availability of Drugs	38	37	38	39	52	40	- 6	41
Perceived Availability of Handguns	37	38	35	32	31 ☆	35	0	41
<b>Family Domain</b>								
Poor Family Management	40	35	37	39	47	39	- 1	42
Family Conflict	43	46	48	52	50	48	0	48
Family History of Antisocial Behavior	30	33	32	33	41	33	- 4	38
Parental Attitudes Favorable toward ATOD Use	40	41	40	42	51	43	- 6	45
Parental Attitudes Favorable toward Antisocial Behavior	39	40	43	44	51	43	- 2	46

11/17/2008

\* Please Note: Lower Scores are Preferable

33

## Risk Factor Scale Scores\* – T/E vs. County – 2007 (Slide 2 of 2)

RISK FACTORS	GRADE					Overall 2007	Change from 2005	County Overall 2007
	6th	8th	9th	10th	12th			
<b>School Domain</b>								
Poor Academic Performance	38	36	34	35	38	36	0	40
Low School Commitment	42	42	34	35	38	38	- 1	43
<b>Individual/Peer Domain</b>								
Rebelliousness	32	35	40	44	51	40	- 4	43
Friends' Delinquent Behavior	36	36	34	37	45	37	- 3	43
Friends' Use of Drugs	37	32	32	38	56	38	- 7	41
Peer Rewards for Antisocial Behavior	39	42	50	57	73	51	- 7	52
Favorable Attitudes toward Antisocial Behavior	32	32	36	35	44	35	- 5	38
Favorable Attitudes toward ATOD Use	36	33	34	39	57	39	- 10	40
Low Perceived Risks of Drug Use	36	34	35	39	54	38	- 6	43
Early Initiation of Drug Use	33	30	30	31 ☆	47	33	- 5	36
Sensation Seeking	37	37	38	37	46	39	- 3	39

11/17/2008

\* Please Note: Lower Scores are Preferable

34

## Strengths to Build On

- 10<sup>th</sup> grade ATOD use in 2007 vs. 2005
- 89% of 8<sup>th</sup> graders had not used alcohol in the past 30 days
- 71% of 10<sup>th</sup> graders had not used alcohol in the past 30 days
- 98% of 8<sup>th</sup> graders had not used marijuana in the past 30 days
- 88% of 10<sup>th</sup> graders had not used marijuana in the past 30 days
- All but one overall protective factor score over 50 and all overall risk factor scores under 50
- Highest overall scores in the following protective factor scales: Community Opportunities for Prosocial Involvement (71), Belief in the Moral Order (67), and School Opportunities for Prosocial Involvement (66)
- Increasing/consistent scores in 8 out of 9 overall protective factor scores
- Decreasing/consistent scores in 22 out of 23 overall risk factor scores
- “Community Opportunities for Prosocial Involvement” at 67 points or higher for all surveyed grades

## Opportunities for Improvement

- 12<sup>th</sup> grade “Past 30-Day Alcohol Use” and “Binge Drinking” rates
- 12<sup>th</sup> grade “Past 30-Day Marijuana Use”
- Lowest overall score for the protective factor scales: Religiosity (49) – high of 52 in 9<sup>th</sup> grade and low of 46 in 12<sup>th</sup> grade
- Highest overall score for the risk factor scales: Peer Rewards for Antisocial Behavior (51) – low of 39 in 6<sup>th</sup> grade and high of 73 in 12<sup>th</sup> grade

---

## What can I do?

- Increase the level of “protective factors” in your child’s life
- Focus on your sphere of influence in your child’s life (especially within the family domain)
- Exercise your positive power as a parent