



Tredyffrin/Easttown Community

Overview of 2005 PA Youth Survey Results

November 6, 2006



Goals of PA Youth Survey

- Provide a benchmark for alcohol, tobacco and other drug use and delinquent behavior
- Provide data to drive intervention programs

Participants

- All 12 Chester County School Districts, plus 2 Centers for Arts & Technology participated
- In the Fall of 2005, youth in grades 6, 8, 10 and 12 were surveyed, including:
 - 1,642 in the T/E community
 - 15,530 in Chester County
 - Over 100,000 In Pennsylvania



PA Youth Survey Methodology

- Survey is administered in a classroom setting
- Participation is voluntary, anonymous and confidential
- Four strategies were used to ensure validity and surveys were excluded if
 - Youth exaggerated their drug use
 - Youth exaggerated frequency of antisocial behavior
 - Youth reported use of fictitious drug
 - Youth reported logically inconsistent substance use



Additional Indicators of Survey Validity

- Results have been consistent over time
- Results are similar to districts with similar demographics
- In longitudinal studies, participants confirm their earlier responses



PA Youth Survey: New This Year

- Depression questions added
- Prescription drug questions added
- T/E chose to add family domain questions



Risk Factors

- Conditions that increase the likelihood of a young person becoming involved in at-risk behavior
- Ex: Parental attitudes favorable toward alcohol, tobacco and drug use



Protective Factors

- Conditions that buffer youth from exposure to risk by either:
 - Reducing the impact of the risk
 - Changing the way young people respond to risk
- Ex: Belief in the Moral Order



Risk and Protective Factor Domains

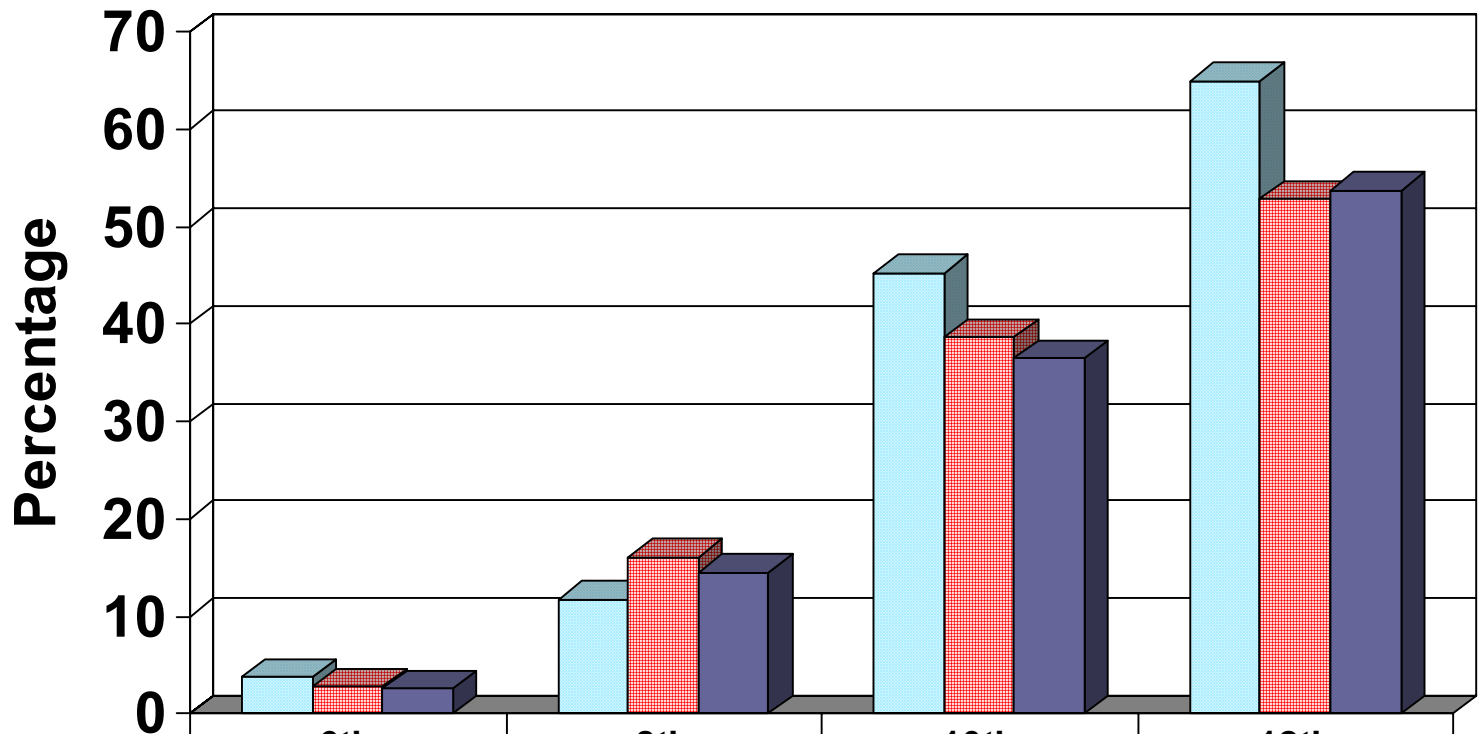
- Community
- Family
- School
- Individual and Peer


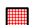



Alcohol, Tobacco and Other Drugs: Notable Results

- Alcohol continues to be the primary substance of abuse among our youth
- Binge drinking continues to be a concern among older youth
- Cigarette use continues to decline in all grades
- 12th graders in T/E reported 30-day recreational use of prescription drugs at rates higher than those of 12th graders statewide

Alcohol: Past 30-Day Use



 T/E Community	3.8	11.8	45.2	64.9
 Chester County	2.8	16.1	38.6	52.8
 Pennsylvania	2.6	14.5	36.5	53.7

88% of 8th graders surveyed had not used alcohol in the past 30 days.

55% of 10th graders surveyed had not used alcohol in the past 30 days.

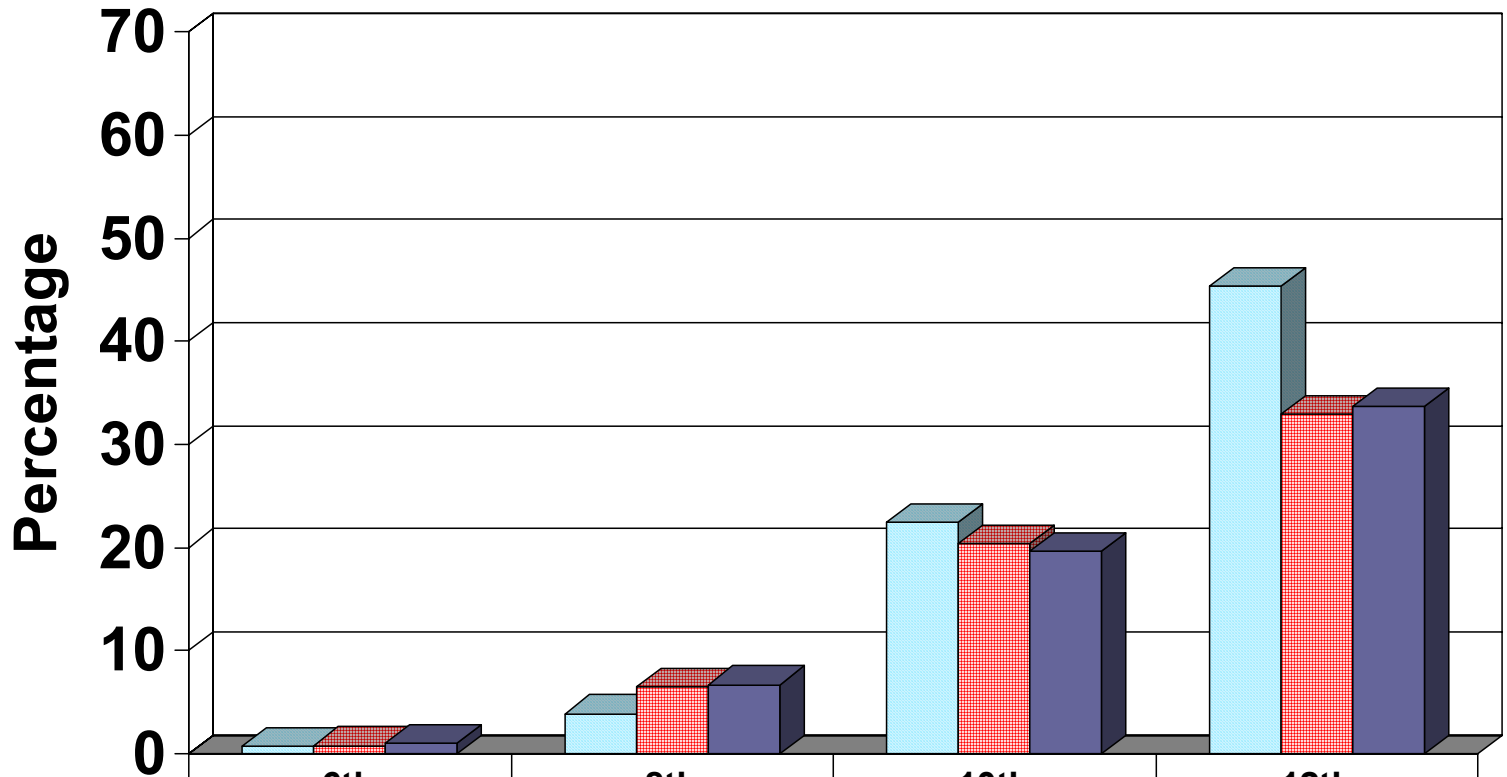







Binge Drinking

Binge drinking is defined as consuming five or more drinks in a row.

Binge Drinking: Past 2 Weeks



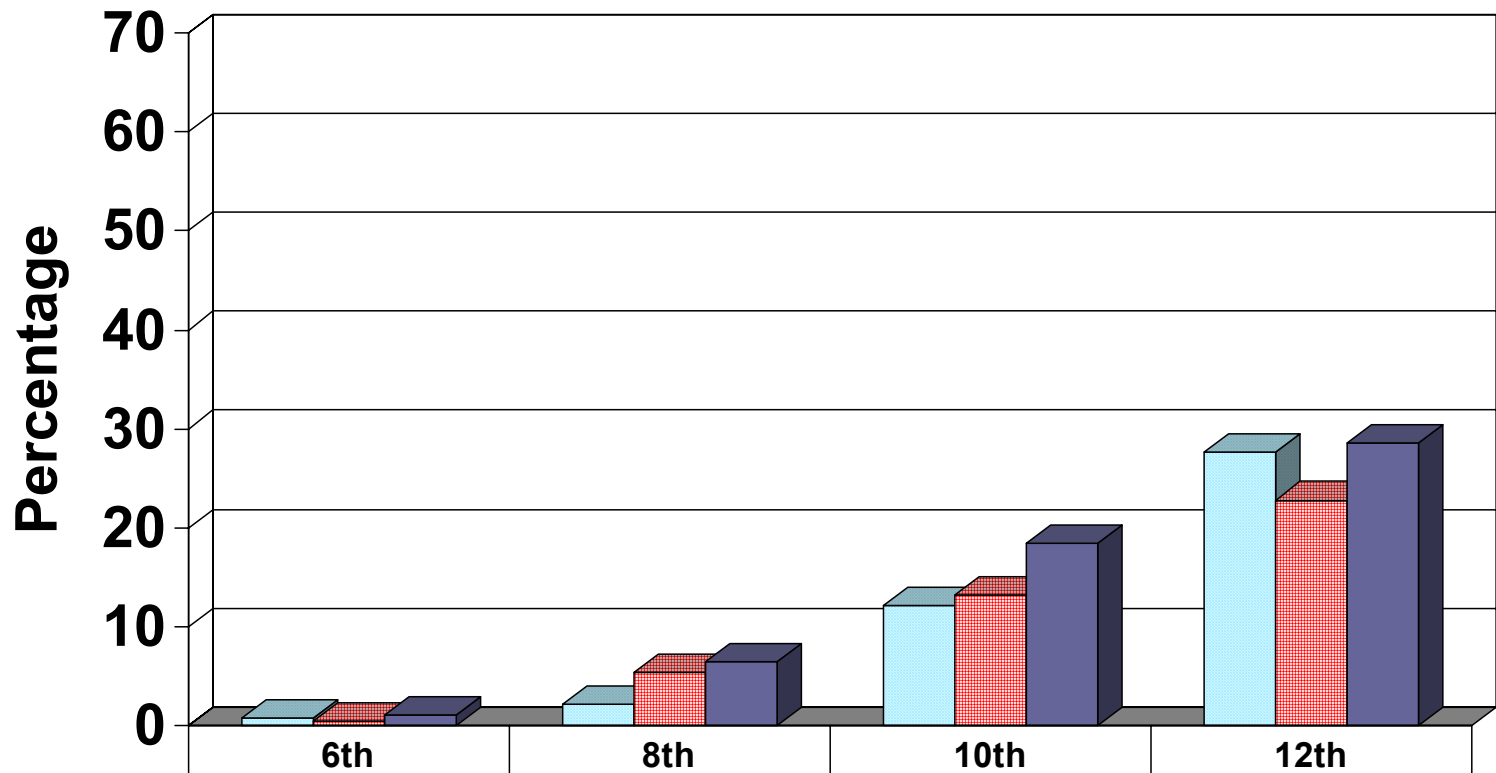
 T/E Community	0.7	3.9	22.5	45.4
 Chester County	0.8	6.5	20.4	32.9
 Pennsylvania	1	6.7	19.6	33.7

96% of 8th graders surveyed had not participated in binge drinking in the past 30 days.

55% of 12th graders surveyed had not participated in binge drinking in the past 30 days.



Tobacco: Past 30-Day Use



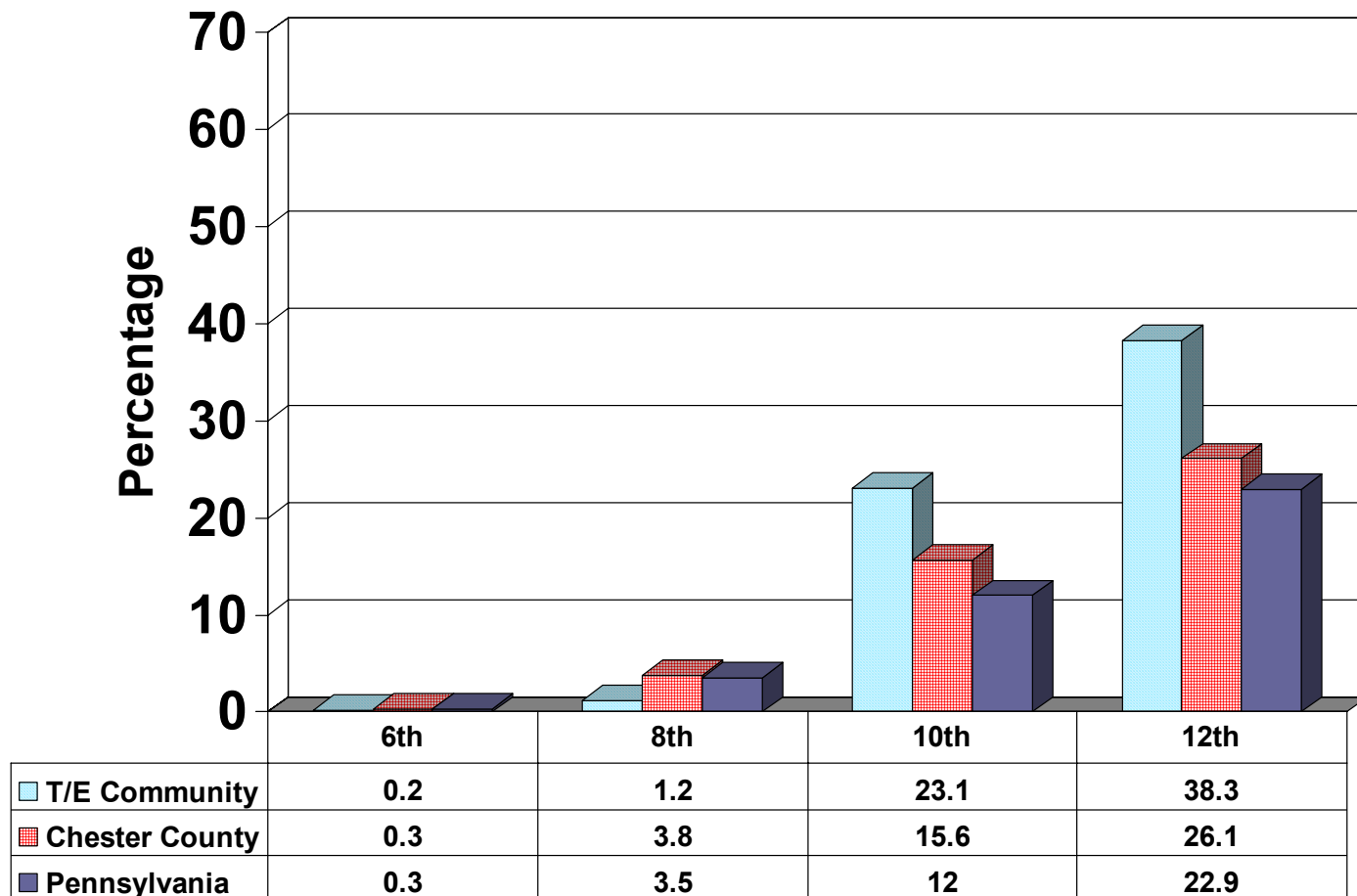
	6th	8th	10th	12th
T/E Community	0.7	2.2	12.1	27.6
Chester County	0.4	5.4	13.2	22.8
Pennsylvania	1	6.4	18.4	28.5

98% of 8th graders surveyed had not used tobacco in the past 30 days.

72% of 12th graders surveyed had not used tobacco in the past 30 days.



Marijuana: Past 30-Day Use

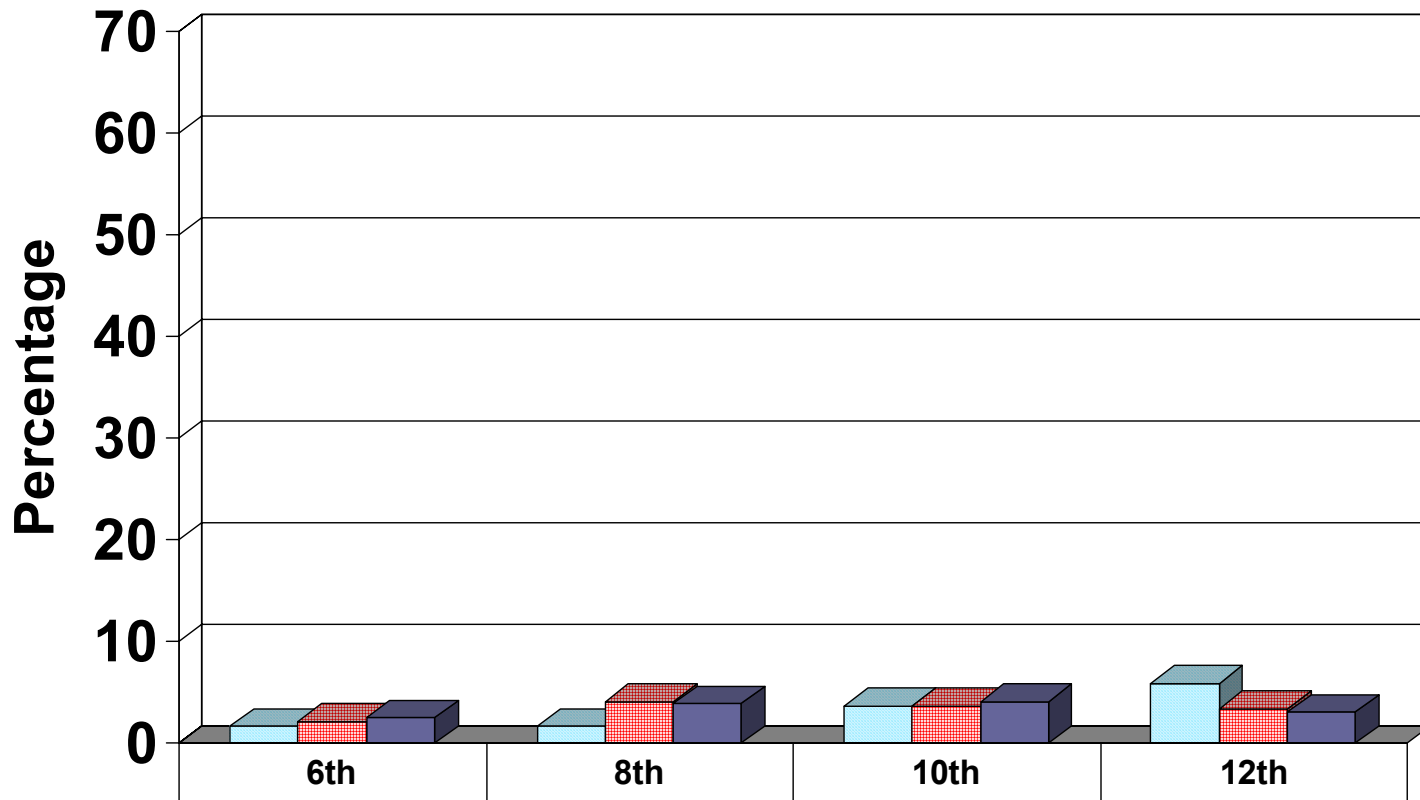


99% of 8th graders surveyed had not used marijuana in the past 30 days.

62% of 12th graders surveyed had not used marijuana in the past 30 days.

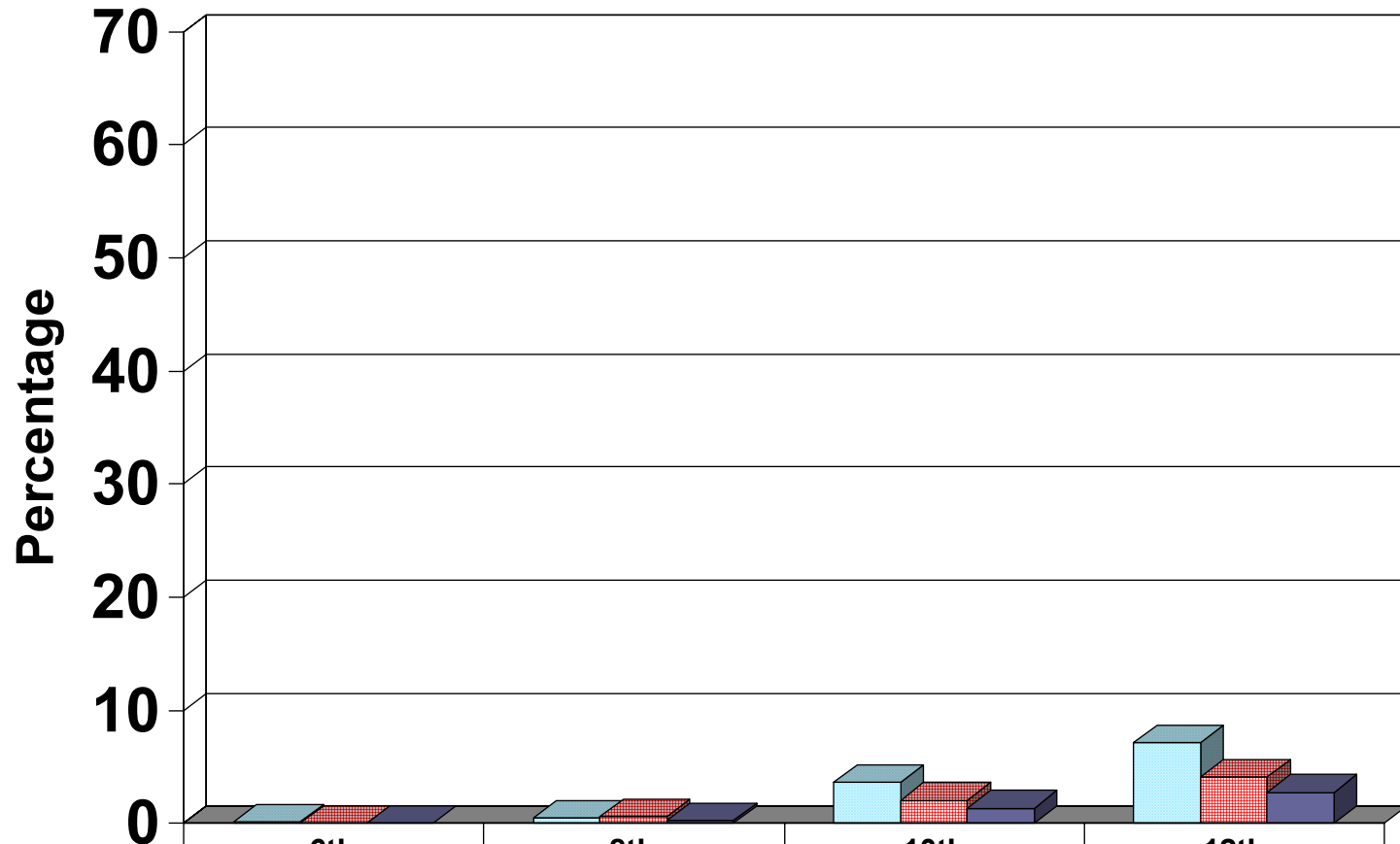





Inhalants: Past 30-Day Use



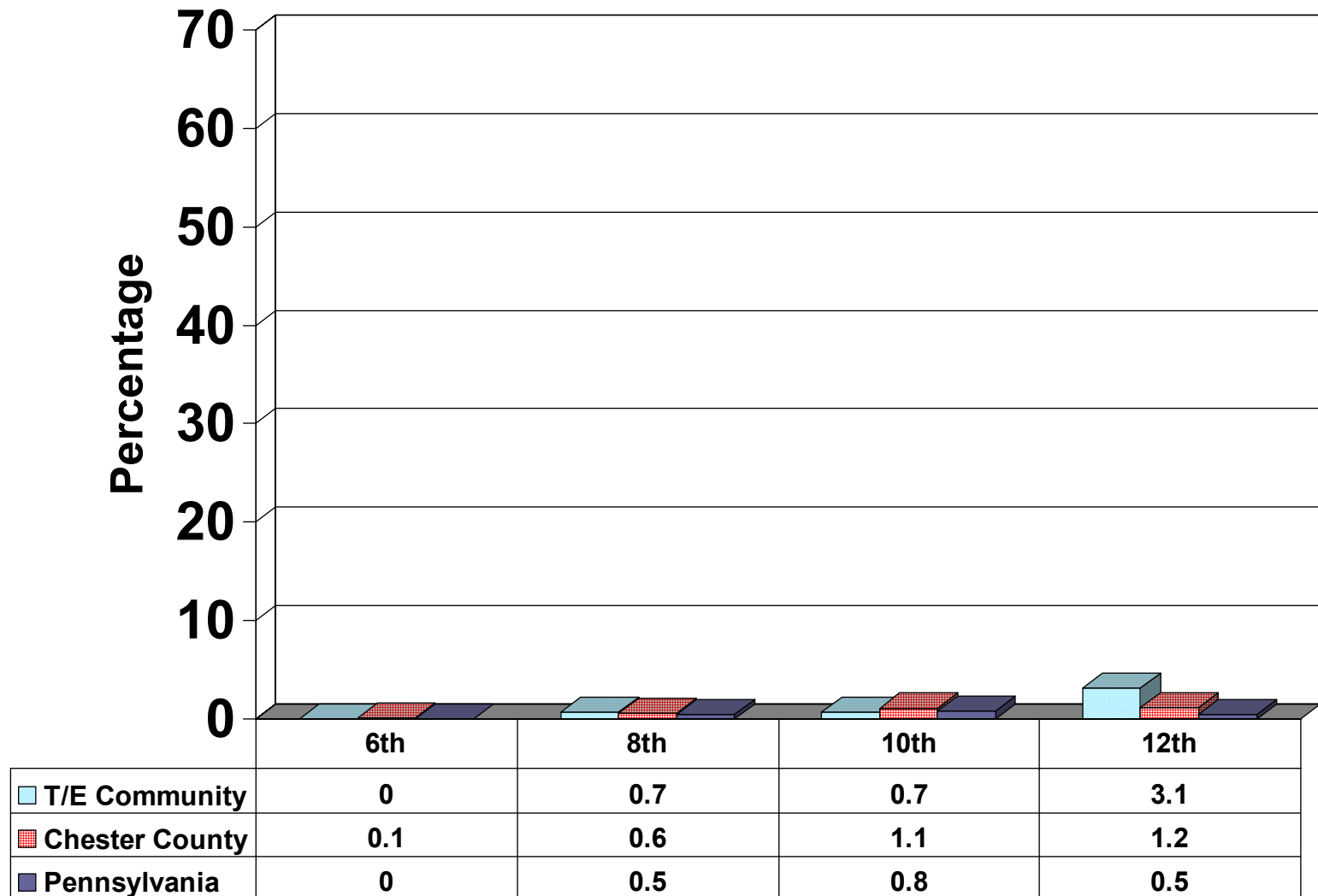
	6th	8th	10th	12th
T/E Community	1.7	1.7	3.7	5.9
Chester County	2.2	4.1	3.7	3.4
Pennsylvania	2.5	3.9	4.1	3.1

Cocaine: Past 30-Day Use

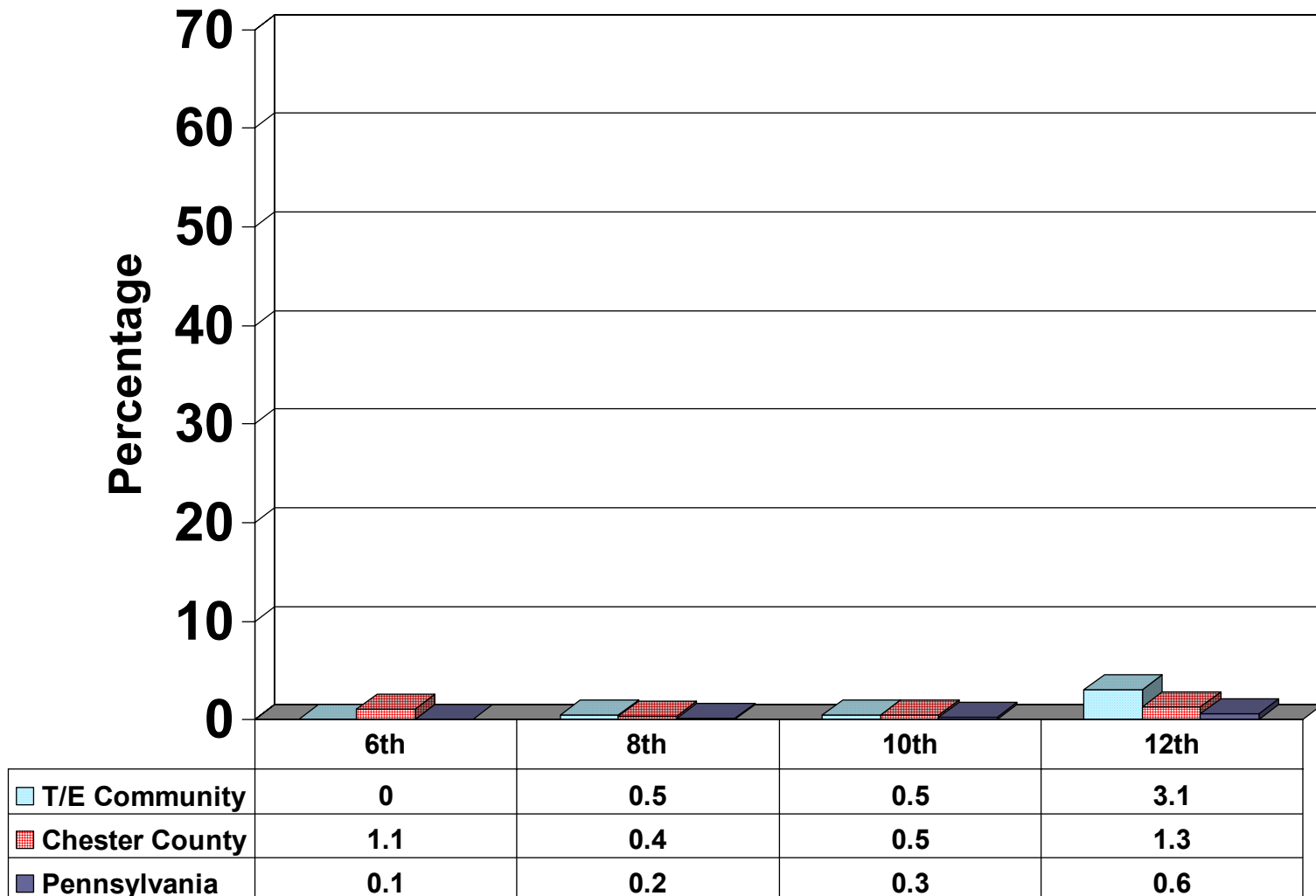


 T/E Community	0.2	0.5	3.7	7.2
 Chester County	0.1	0.6	2.1	4.1
 Pennsylvania	0	0.3	1.4	2.8

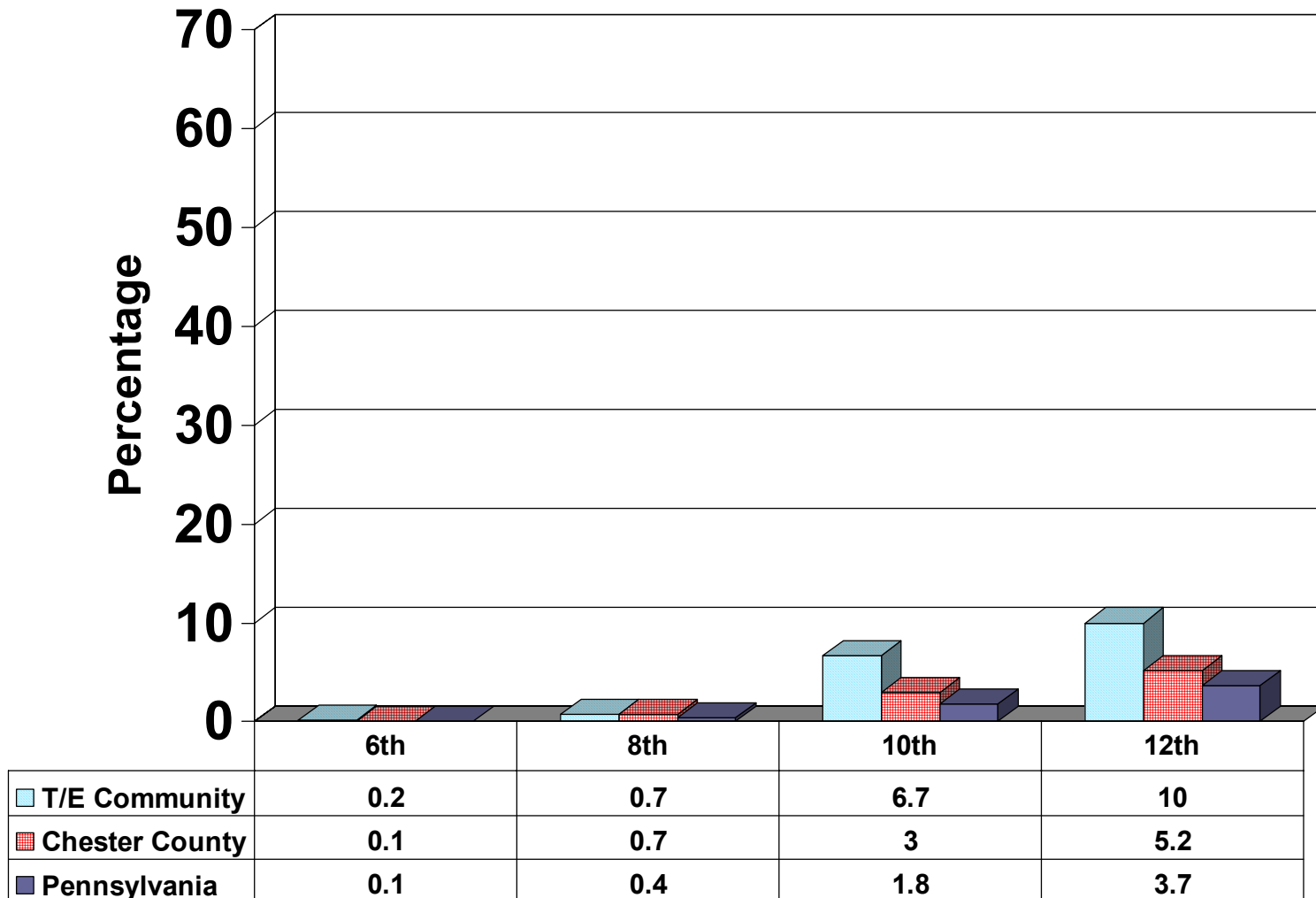
Crack Cocaine: Past 30-Day Use



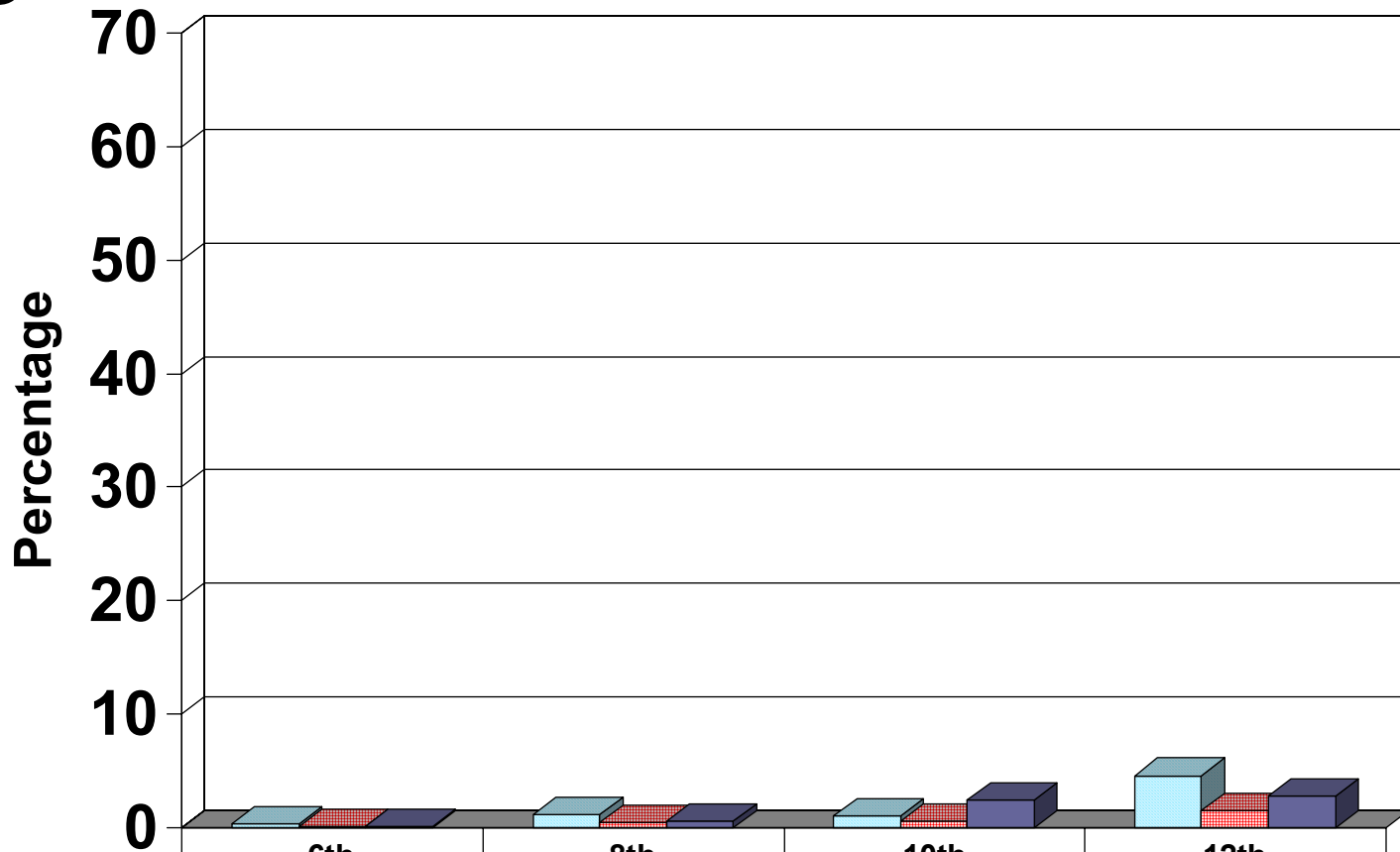
Heroin: Past 30-Day Use



Hallucinogens: Past 30-Day Use

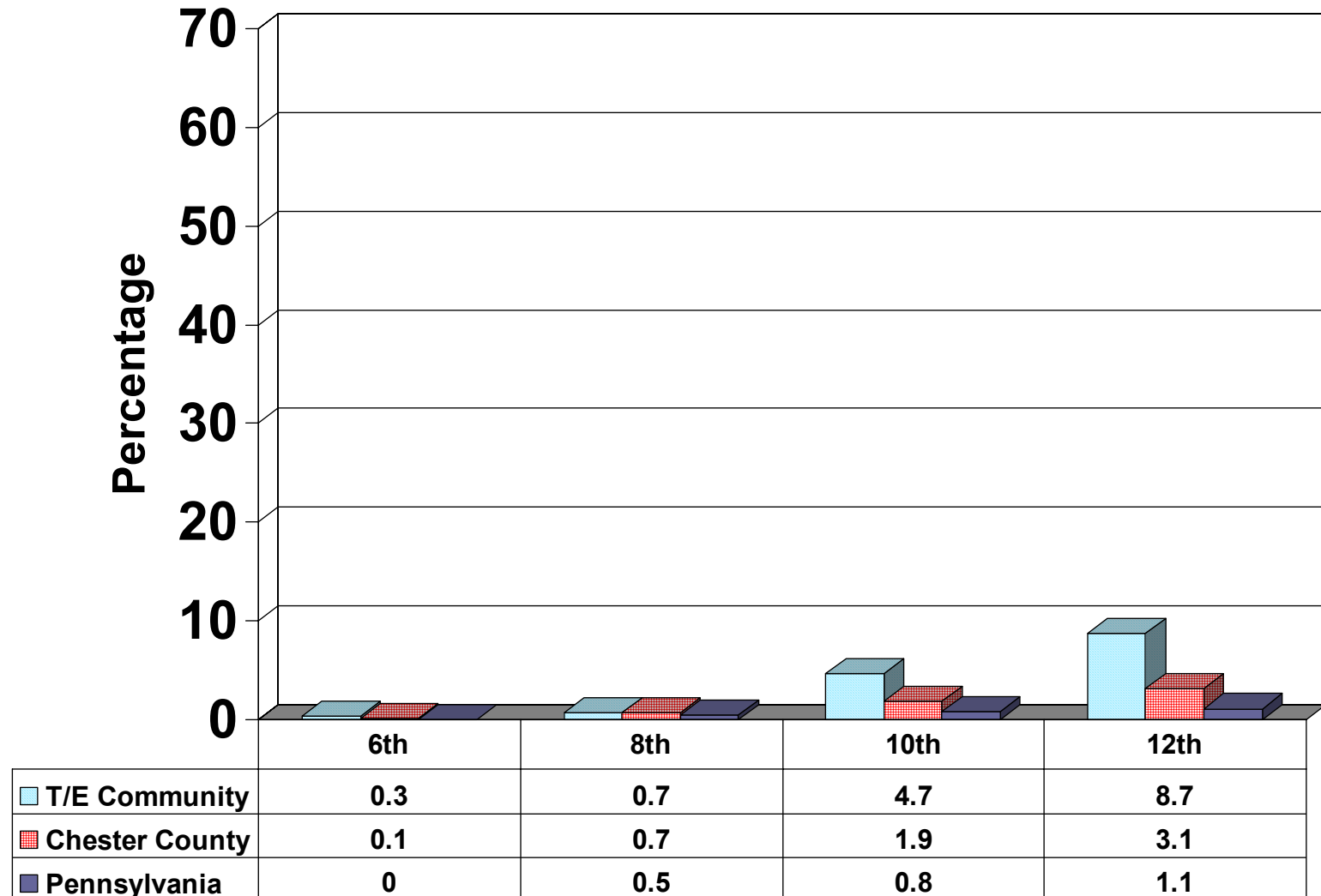


Methamphetamine: Past 30-Day Use

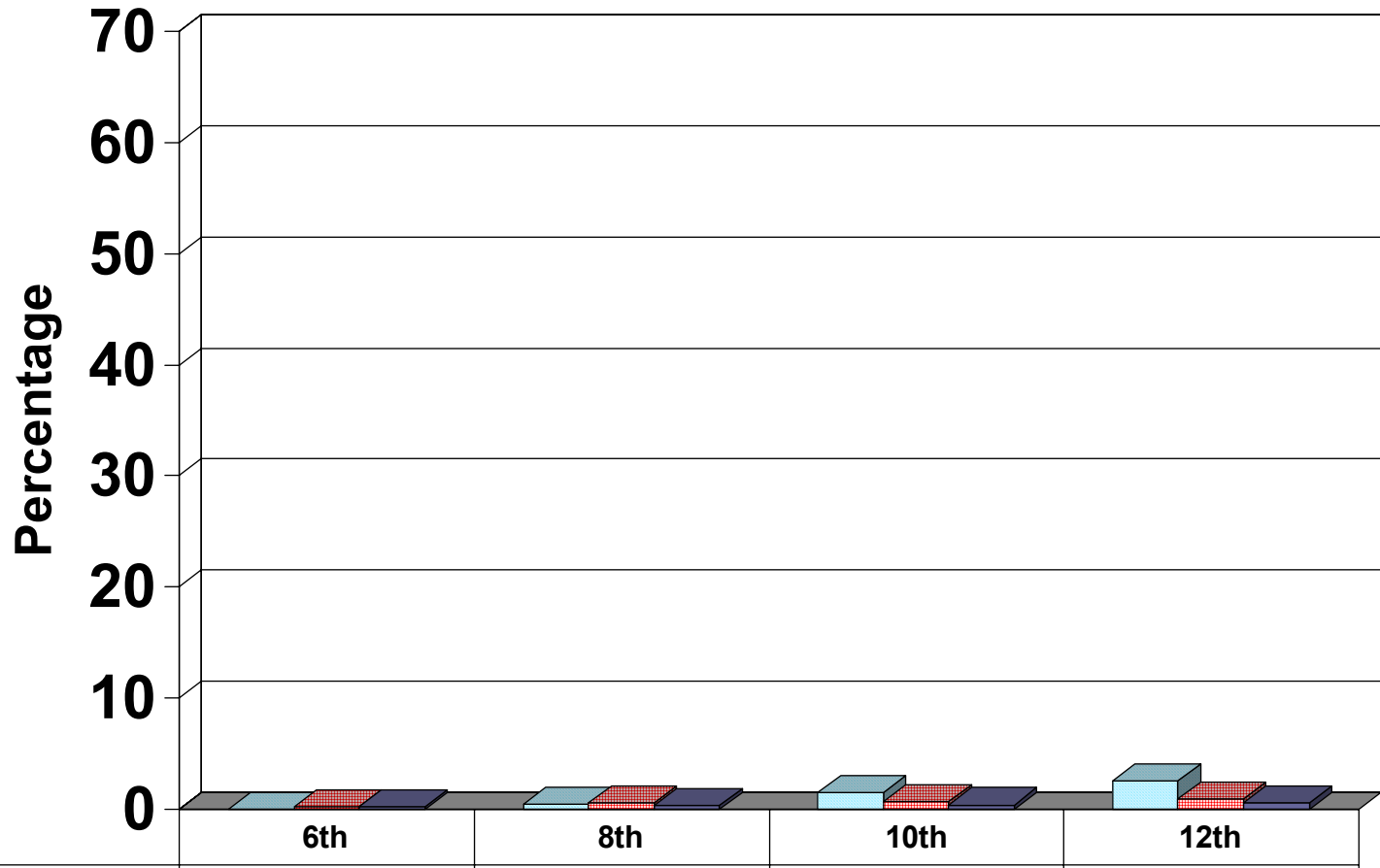


T/E Community	0.3	1.2	1	4.6
Chester County	0.1	0.5	0.6	1.5
Pennsylvania	0.1	0.6	2.4	2.8

Ecstasy: Past 30-Day Use

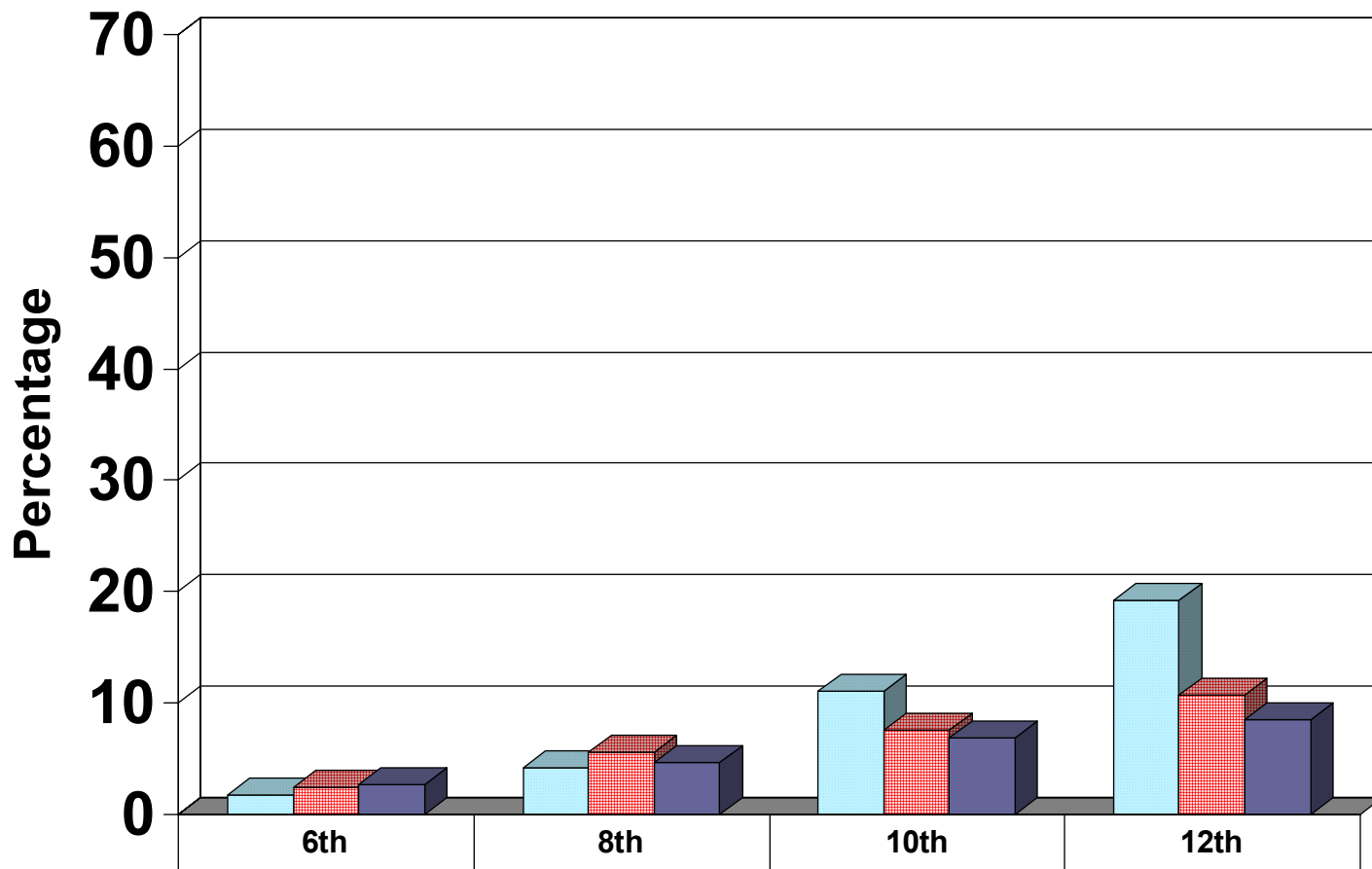


Steroids: Past 30-Day Use



T/E Community	0	0.5	1.5	2.6
Chester County	0.2	0.6	0.7	0.9
Pennsylvania	0.2	0.3	0.4	0.6

Any Illicit Drug: Past 30-Day Use



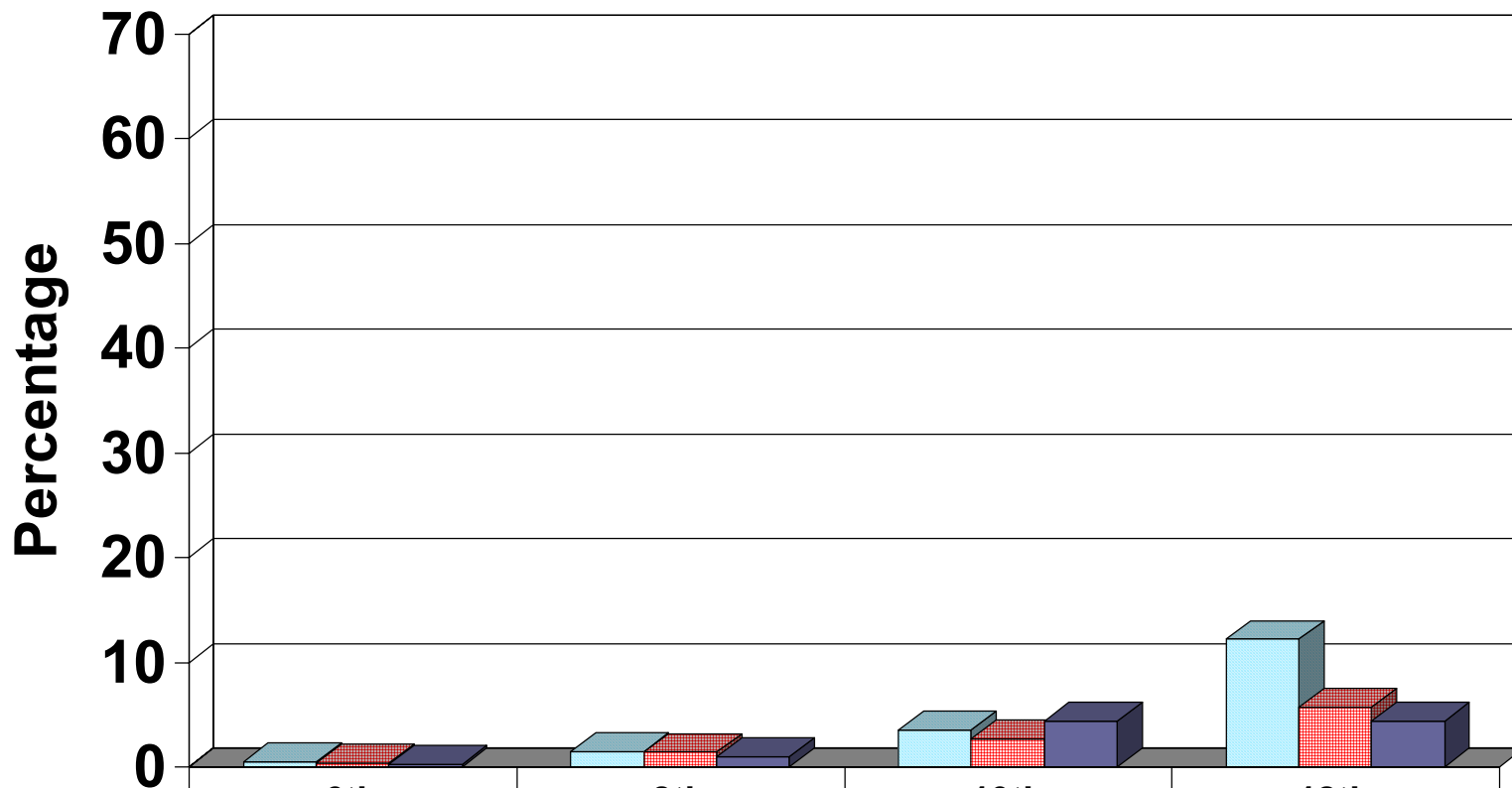
T/E Community	1.7	4.2	11.1	19.2
Chester County	2.4	5.6	7.6	10.7
Pennsylvania	2.7	4.7	6.9	8.5



Prescription Drugs: Amphetamines

- Uppers
- Bennies
- Pep pills
- Diet pills

Prescription Drugs: Amphetamines Past 30-Day Use



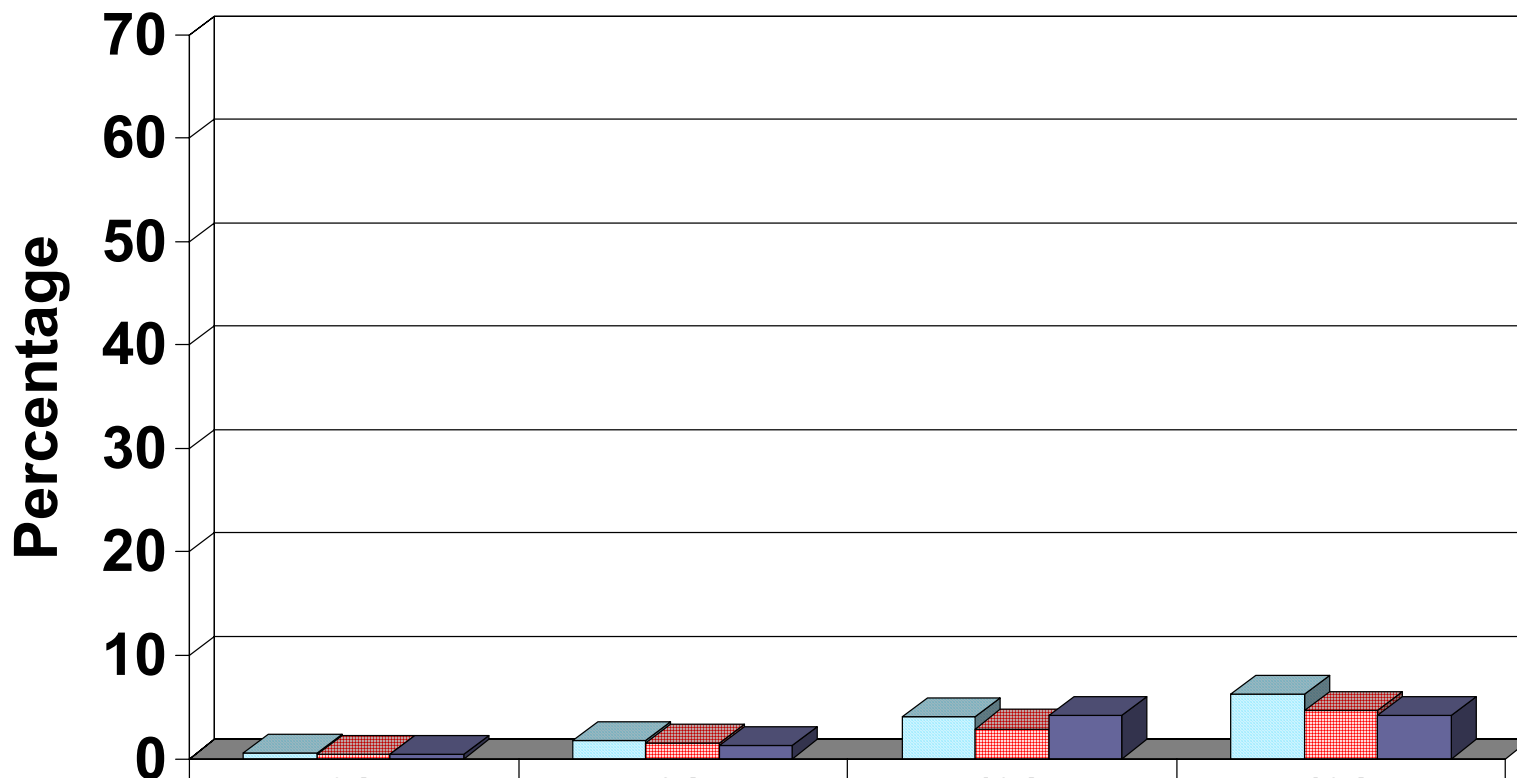
	6th	8th	10th	12th
T/E Community	0.5	1.5	3.5	12.2
Chester County	0.4	1.4	2.7	5.7
Pennsylvania	0.3	1	4.4	4.4






Prescription Drugs: Sedatives

- Phenobarbital
- Tuinal
- Nembutal
- Seconal

Prescription Drugs: Sedatives Past 30-Day Use



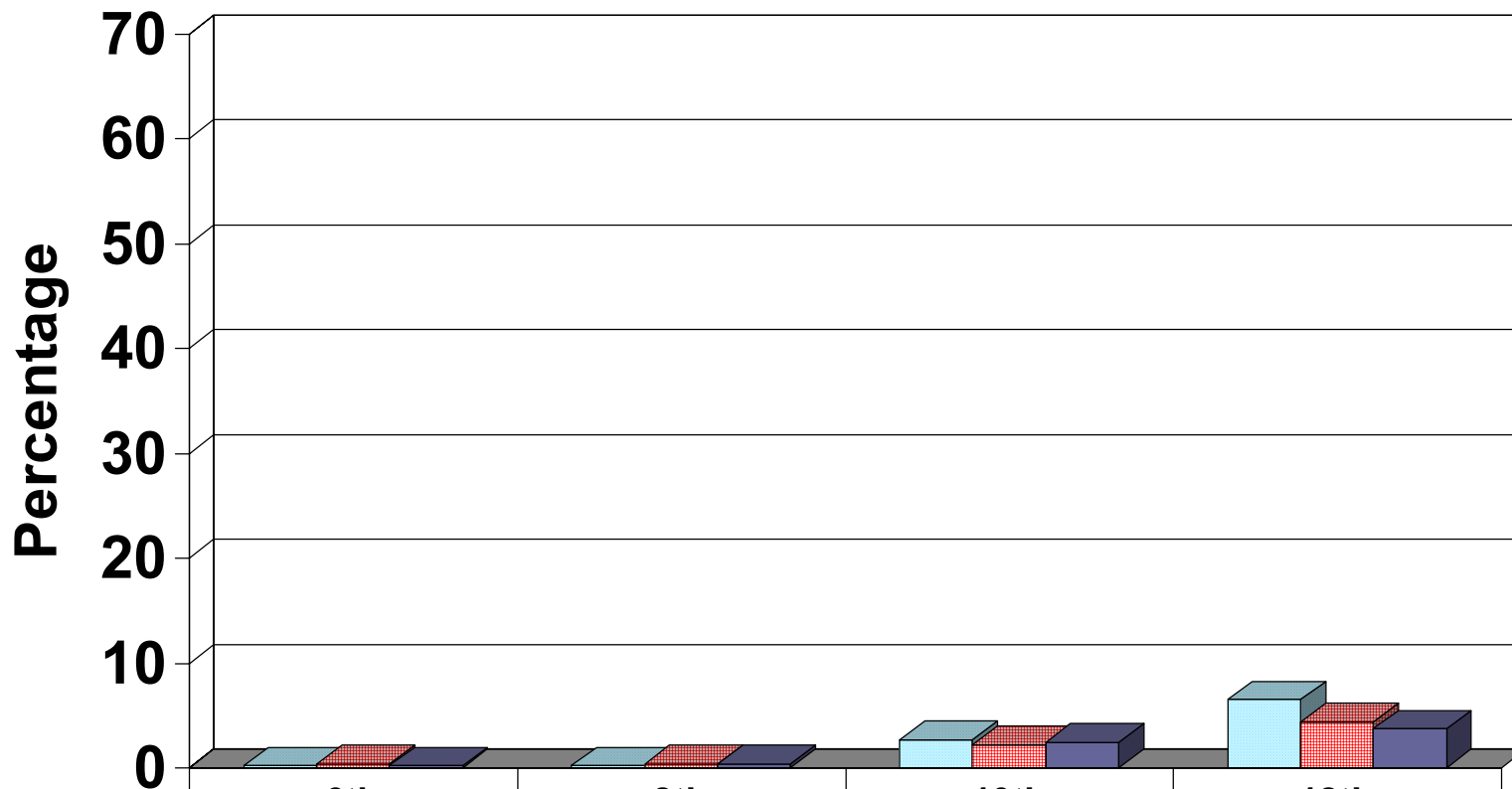
 T/E Community	0.5	1.7	4	6.2
 Chester County	0.4	1.5	2.9	4.7
 Pennsylvania	0.4	1.3	4.2	4.2



Prescription Drugs: Tranquilizers

- Librium
- Valium
- Xanax

Prescription Drugs: Tranquilizers Past 30-Day Use



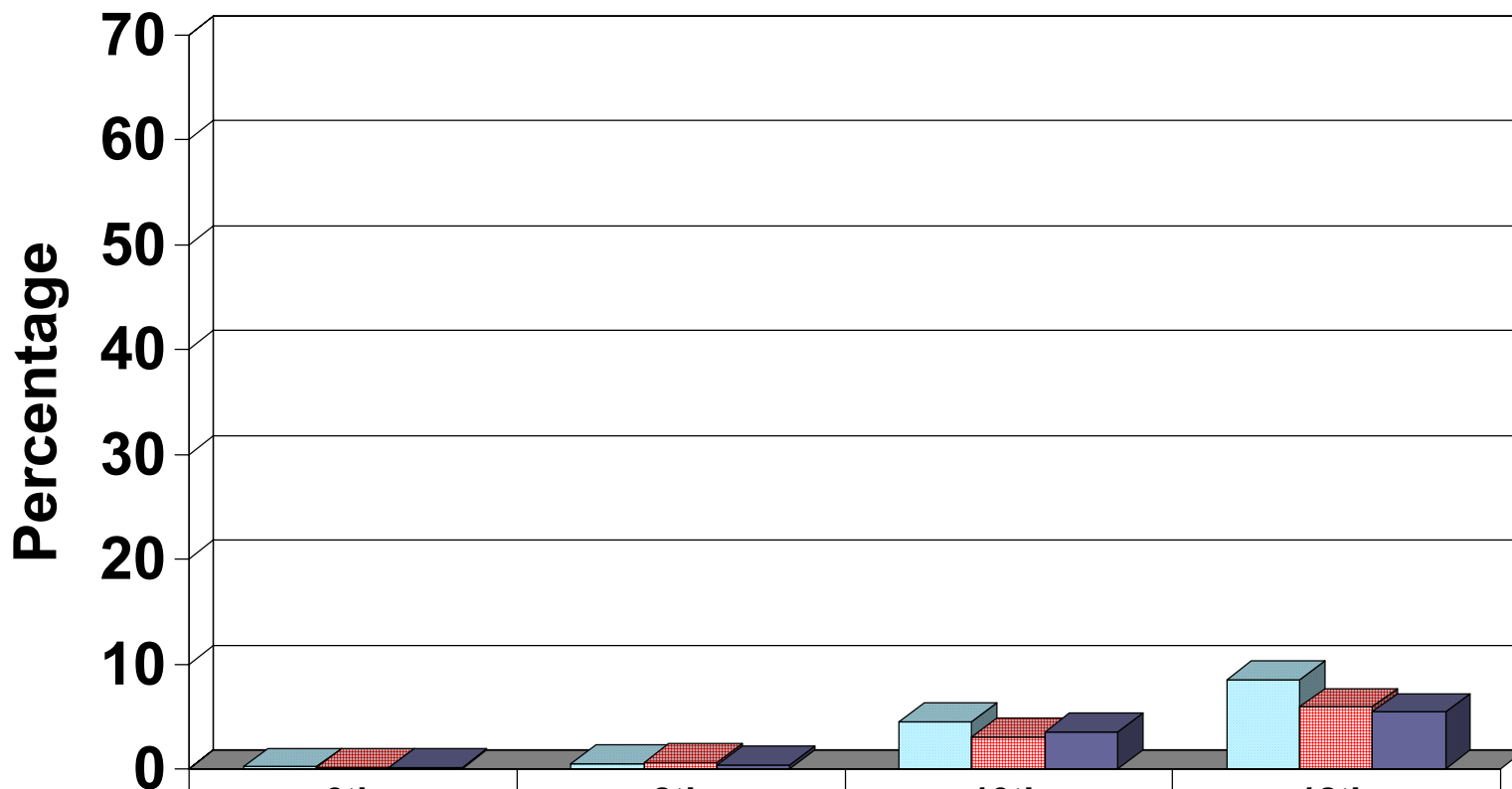
	6th	8th	10th	12th
T/E Community	0.2	0.2	2.7	6.5
Chester County	0.4	0.4	2.2	4.4
Pennsylvania	0.2	0.4	2.4	3.7






Prescription Drugs: Narcotics

- Methadone
- Morphine
- Codeine
- Demerol
- Vicodin
- OxyContin
- Percocet

Prescription Drugs: Narcotics Past 30-Day Use



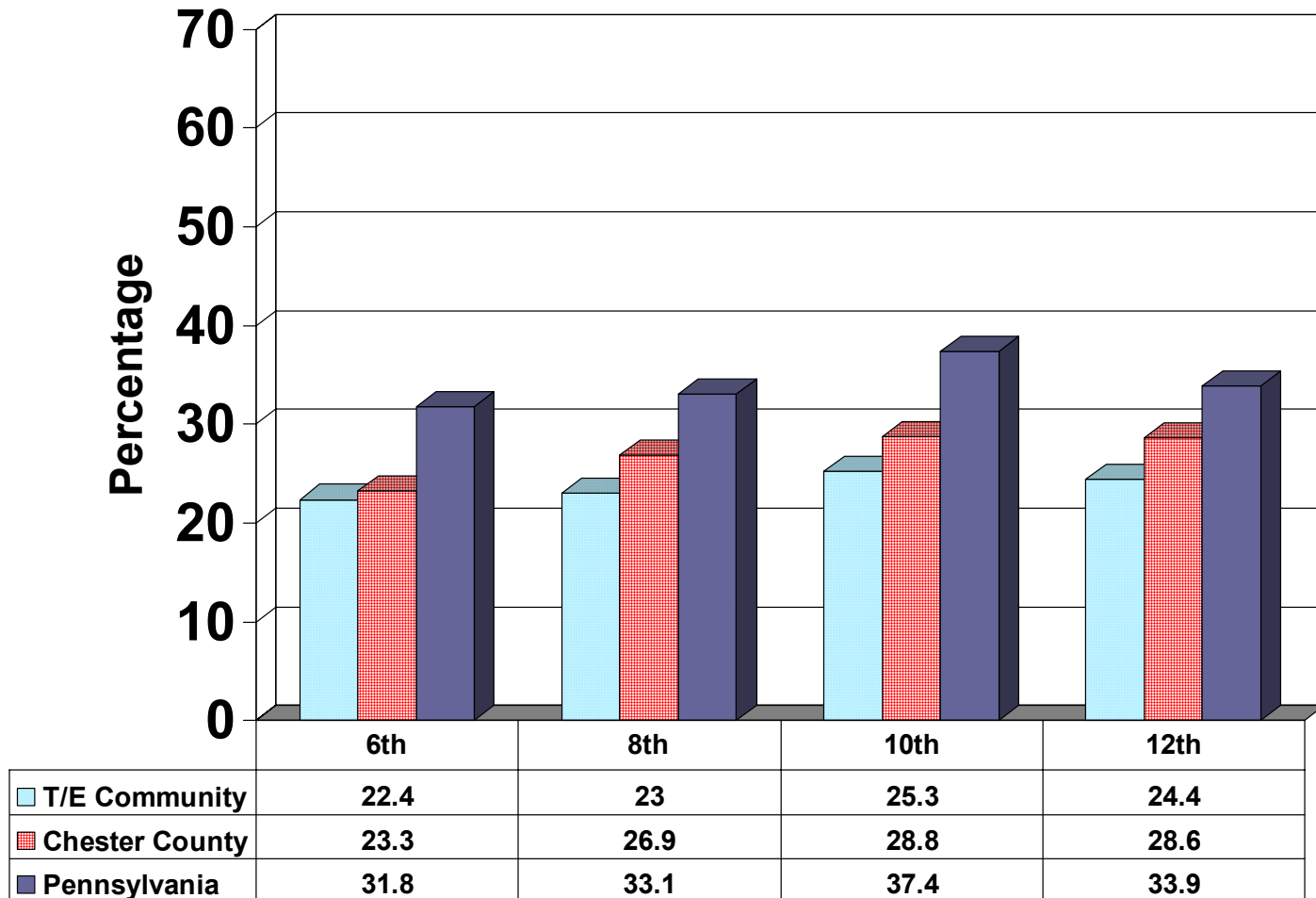
 T/E Community	0.2	0.5	4.5	8.5
 Chester County	0.1	0.6	3	5.9
 Pennsylvania	0.1	0.4	3.5	5.4



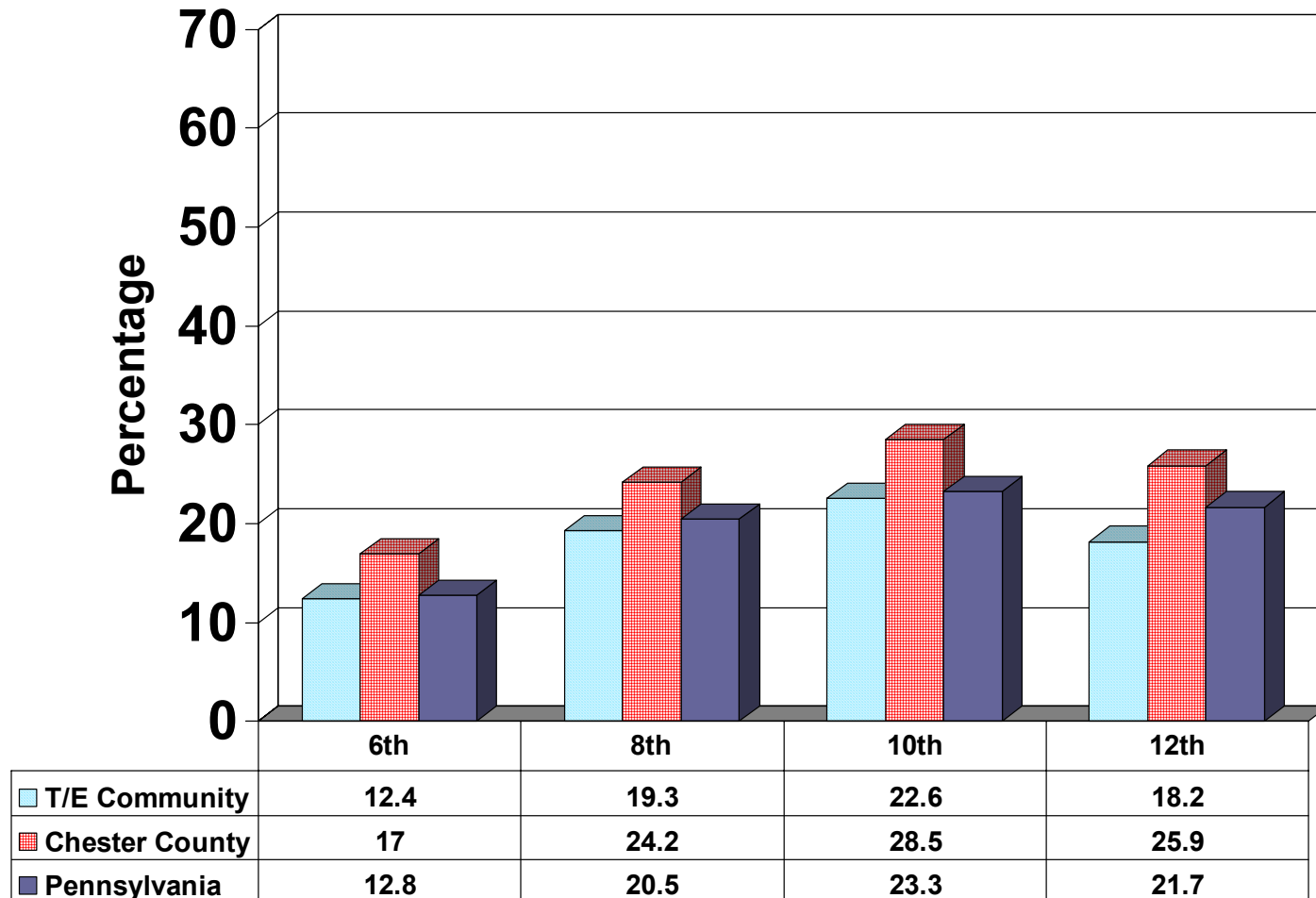
Depression: Past Year

- Four questions asked about feelings of sadness, hopelessness, and worthlessness

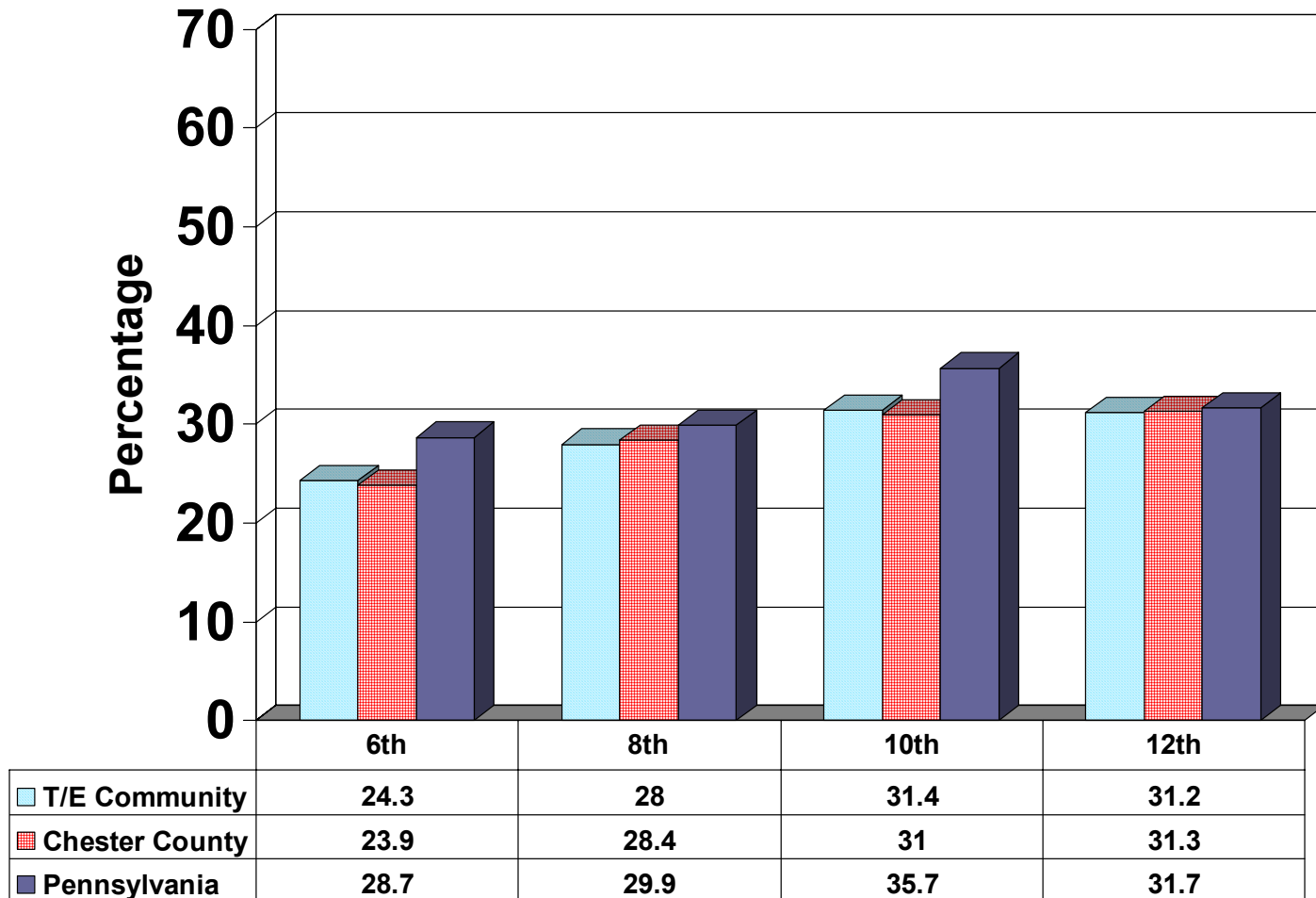
Depression Results: In the past year, felt depressed or sad most days



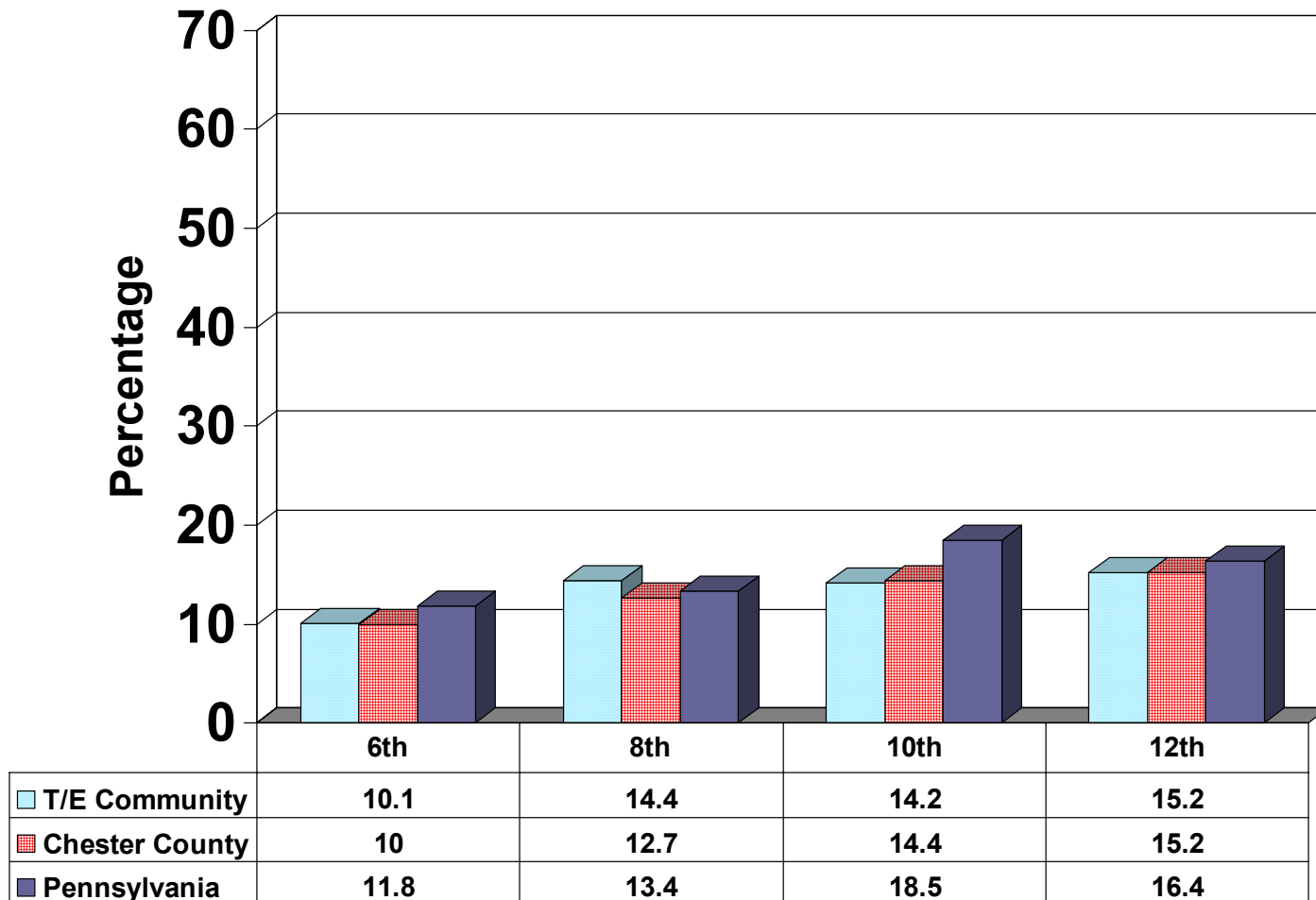
Depression Results: Sometimes I think that life is not worth it



Depression Results: At times I think I am not good at all



Depression Results: All in all, I am inclined to think that I am a failure

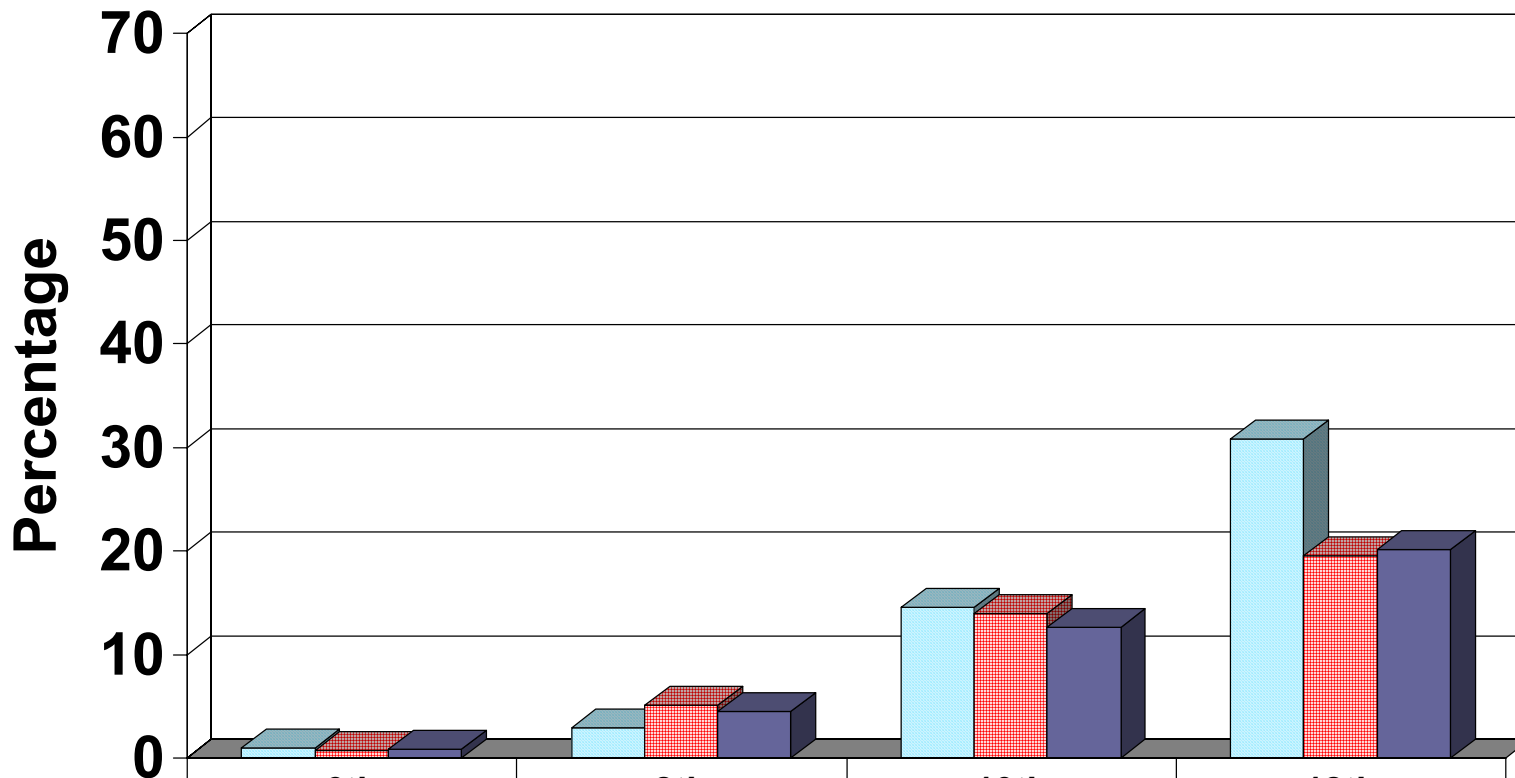







Antisocial Behavior: Notable Results

- Being drunk or high at school or school-related activities continues to be the primary antisocial behavior among our youth.
- Compared to 12th graders statewide, 12th graders in T/E reported higher rates of selling drugs.

Being Drunk or High at School*: Past 12 Months



 T/E Community	1	2.9	14.6	30.8
 Chester County	0.7	5.1	13.9	19.5
 Pennsylvania	0.8	4.5	12.6	20.1

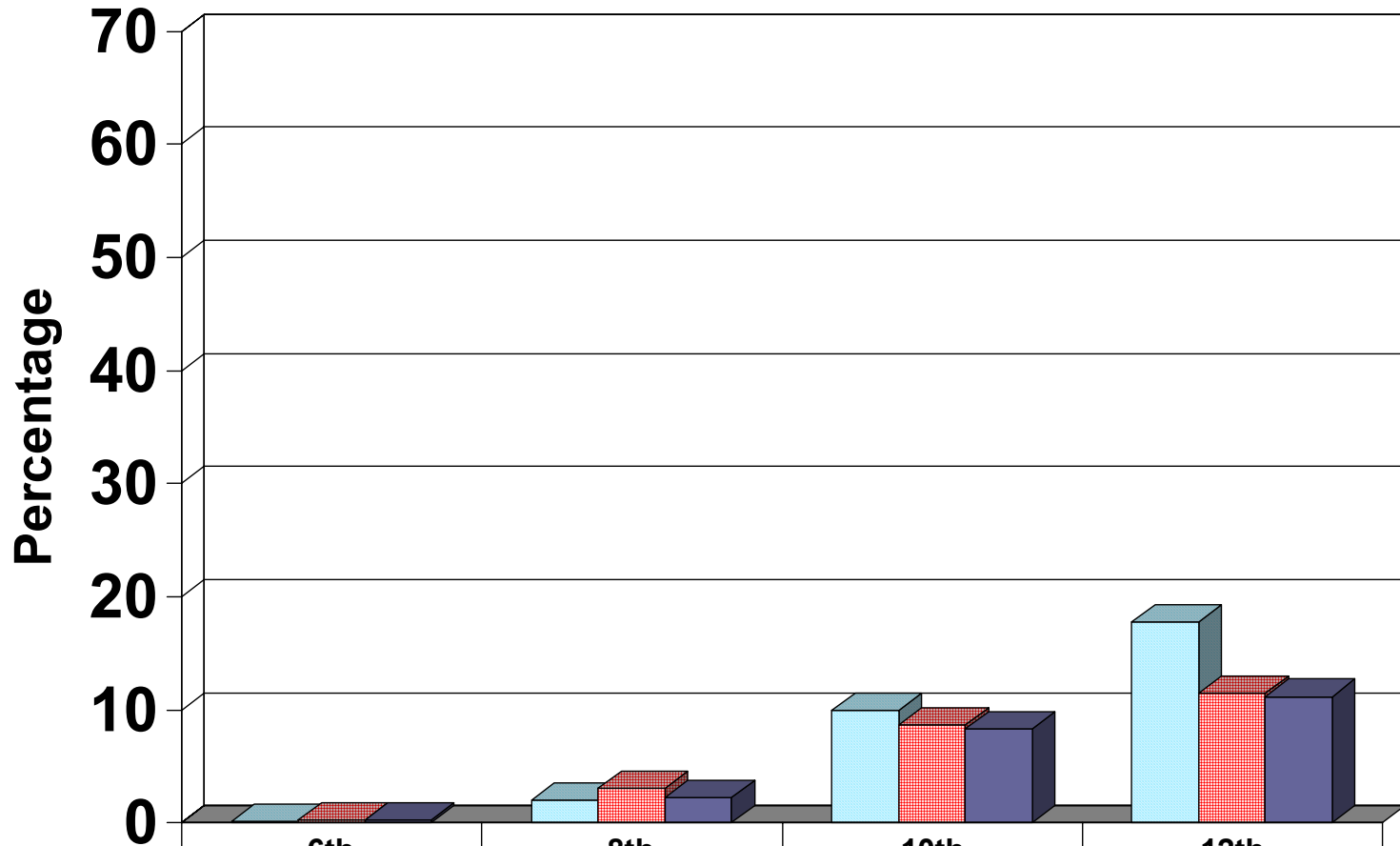
* Please note that some respondents may interpret this item as during the school day, while others may include school-related activities beyond the school day.

97% of 8th graders surveyed reported that they had not been drunk or high at school in the past 30 days.

69% of 12th graders surveyed reported that they had not been drunk or high at school in the past 30 days.



Selling Drugs: Past 12 Months



	6th	8th	10th	12th
T/E Community	0.2	2	10	17.8
Chester County	0.3	3.1	8.7	11.5
Pennsylvania	0.3	2.3	8.3	11.2

98% of 8th graders surveyed reported that they had not sold drugs in the past 30 days.

82% of 12th graders surveyed reported that they had not sold drugs in the past 30 days.

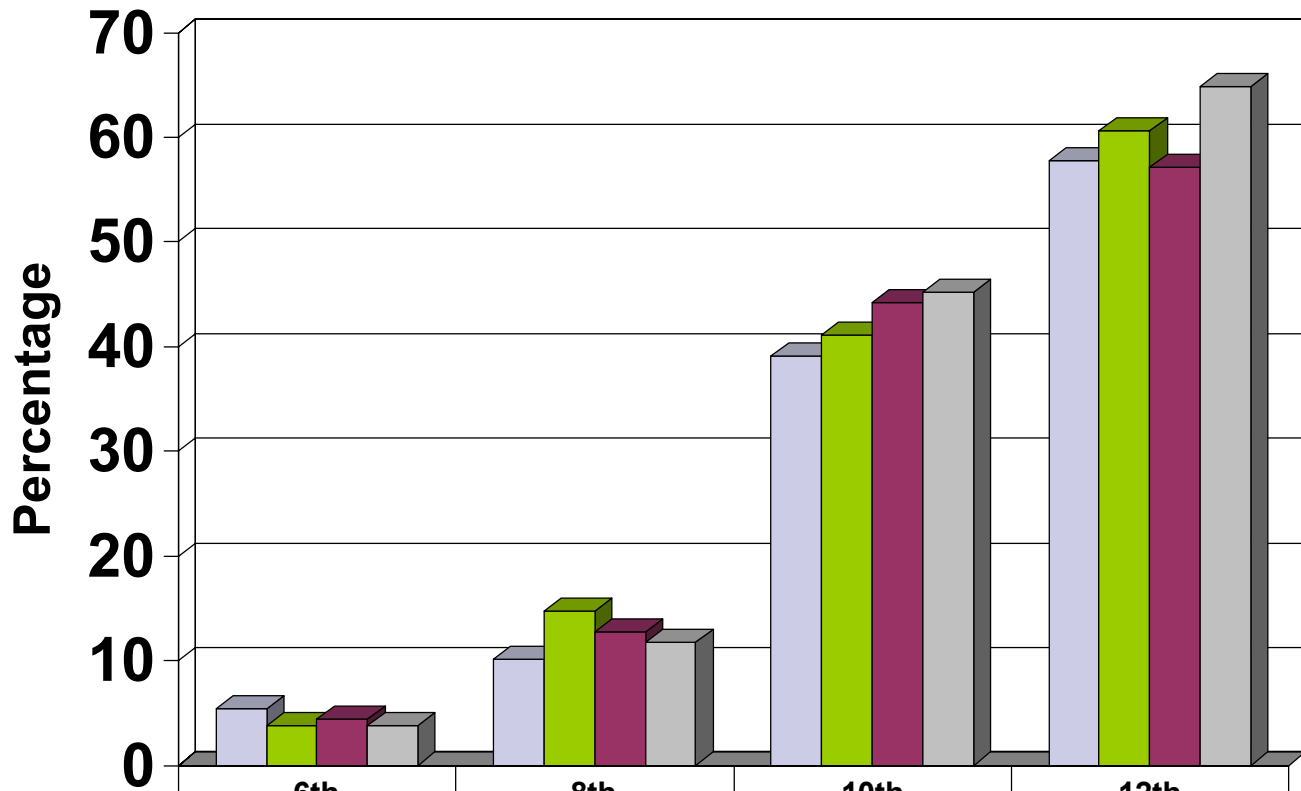




Trends in T/E Data

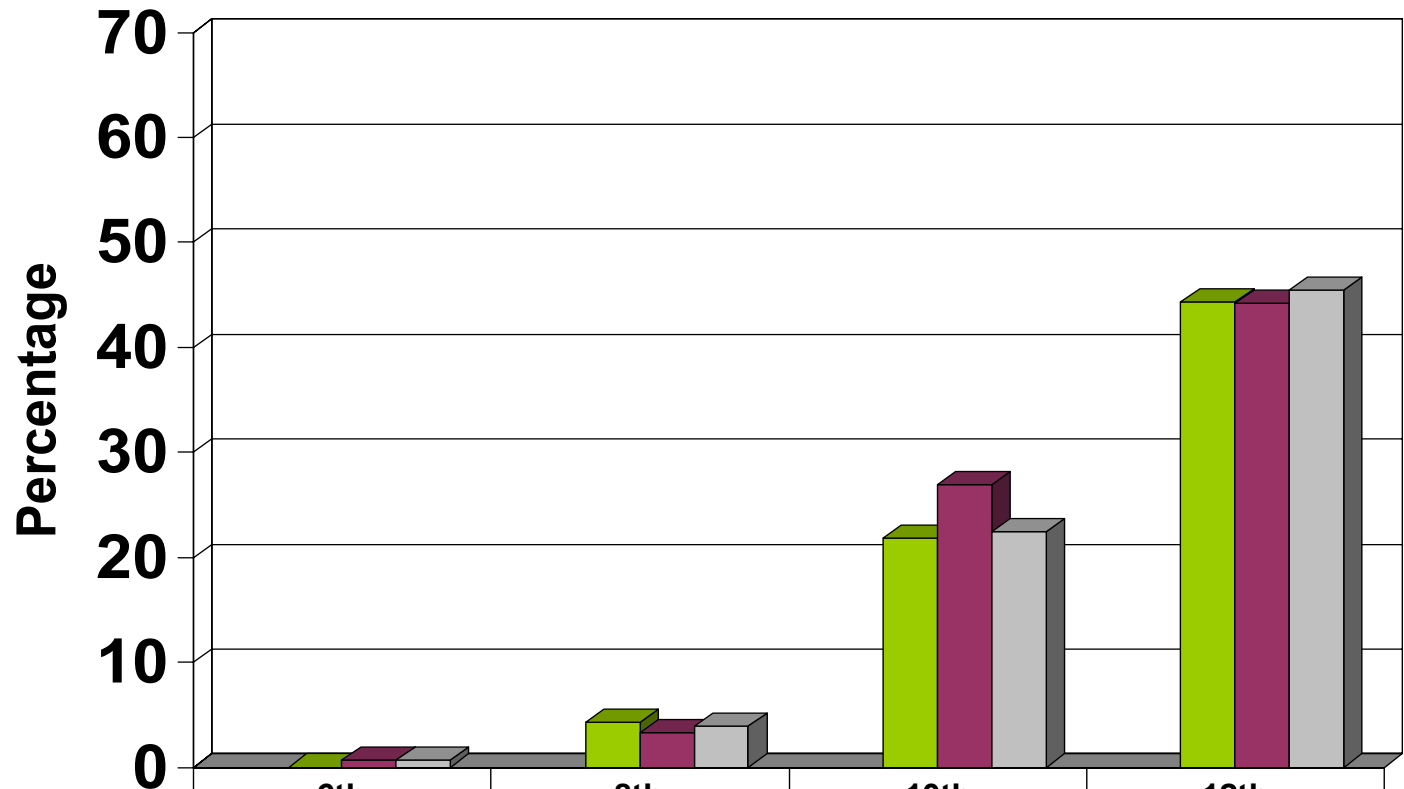
- With four years of data we can now begin to look for trends in our results

Alcohol Past 30-Day Use: 1998, 2001, 2003, 2005



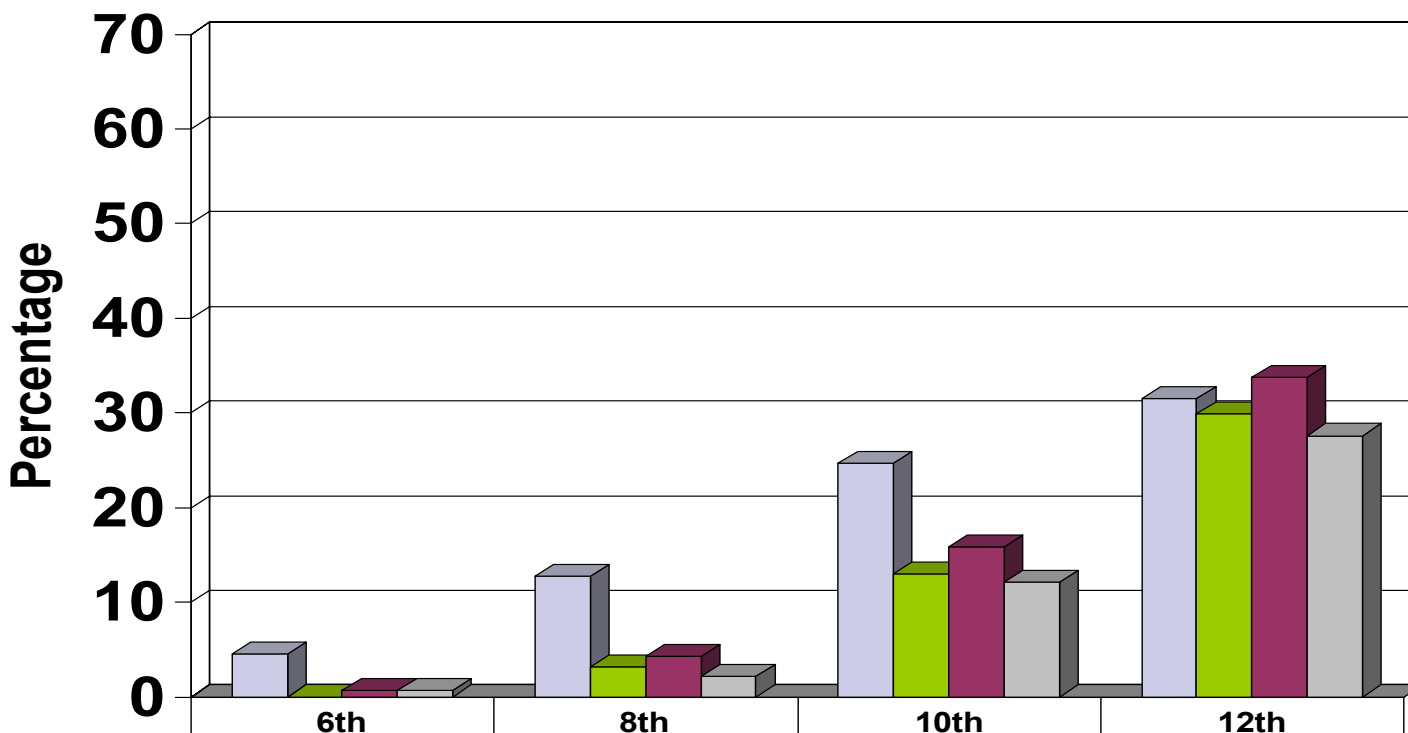
■ T/E Community - 1998	5.4	10.1	39.1	57.8
■ T/E Community - 2001	3.8	14.7	41.1	60.6
■ T/E Community - 2003	4.4	12.8	44.2	57.1
■ T/E Community - 2005	3.8	11.8	45.2	64.9

Binge Drinking: 1998, 2001, 2003, 2005



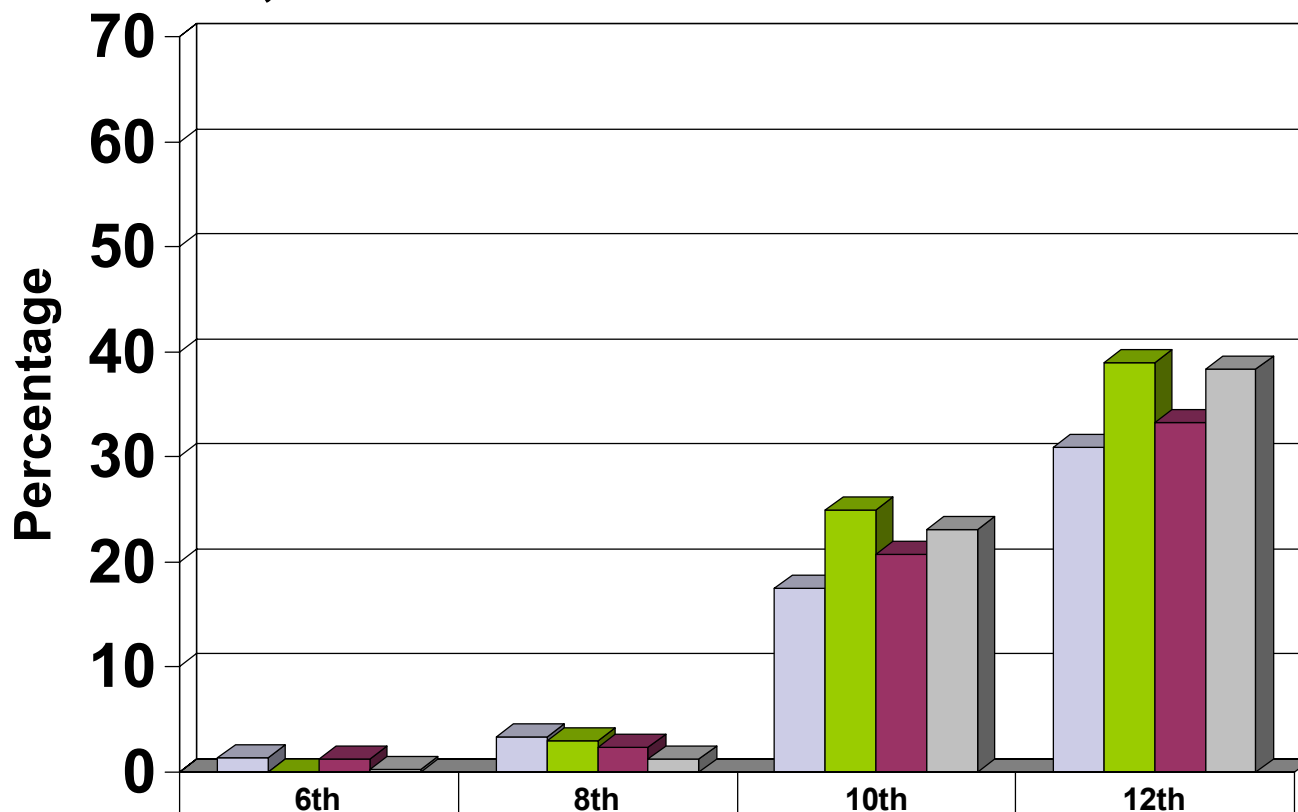
■ T/E Community - 1998	No Data	No Data	No Data	No Data
■ T/E Community - 2001	0	4.3	21.8	44.3
■ T/E Community - 2003	0.7	3.3	26.9	44.2
■ T/E Community - 2005	0.7	3.9	22.5	45.4

Tobacco Past 30-Day Use: 1998, 2001, 2003, 2005



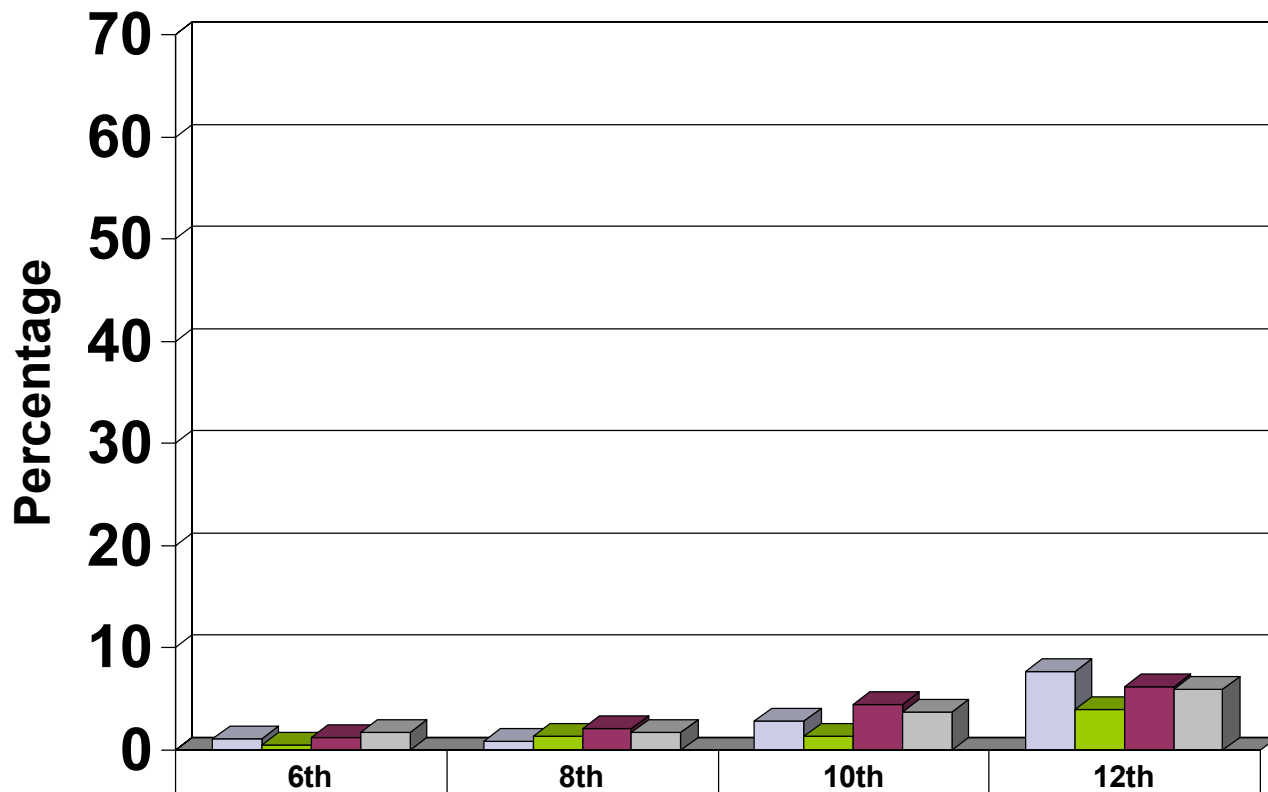
■ T/E Community - 1998	4.5	12.8	24.7	31.5
■ T/E Community - 2001	0	3.2	13	29.9
■ T/E Community - 2003	0.7	4.3	15.9	33.7
■ T/E Community - 2005	0.7	2.2	12.1	27.6

Marijuana Past 30-Day Use: 1998, 2001, 2003, 2005



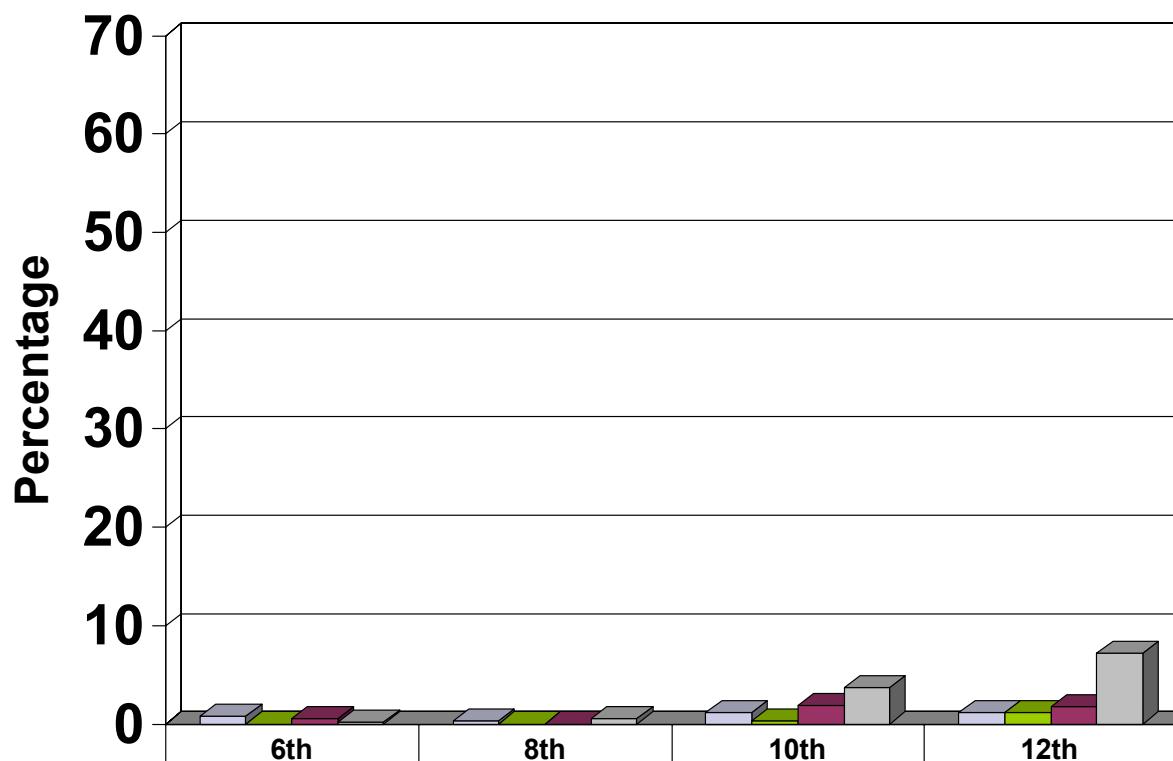
■ T/E Community - 1998	1.4	3.3	17.5	30.9
■ T/E Community - 2001	0	3	24.9	39
■ T/E Community - 2003	1.2	2.4	20.7	33.3
■ T/E Community - 2005	0.2	1.2	23.1	38.3

Inhalants Past 30-Day Use: 1998, 2001, 2003, 2005



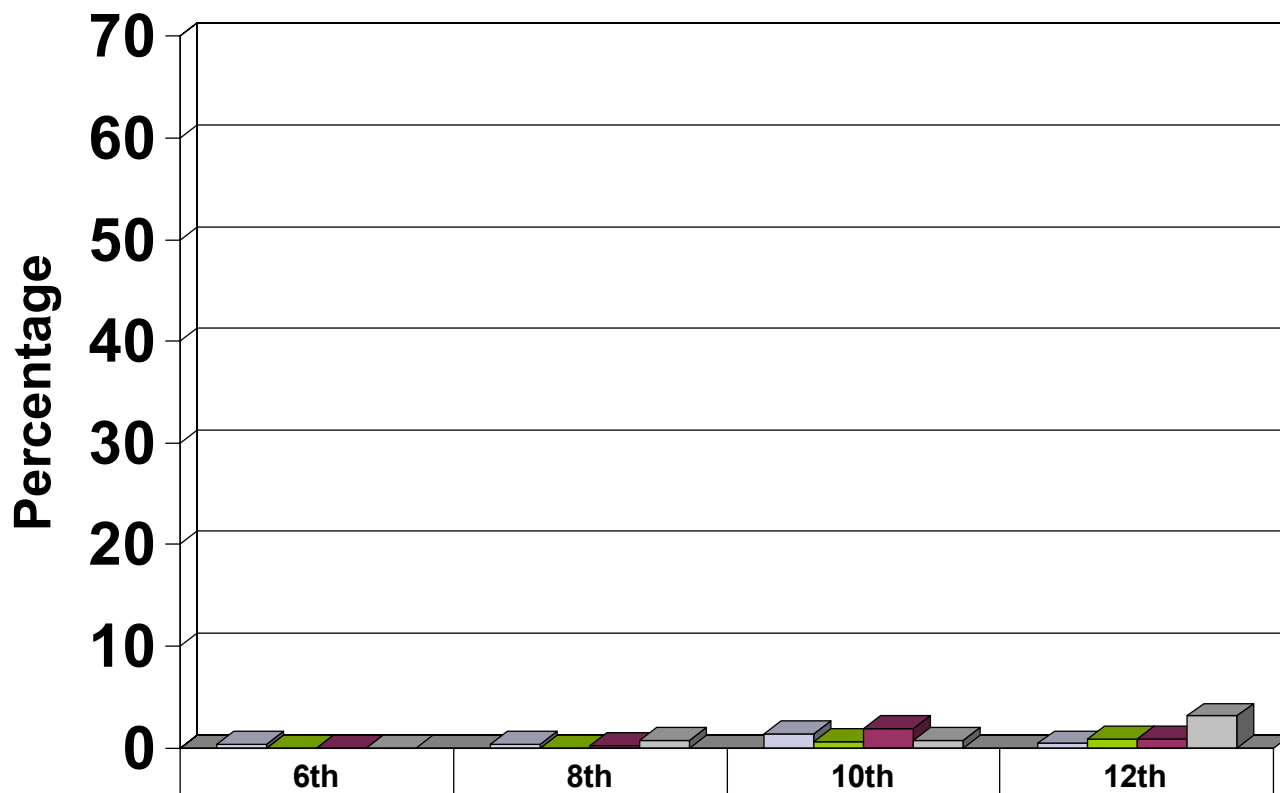
	6th	8th	10th	12th
■ T/E Community - 1998	1.1	0.9	2.9	7.7
■ T/E Community - 2001	0.5	1.4	1.4	4
■ T/E Community - 2003	1.2	2.1	4.5	6.2
■ T/E Community - 2005	1.7	1.7	3.7	5.9

Cocaine Past 30-Day Use: 1998, 2001, 2003, 2005



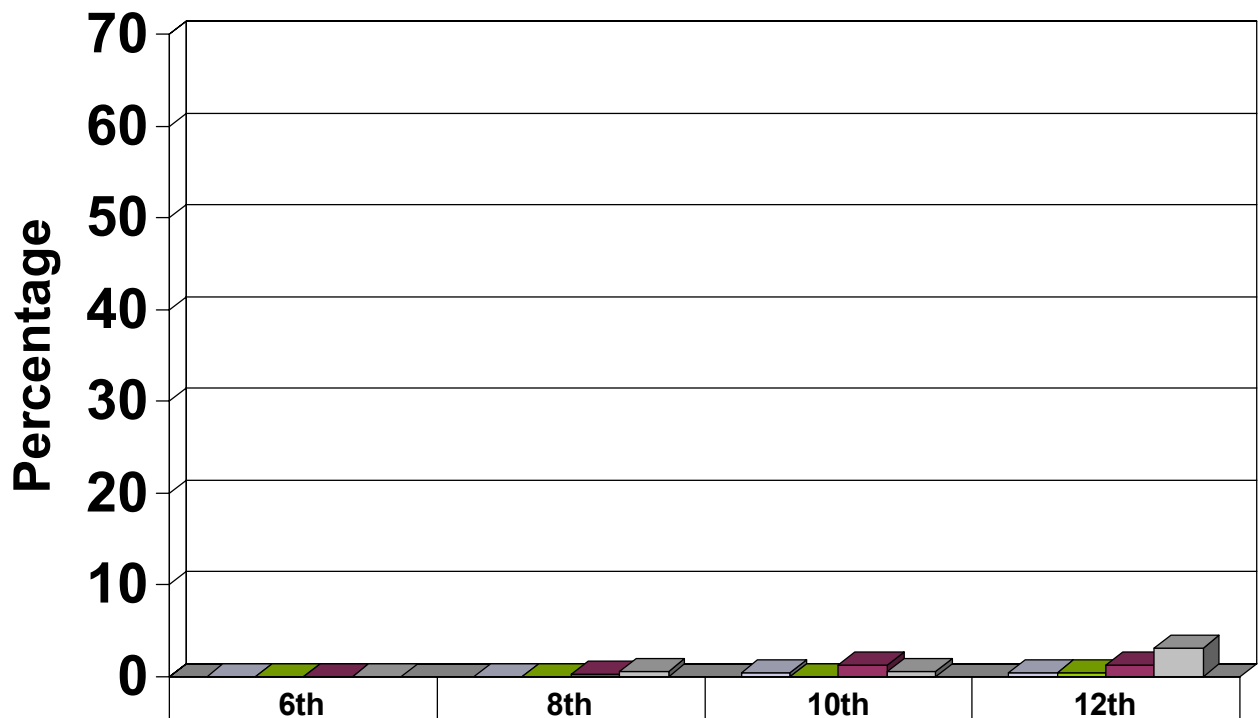
	6th	8th	10th	12th
■ T/E Community - 1998	0.8	0.3	1.1	1.2
■ T/E Community - 2001	0	0	0.3	1.2
■ T/E Community - 2003	0.5	0	1.9	1.8
■ T/E Community - 2005	0.2	0.5	3.7	7.2

Crack Cocaine Past 30-Day Use: 2001, 2003, 2005



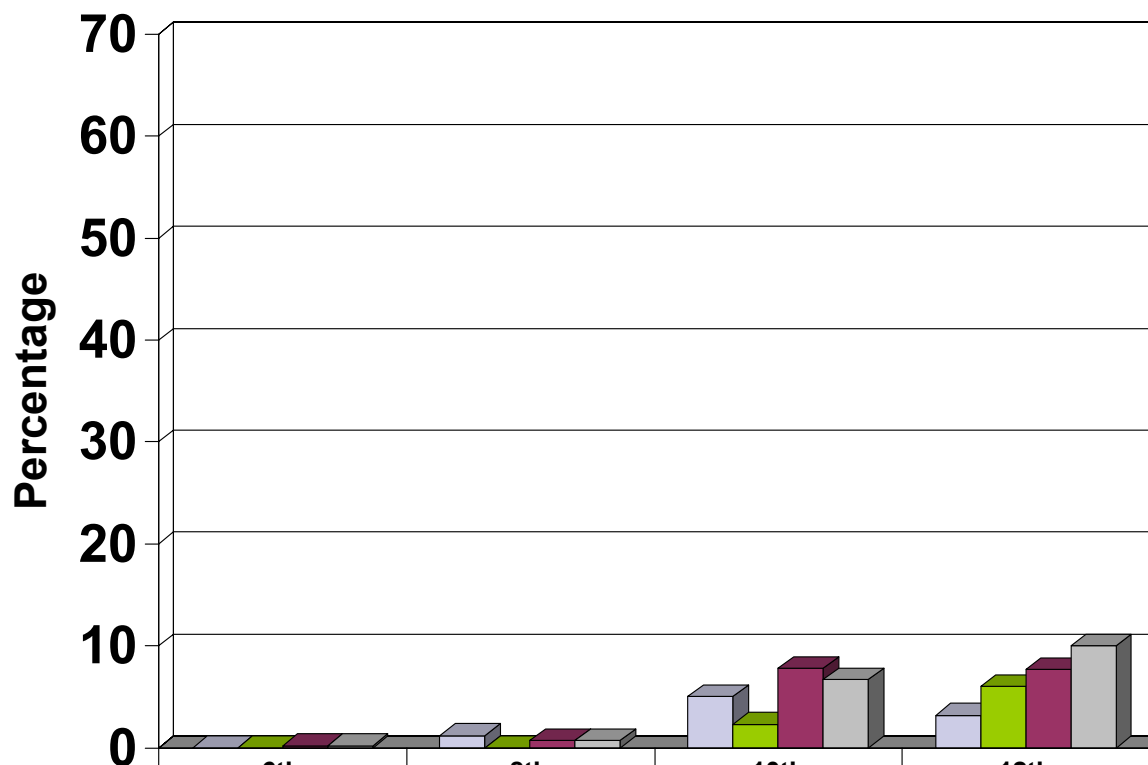
	6th	8th	10th	12th
■ T/E Community - 1998	0.3	0.3	1.4	0.4
■ T/E Community - 2001	0	0	0.6	0.8
■ T/E Community - 2003	0	0.2	1.9	0.9
■ T/E Community - 2005	0	0.7	0.7	3.1

Heroin Past 30-Day Use: 1998, 2001, 2003, 2005



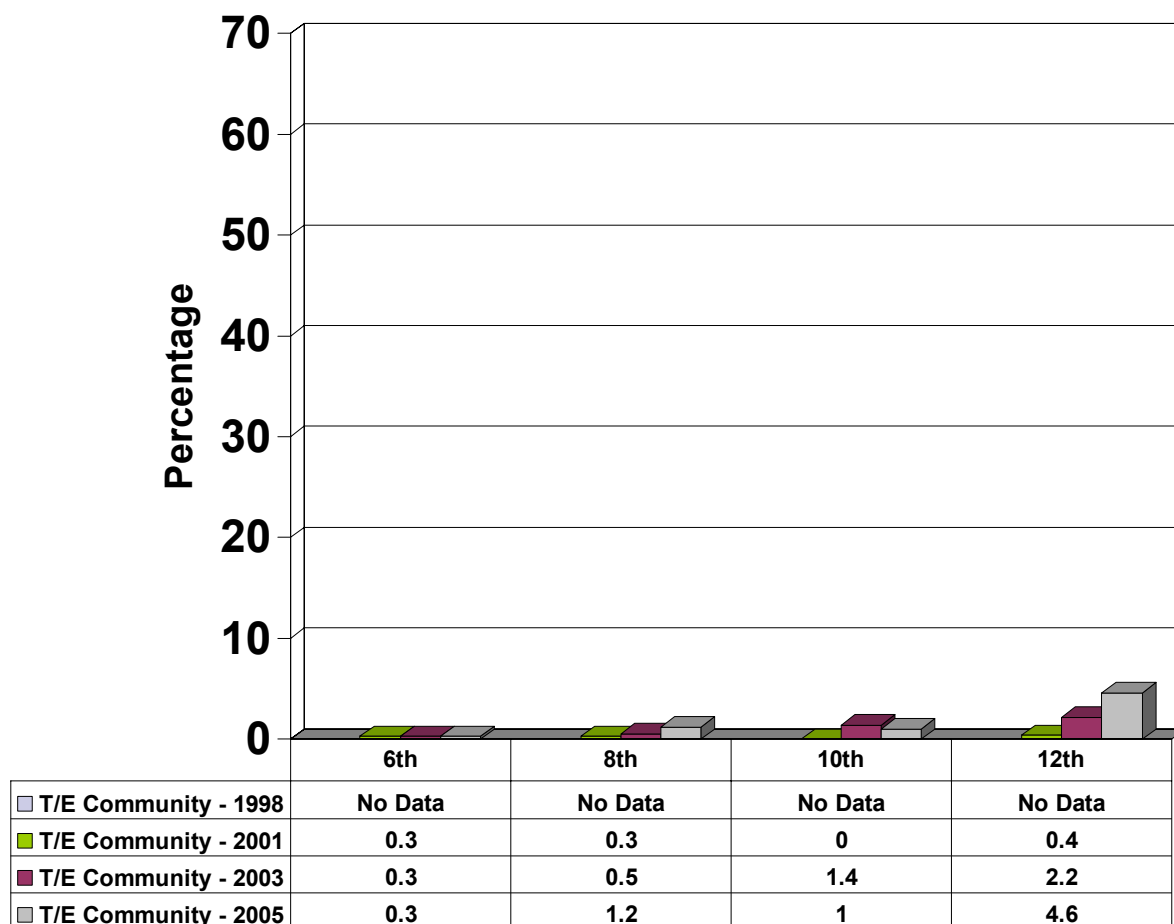
	6th	8th	10th	12th
T/E Community - 1998	0	0	0.4	0.4
T/E Community - 2001	0	0	0	0.4
T/E Community - 2003	0	0.2	1.2	1.2
T/E Community - 2005	0	0.5	0.5	3.1

Hallucinogens Past 30-Day Use: 1998, 2001, 2003, 2005

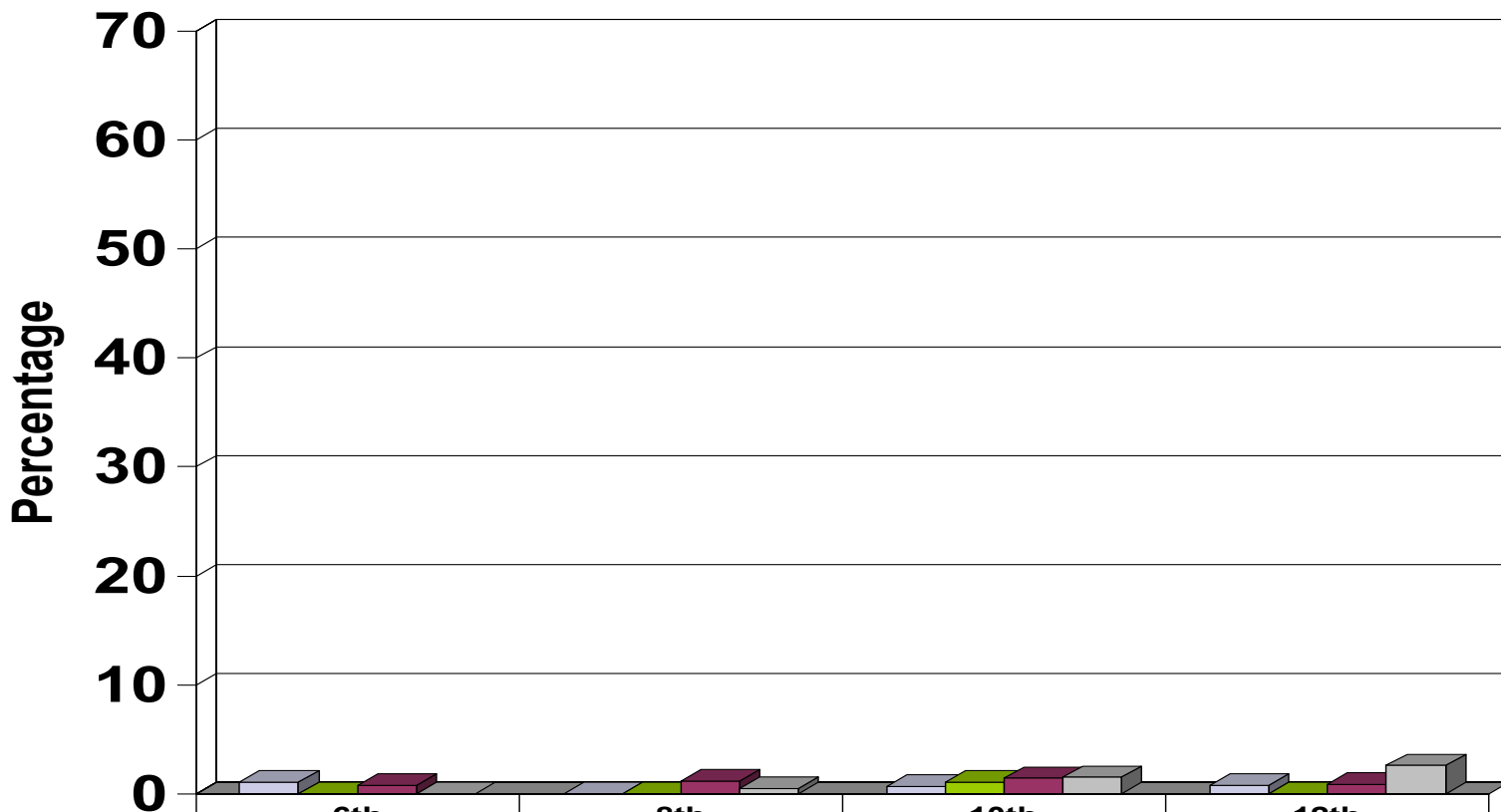


	6th	8th	10th	12th
T/E Community - 1998	0	1.2	5	3.2
T/E Community - 2001	0	0	2.3	6
T/E Community - 2003	0.2	0.7	7.8	7.7
T/E Community - 2005	0.2	0.7	6.7	10

Methamphetamine Past 30-Day Use: 1998, 2001, 2003, 2005

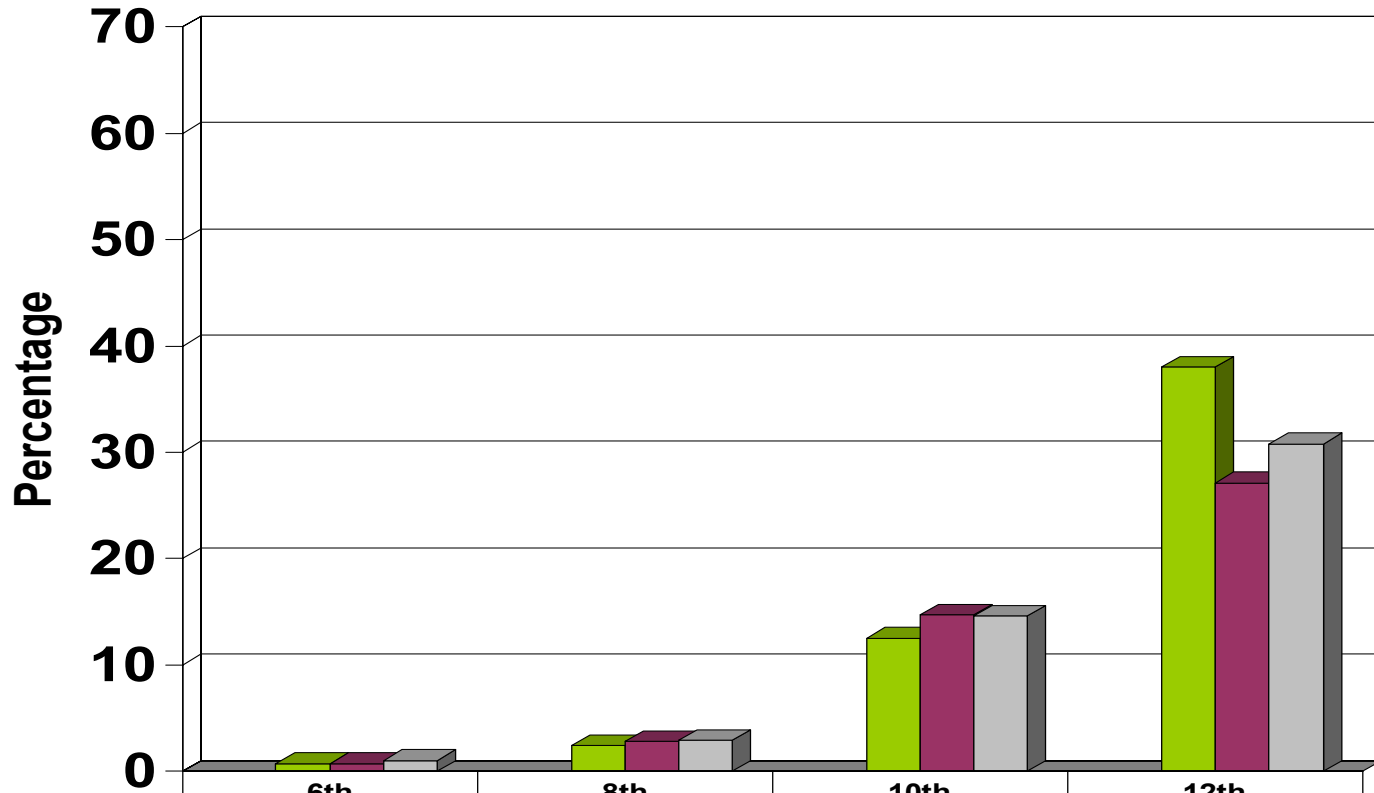


Steroids Past 30-Day Use: 1998, 2001, 2003, 2005



	6th	8th	10th	12th
T/E Community - 1998	1.1	0	0.7	0.8
T/E Community - 2001	0	0	1.1	0
T/E Community - 2003	0.8	1.2	1.4	0.9
T/E Community - 2005	0	0.5	1.5	2.6

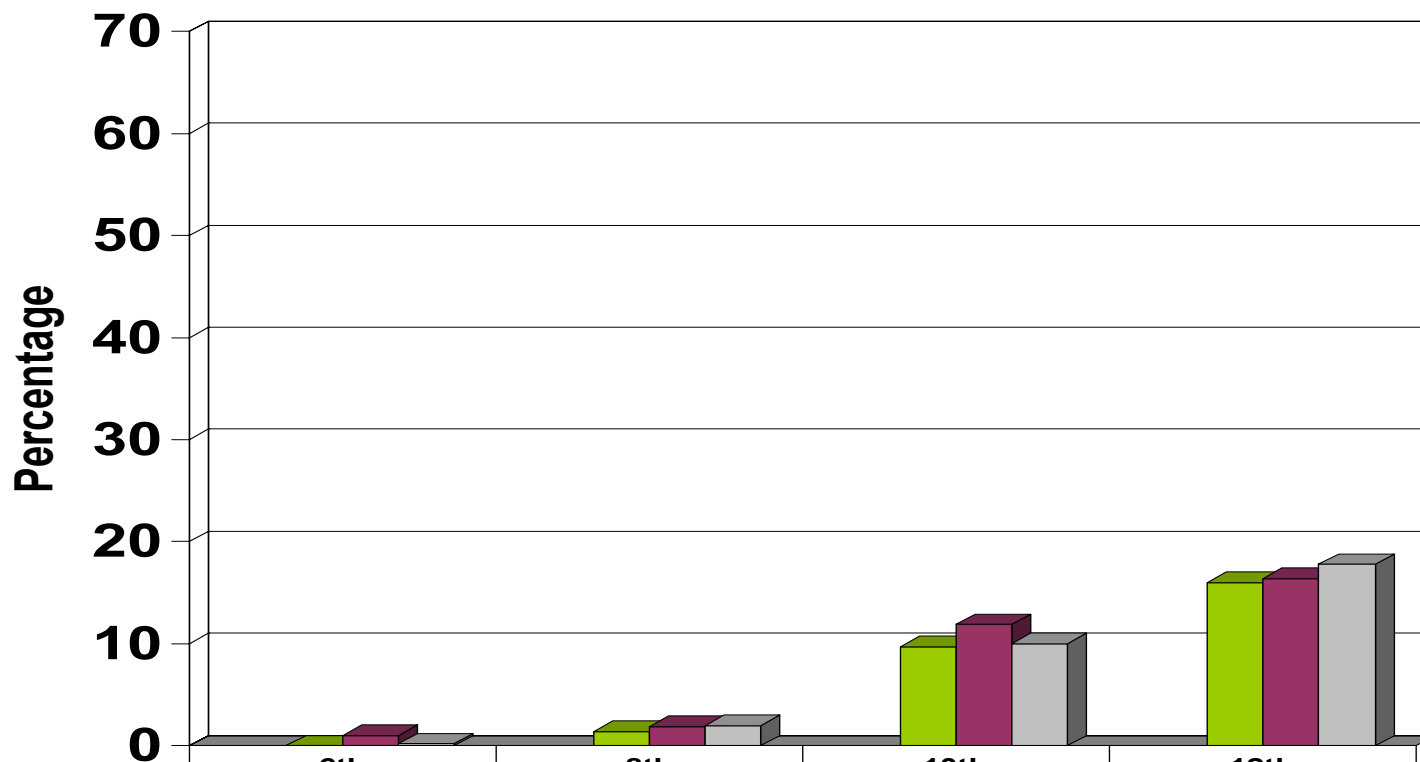
Being Drunk or High at School*: Past 12 Months 2001, 2003, 2005



	6th	8th	10th	12th
T/E Community - 1998	No Data	No Data	No Data	No Data
T/E Community - 2001	0.7	2.4	12.5	38
T/E Community - 2003	0.7	2.8	14.7	27.1
T/E Community - 2005	1	2.9	14.6	30.8

* Please note that some respondents may interpret this item as during the school day, while others may include school-related activities beyond the school day.

Selling Drugs Past 12 Months: 1998, 2001, 2003, 2005



	6th	8th	10th	12th
□ T/E Community - 1998	No Data	No Data	No Data	No Data
■ T/E Community - 2001	0	1.4	9.7	16
■ T/E Community - 2003	1	1.9	11.9	16.4
■ T/E Community - 2005	0.2	2	10	17.8

Protective Factor Scale Scores T/E Community vs. Chester County

Higher Scores are Preferable

Protective Factors	6th	8th	10th	12 th	Overall	Change from 2003	County Overall
Community Domain							
Community Rewards for Pro-Social Involvement	65	54	46	44	52	0	48
Family Domain - Questions reflect youth's perceptions							
Family Attachment	73	55	50	49	57	n/a	54
Family Opportunities for Prosocial Involvement	71	55	50	49	56	n/a	54
Family Rewards for Prosocial Involvement	76	59	53	49	59	n/a	57
School Domain							
School Opportunities for Prosocial Involvement	68	65	68	64	66	+1	59
School Rewards for Prosocial Involvement	64	57	52	50	56	+2	50
Individual/Peer Domain							
Religiosity	60	57	52	46	54	-1	52
Belief in the Moral Order	78	64	50	47	60	-2	59

Risk Factor Scale Scores

T/E Community vs. Chester County

Lower Scores are Preferable

Risk Factors	6th	8th	10th	12th	Overall	Change from 2003	County Overall
Community Domain							
Low Neighborhood Attachment	29	39	46	50	41	-2	47
Community Disorganization	32	36	44	43	39	-2	46
Personal Transitions and Mobility	47	46	49	49	48	-1	53
Laws & Norms Favorable to Drug Use	21	32	53	65	43	0	46
Perceived Availability of Drugs	15	23	45	56	35	+1	34
Family Domain – Questions reflect youth's perceptions							
Poor Family Supervision	28	42	54	63	47	n/a	47
Poor Family Discipline	22	35	50	57	41	n/a	43
Family History of Antisocial Behavior	20	30	44	54	37	n/a	39
Parental Attitudes Favorable Toward ATOD Use	34	39	51	66	47	n/a	46
Parental Attitudes Favorable Toward Antisocial Behavior	38	45	51	56	57	n/a	48

Risk Factor Scale Scores

T/E Community vs. Chester County

Lower Scores are Preferable

Risk Factors	6th	8th	10th	12 th	Overall	Change from 2003	County Overall
School Domain							
Poor Academic Performance	39	44	42	42	42	0	46
Lack of Commitment to School	28	42	47	51	42	0	45
Peer & Individual Domain							
Rebelliousness	27	42	53	57	45	+4	44
Friends' Delinquent Behavior	34	38	47	51	42	+1	46
Friends' Use of Drugs	19	28	56	70	43	+1	41
Peer Rewards for Antisocial Behavior	31	39	65	70	51	0	47
Favorable Towards Antisocial Behavior	26	39	53	56	43	-2	44
Favorable Attitudes Towards ATOD Use	21	30	56	69	44	+1	40
Low Perceived Risks of Drug Use	22	24	41	51	34	+2	34
Early Initiation of Drug Use and Antisocial Behavior	21	27	44	48	35	0	34
Sensation Seeking	35	35	49	57	44	0	42

Strengths to Build On

- **Protective Factor** scale scores (higher scores are preferable):
 - All scores continue to be over 60 points for 6th graders
 - All scores continue to be over 50 points for 8th graders
 - “School Opportunities for Prosocial Involvement” at 64 points or higher for all surveyed grades
 - “School Rewards for Prosocial Involvement” at 50 points or higher for all surveyed grades



Strengths to Build On

- **Risk Factor** scale scores (lower scores are preferable):
 - “Community Disorganization” 44 points or lower for all surveyed grades
 - “Poor Academic Performance” 44 points or lower for all surveyed grades



Challenges to Address

- **Protective Factor** scale scores (higher scores are preferable):
 - “Community Rewards for Prosocial Involvement” reaches a low of 44 points for 12th graders

Challenges to Address

- **Risk Factor** scale scores (lower scores are preferable):
 - “Parental Attitudes Favorable Towards Antisocial Behaviors” at 57 points overall
 - “Parental Attitudes Favorable Towards ATOD Use” at 69 points for 12th graders
 - “Friends Use of Drugs” at 56 and 70 points 10th and 12th graders, respectively.
 - “Peer Rewards for Antisocial Behavior” at 65 and 70 points 10th and 12th graders, respectively.



What Additional Community Initiatives Are Being Implemented

- Formation of SADD Chapter at T/E and Valley Forge Middle Schools
 - Early Initiation of Drug Use and Antisocial Behavior (Risk)
 - Friends' Use of Drugs (Risk)
 - Peer Rewards for Antisocial Behavior (Risk)
 - Favorable Attitudes toward ATOD Use (Risk)



What Additional Community Initiatives Are Being Implemented

- Priority on Community Mobilization Efforts to address:
 - Community Rewards for Prosocial Involvement (Protective)
 - Belief in the Moral Order (Protective)
 - **Laws & Norms Favorable to Drug Use (Risk)**



What Additional Community Initiatives Are Being Implemented

- Implementation of Social Norming Campaign
 - Friends' Use of Drugs (Risk)
 - Favorable Attitudes toward ATOD Use (Risk)
 - Early Initiation of Drug Use and Antisocial Behavior (Risk)



Community Action Steps

- Implement ARCH Party Guidelines in Your Home
 - Parents' attitudes about alcohol, tobacco and other drugs (Risk)



Community Action Steps

- Work with ARCH to Establish SAFE HOME Parent Networks
 - Parents' attitudes about alcohol, tobacco and other drugs (Risk)
 - Parents' attitudes about antisocial behavior (Risk)



Community Action Steps

- Involve Your Community Organization in Prevention Efforts
 - Community Rewards for Pro-Social Involvement (Protective)
 - **Laws & Norms Favorable to Drug Use (Risk)**
 - Belief in the Moral Order (Protective)

Community Action Steps

- Participate in *ARCH Cares* ListServ
 - Sign up at <http://groups.yahoo.com/group/archcares/>
 - Parents' attitudes about alcohol, tobacco and other drugs (Risk)
 - Parents' attitudes about antisocial behavior (Risk)



Community Action Steps

- Participate in ARCH Roundtable
Discussions on January 18th, 7:30pm at
Upper Main Line YMCA
- Attend an ARCH meeting, held the first
Wednesday of each month at 8:30am at
the Education Services Center



Tredyffrin/Easttown Community

Overview of 2005 PA Youth Survey Results

November 6, 2006