



# Tredyffrin/Easttown Community

Overview of 2005 PA Youth Survey Results

November 6, 2006



# Goals of PA Youth Survey

- Provide a benchmark for alcohol, tobacco and other drug use and delinquent behavior
- Provide data to drive intervention programs

# Participants

- All 12 Chester County School Districts, plus 2 Centers for Arts & Technology participated
- In the Fall of 2005, youth in grades 6, 8, 10 and 12 were surveyed, including:
  - 1,642 in the T/E community
  - 15,530 in Chester County
  - Over 100,000 In Pennsylvania



# PA Youth Survey Methodology

- Survey is administered in a classroom setting
- Participation is voluntary, anonymous and confidential
- Four strategies were used to ensure validity and surveys were excluded if
  - Youth exaggerated their drug use
  - Youth exaggerated frequency of antisocial behavior
  - Youth reported use of fictitious drug
  - Youth reported logically inconsistent substance use



# Additional Indicators of Survey Validity

- Results have been consistent over time
- Results are similar to districts with similar demographics
- In longitudinal studies, participants confirm their earlier responses



# PA Youth Survey: New This Year

- Depression questions added
- Prescription drug questions added
- T/E chose to add family domain questions



# Risk Factors

- Conditions that increase the likelihood of a young person becoming involved in at-risk behavior
- Ex: Parental attitudes favorable toward alcohol, tobacco and drug use



# Protective Factors

- Conditions that buffer youth from exposure to risk by either:
  - Reducing the impact of the risk
  - Changing the way young people respond to risk
- Ex: Belief in the Moral Order





# Risk and Protective Factor Domains

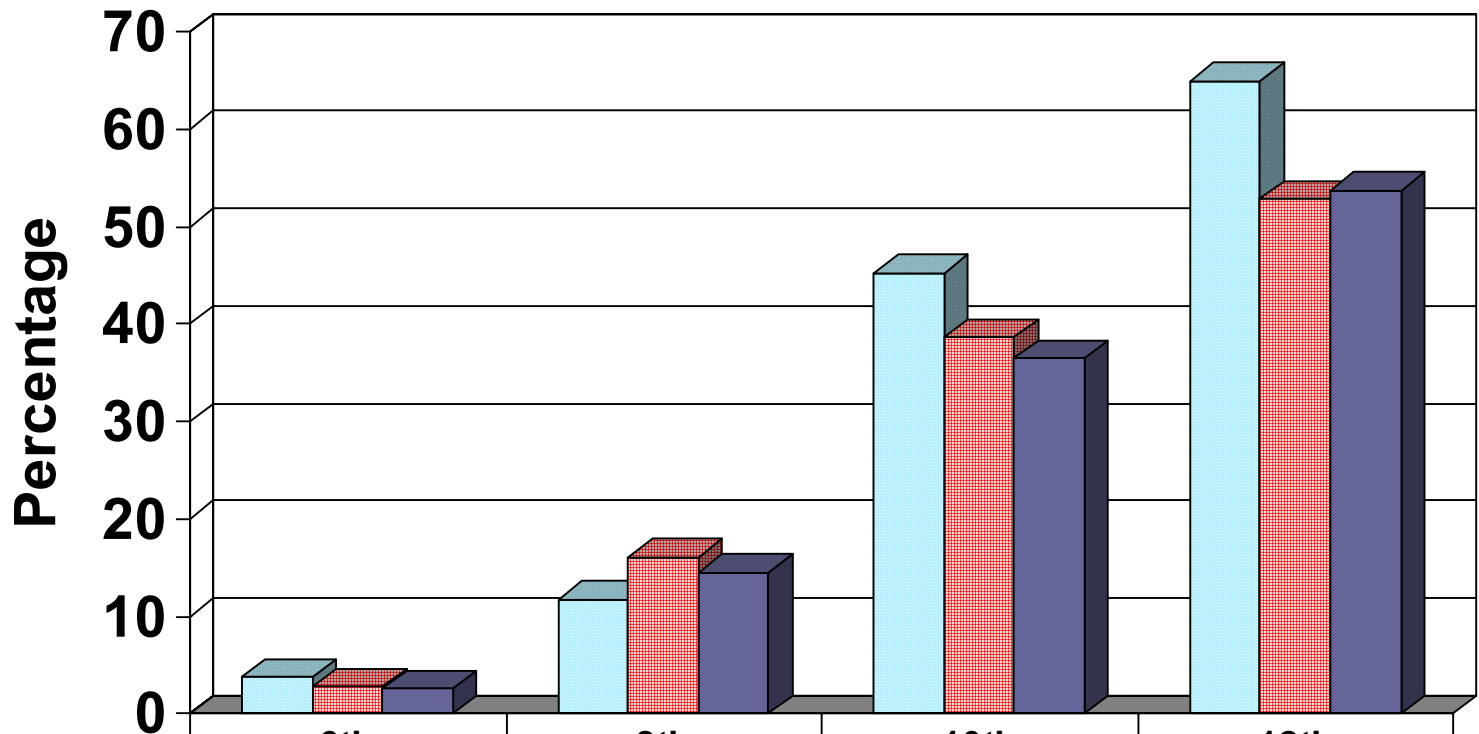
- Community
- Family
- School
- Individual and Peer


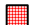



# Alcohol, Tobacco and Other Drugs: Notable Results

- Alcohol continues to be the primary substance of abuse among our youth
- Binge drinking continues to be a concern among older youth
- Cigarette use continues to decline in all grades
- 12<sup>th</sup> graders in T/E reported 30-day recreational use of prescription drugs at rates higher than those of 12<sup>th</sup> graders statewide

# Alcohol: Past 30-Day Use



 T/E Community	3.8	11.8	45.2	64.9
 Chester County	2.8	16.1	38.6	52.8
 Pennsylvania	2.6	14.5	36.5	53.7

*88% of 8<sup>th</sup> graders surveyed had not used alcohol in the past 30 days.*

*55% of 10<sup>th</sup> graders surveyed had not used alcohol in the past 30 days.*

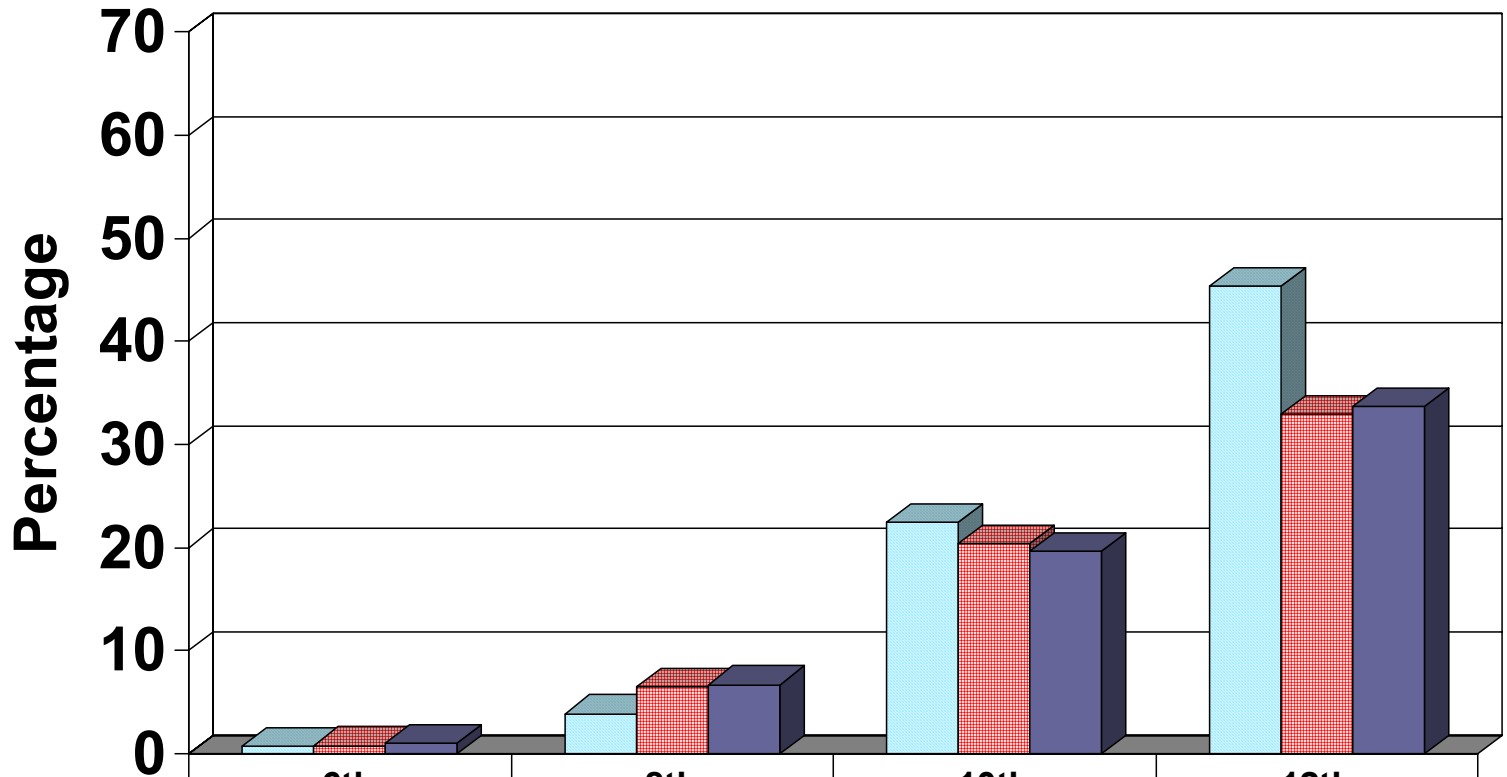







# Binge Drinking

Binge drinking is defined as consuming five or more drinks in a row.

# Binge Drinking: Past 2 Weeks



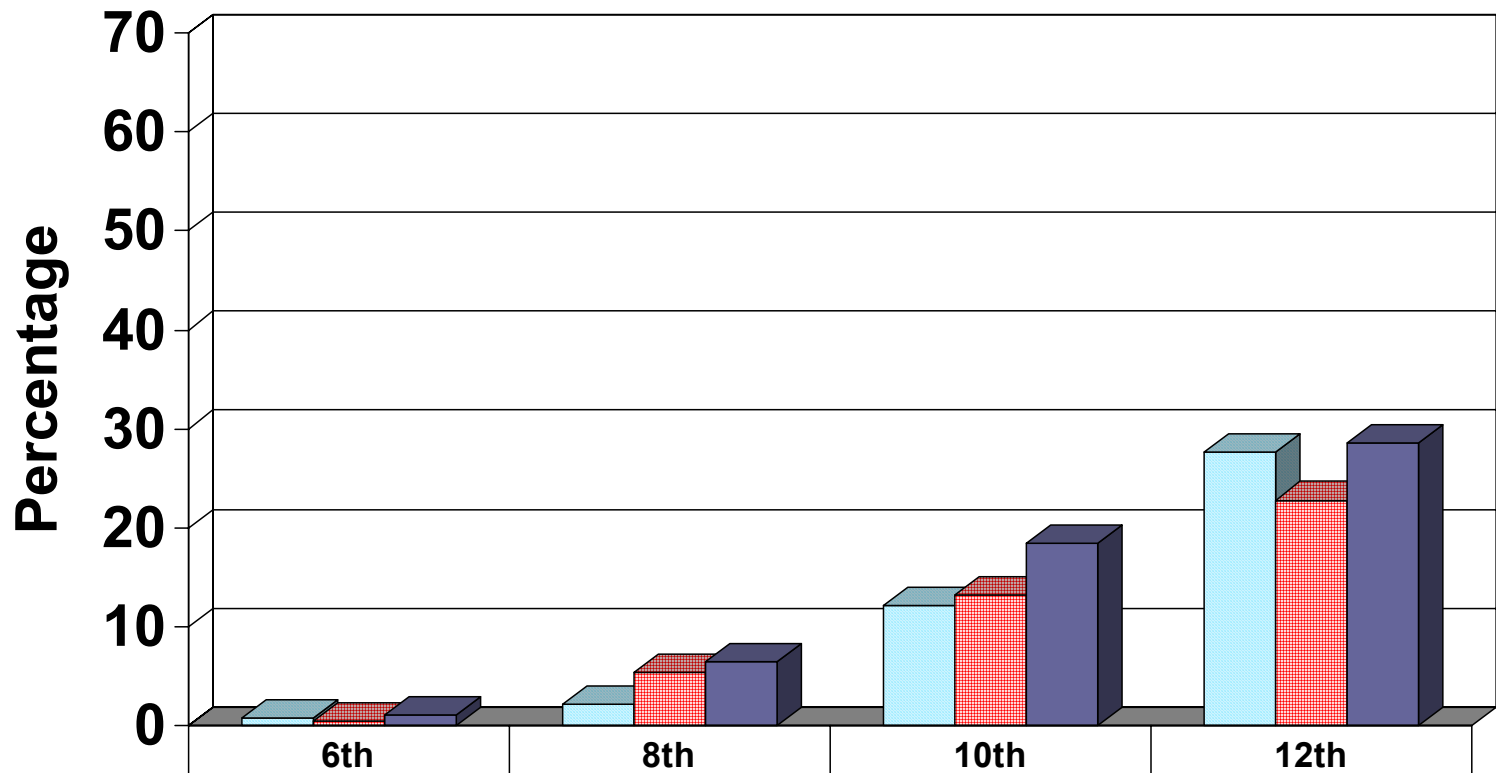
 T/E Community	0.7	3.9	22.5	45.4
 Chester County	0.8	6.5	20.4	32.9
 Pennsylvania	1	6.7	19.6	33.7




*96% of 8<sup>th</sup> graders surveyed had not participated in binge drinking in the past 30 days.*

*55% of 12<sup>th</sup> graders surveyed had not participated in binge drinking in the past 30 days.*



# Tobacco: Past 30-Day Use



 T/E Community	0.7	2.2	12.1	27.6
 Chester County	0.4	5.4	13.2	22.8
 Pennsylvania	1	6.4	18.4	28.5

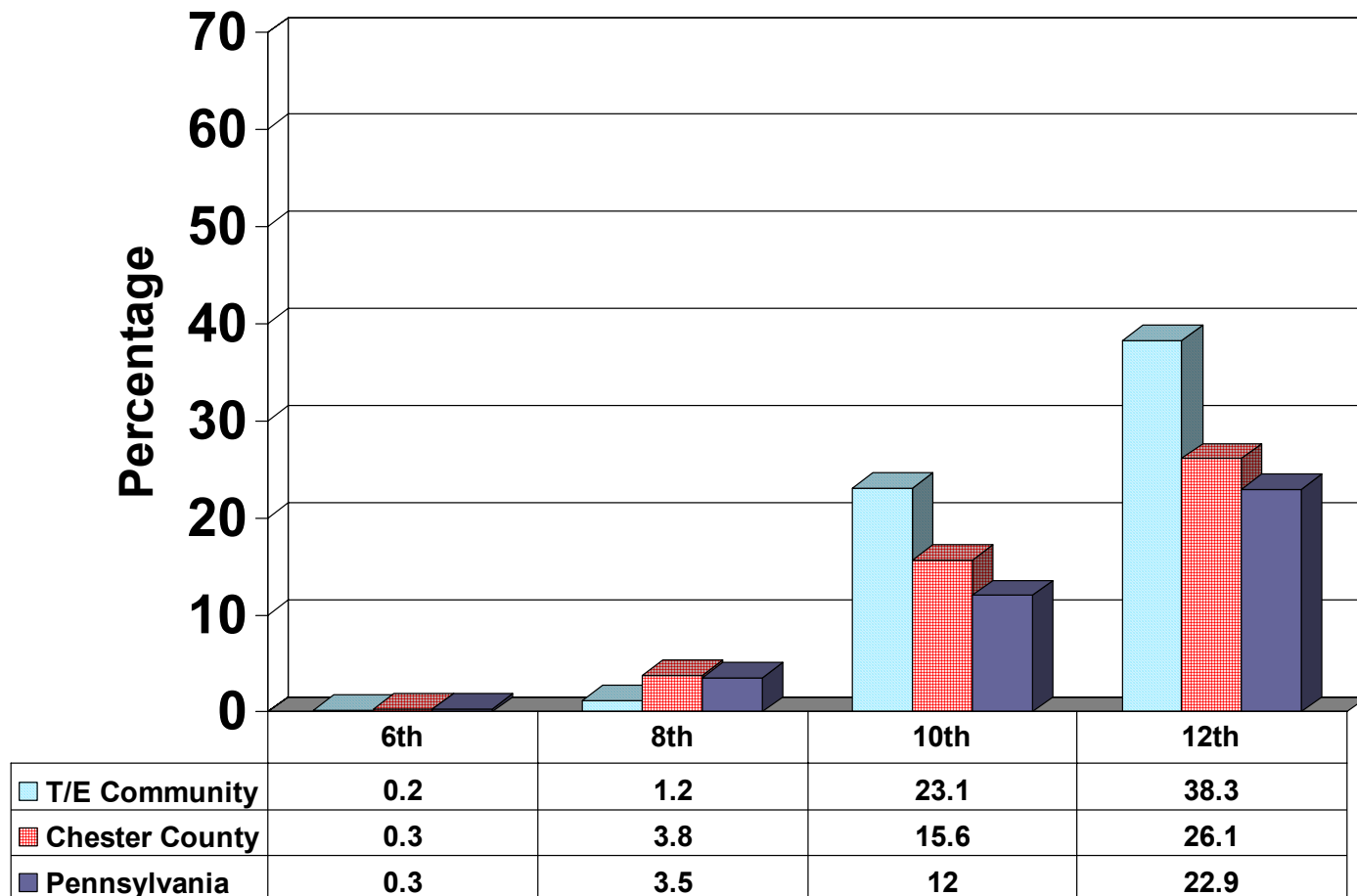


*98% of 8<sup>th</sup> graders surveyed had not used tobacco in the past 30 days.*

*72% of 12<sup>th</sup> graders surveyed had not used tobacco in the past 30 days.*



# Marijuana: Past 30-Day Use

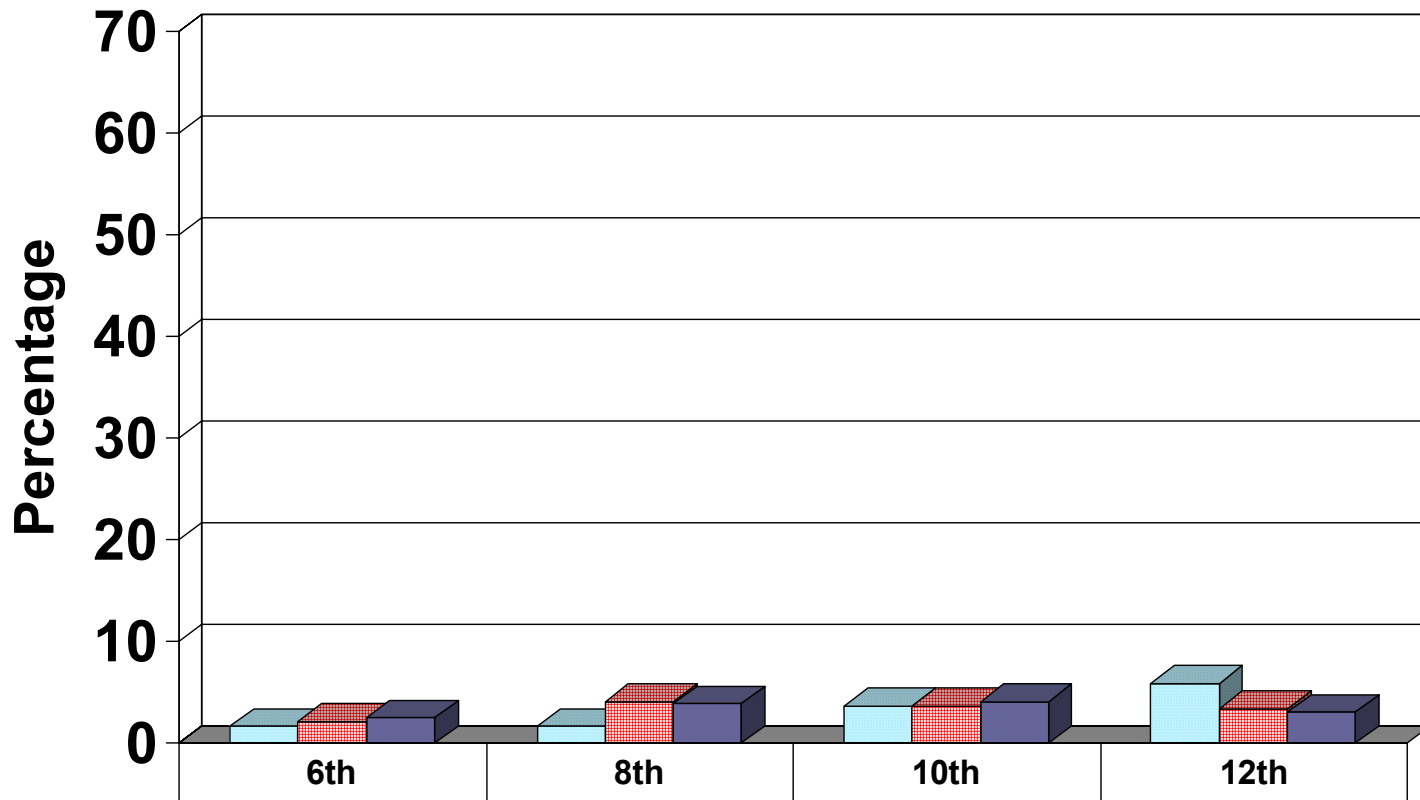


*99% of 8<sup>th</sup> graders surveyed had not used marijuana in the past 30 days.*

*62% of 12<sup>th</sup> graders surveyed had not used marijuana in the past 30 days.*

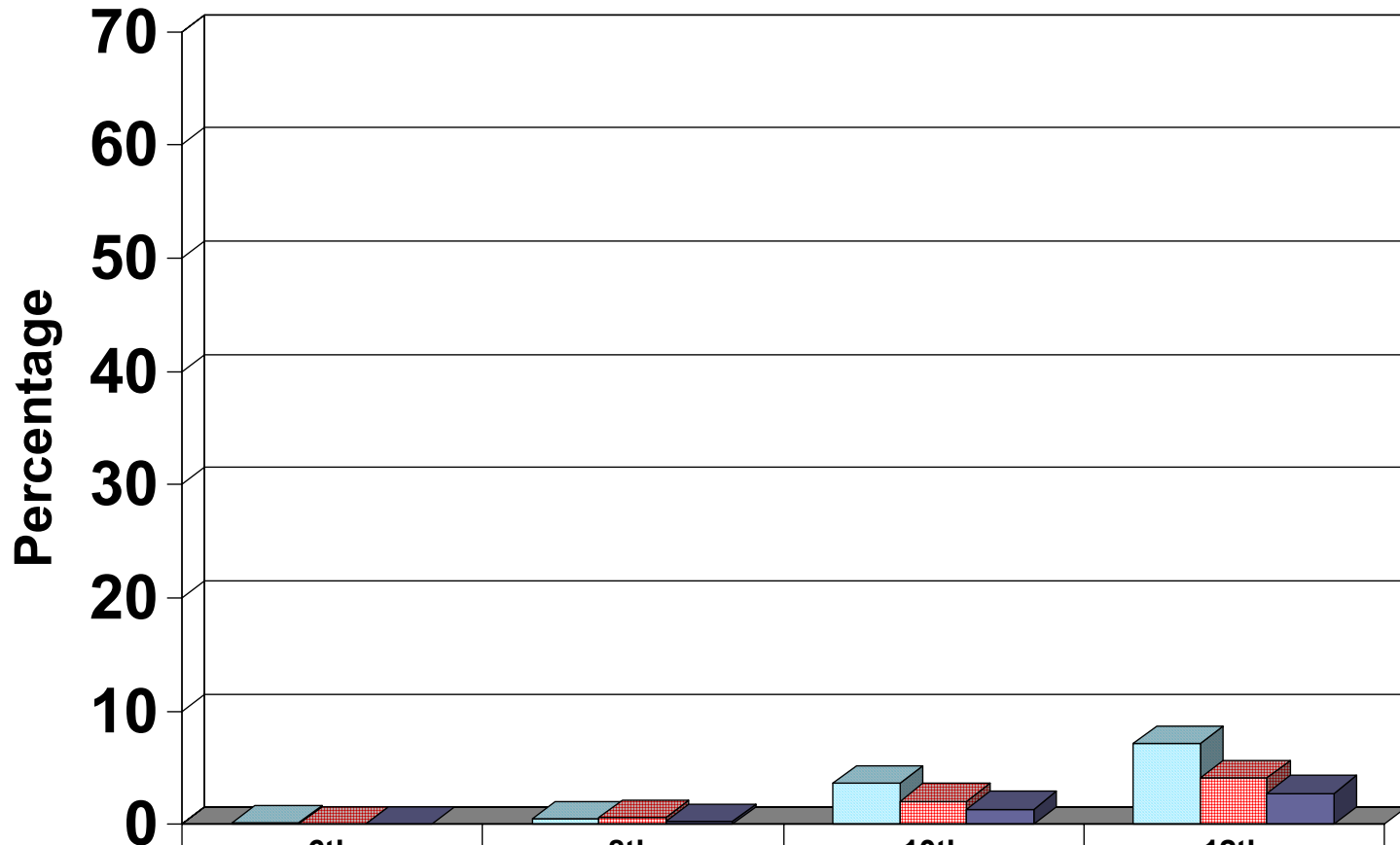


# Inhalants: Past 30-Day Use



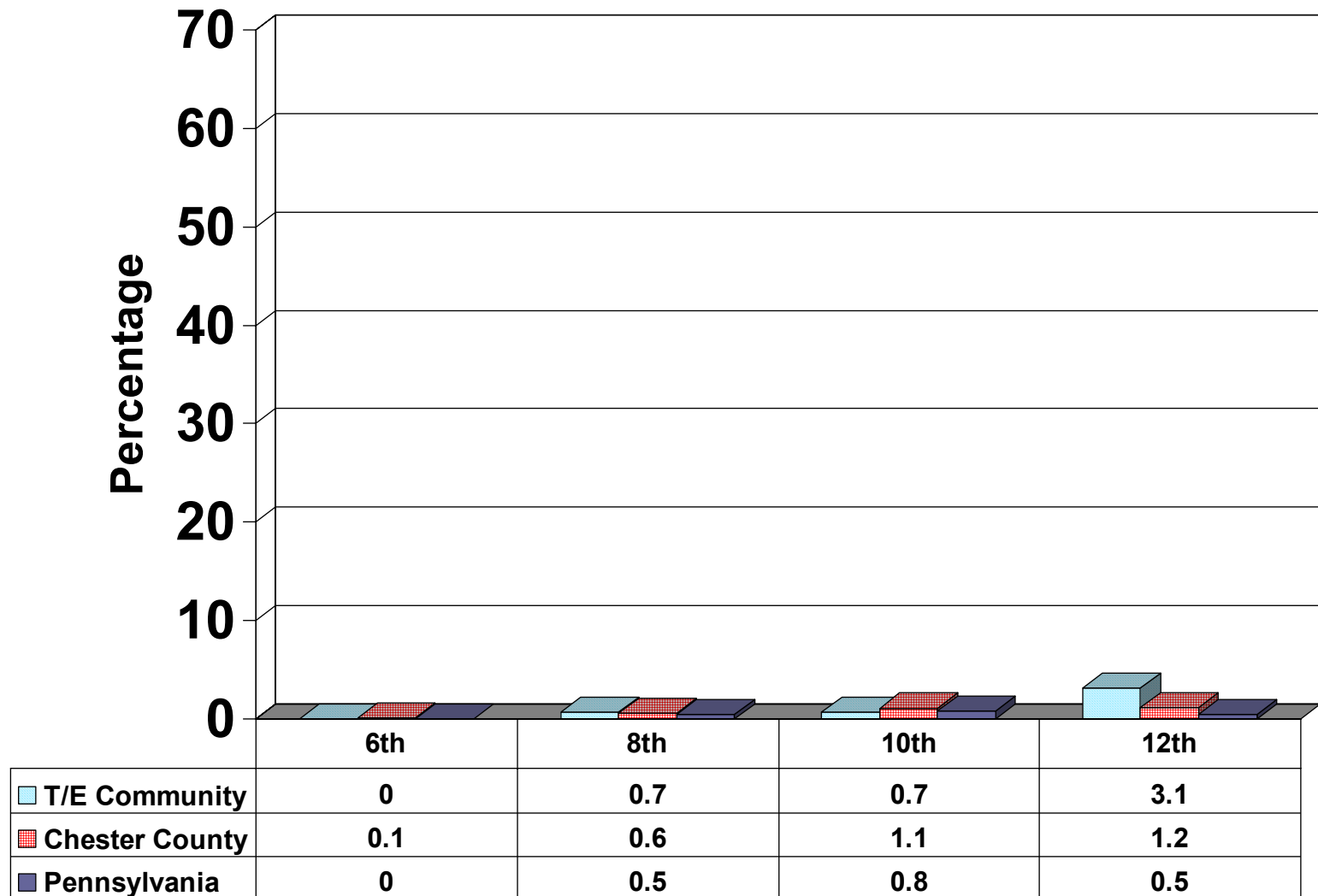
T/E Community	1.7	1.7	3.7	5.9
Chester County	2.2	4.1	3.7	3.4
Pennsylvania	2.5	3.9	4.1	3.1

# Cocaine: Past 30-Day Use

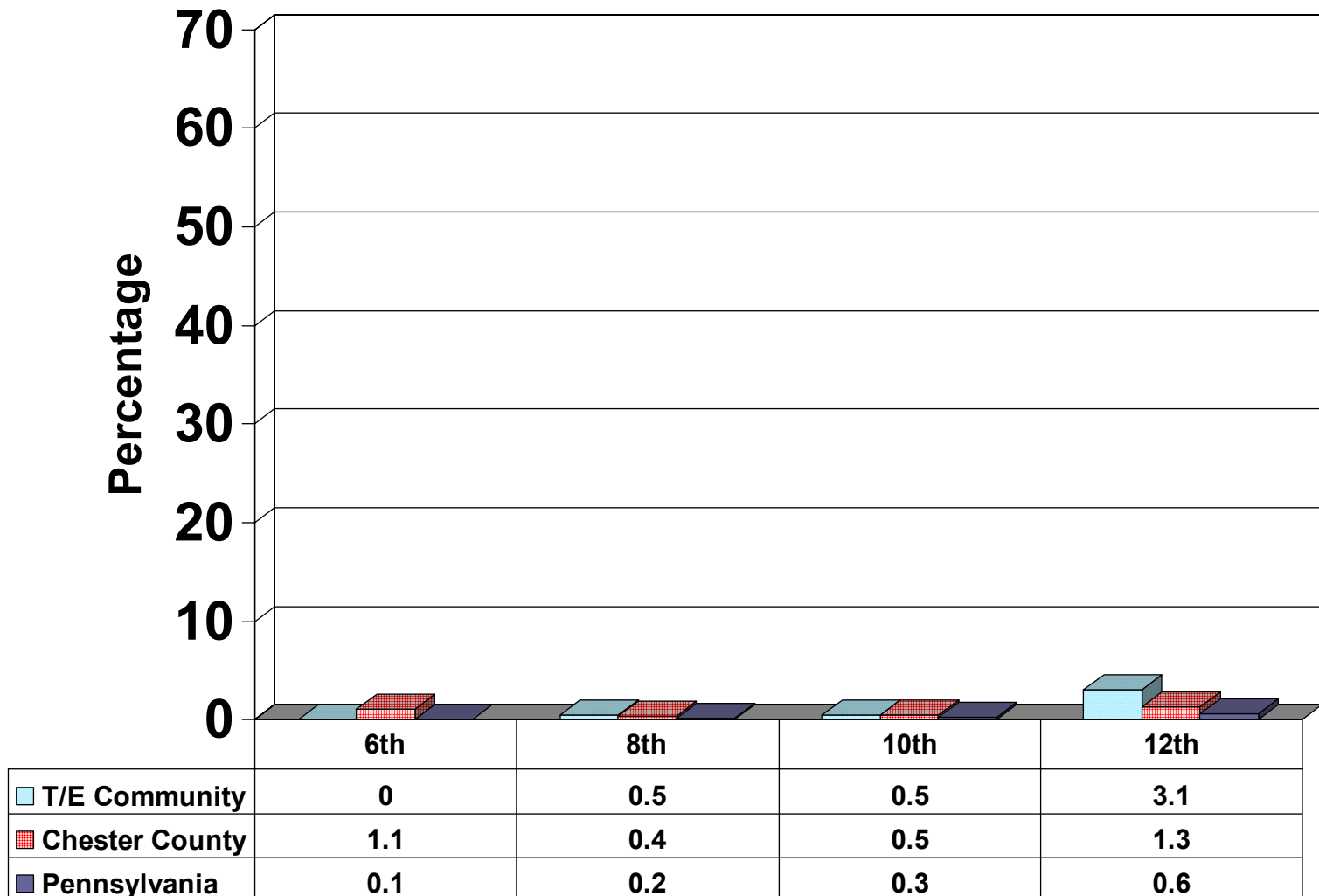


	6th	8th	10th	12th
T/E Community	0.2	0.5	3.7	7.2
Chester County	0.1	0.6	2.1	4.1
Pennsylvania	0	0.3	1.4	2.8

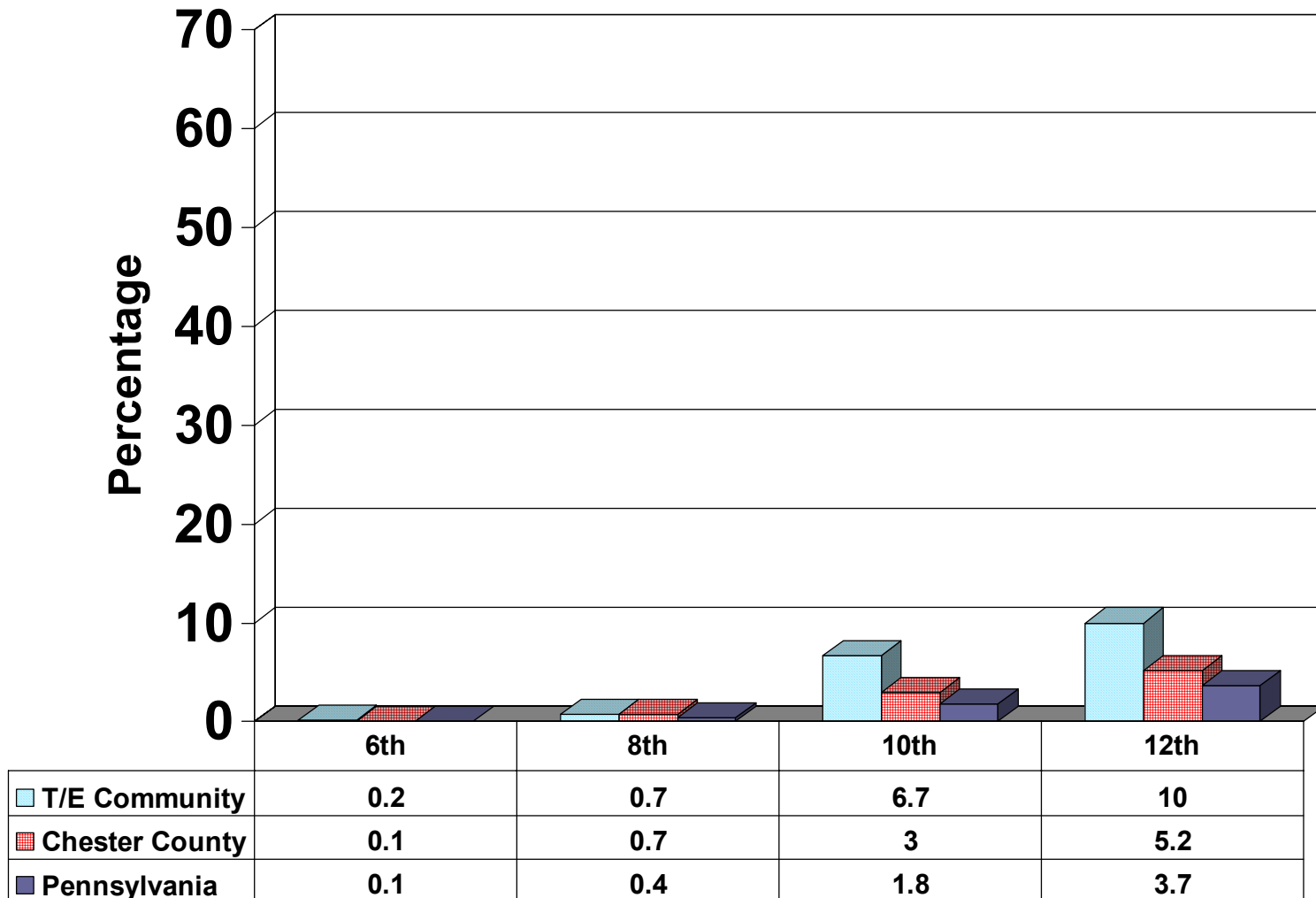
# Crack Cocaine: Past 30-Day Use



# Heroin: Past 30-Day Use

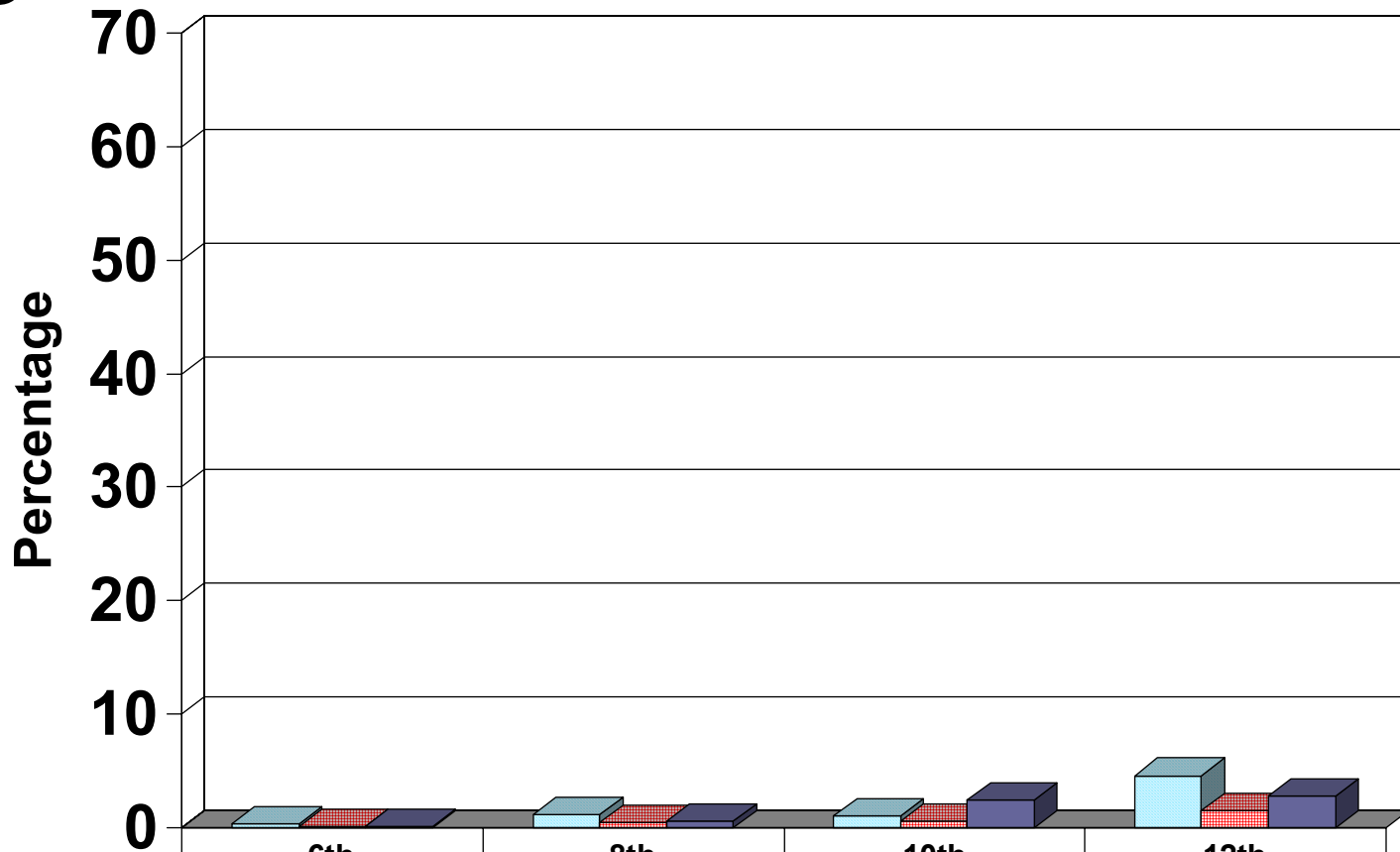


# Hallucinogens: Past 30-Day Use



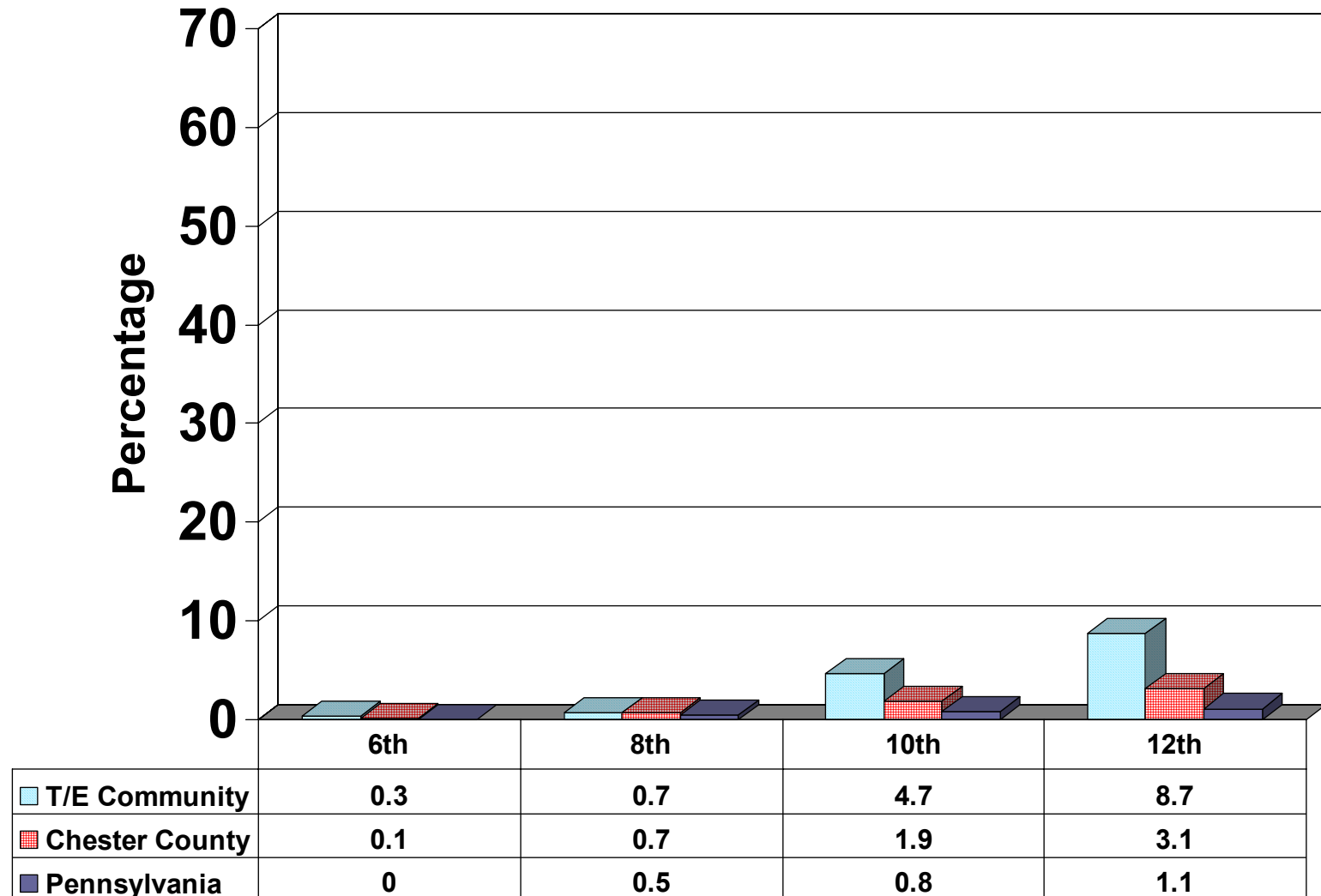


# Methamphetamine: Past 30-Day Use

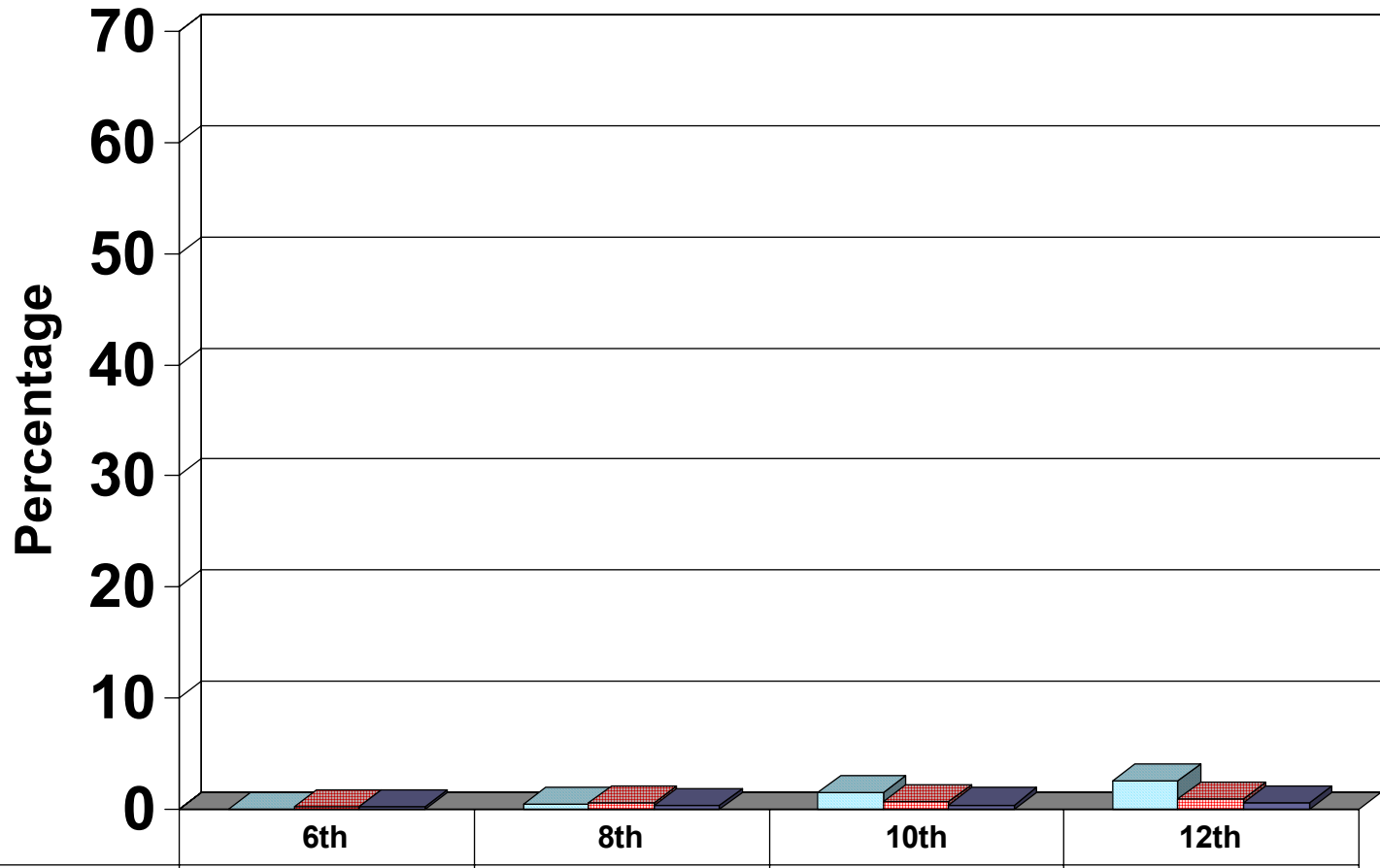


	6th	8th	10th	12th
T/E Community	0.3	1.2	1	4.6
Chester County	0.1	0.5	0.6	1.5
Pennsylvania	0.1	0.6	2.4	2.8

# Ecstasy: Past 30-Day Use

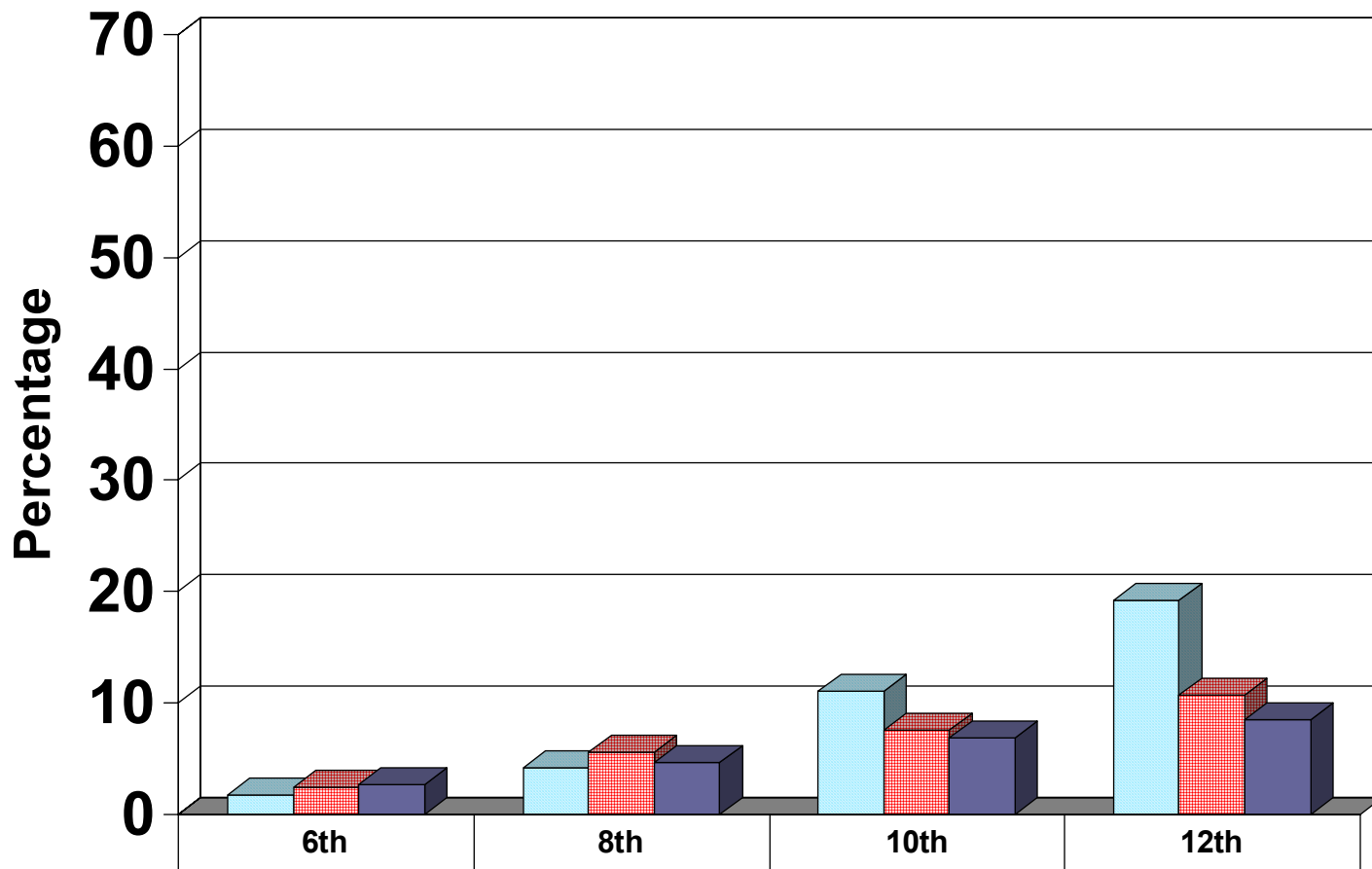


# Steroids: Past 30-Day Use



T/E Community	0	0.5	1.5	2.6
Chester County	0.2	0.6	0.7	0.9
Pennsylvania	0.2	0.3	0.4	0.6

# Any Illicit Drug: Past 30-Day Use



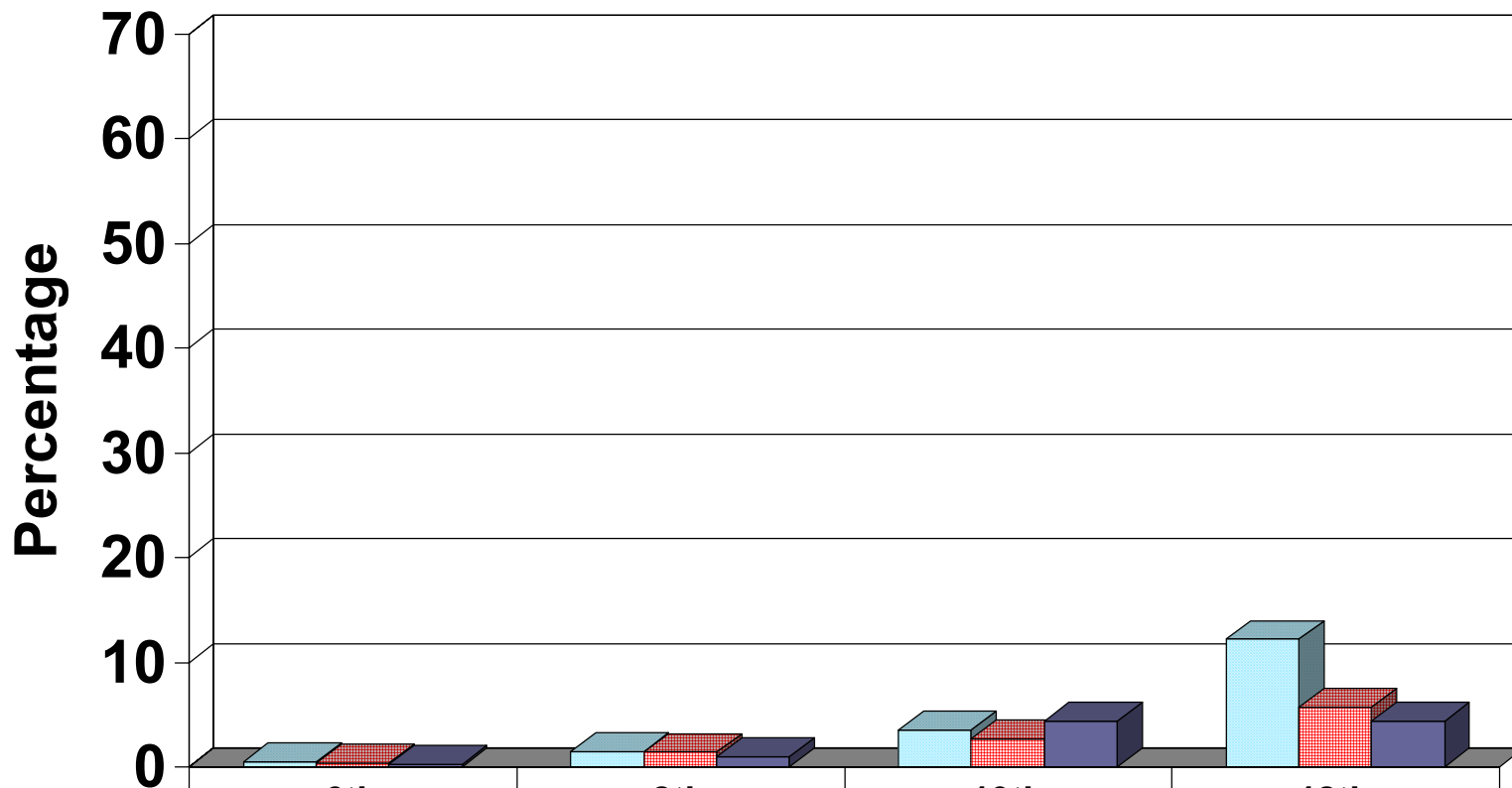
T/E Community	1.7	4.2	11.1	19.2
Chester County	2.4	5.6	7.6	10.7
Pennsylvania	2.7	4.7	6.9	8.5



# Prescription Drugs: Amphetamines

- Uppers
- Bennies
- Pep pills
- Diet pills

# Prescription Drugs: Amphetamines Past 30-Day Use



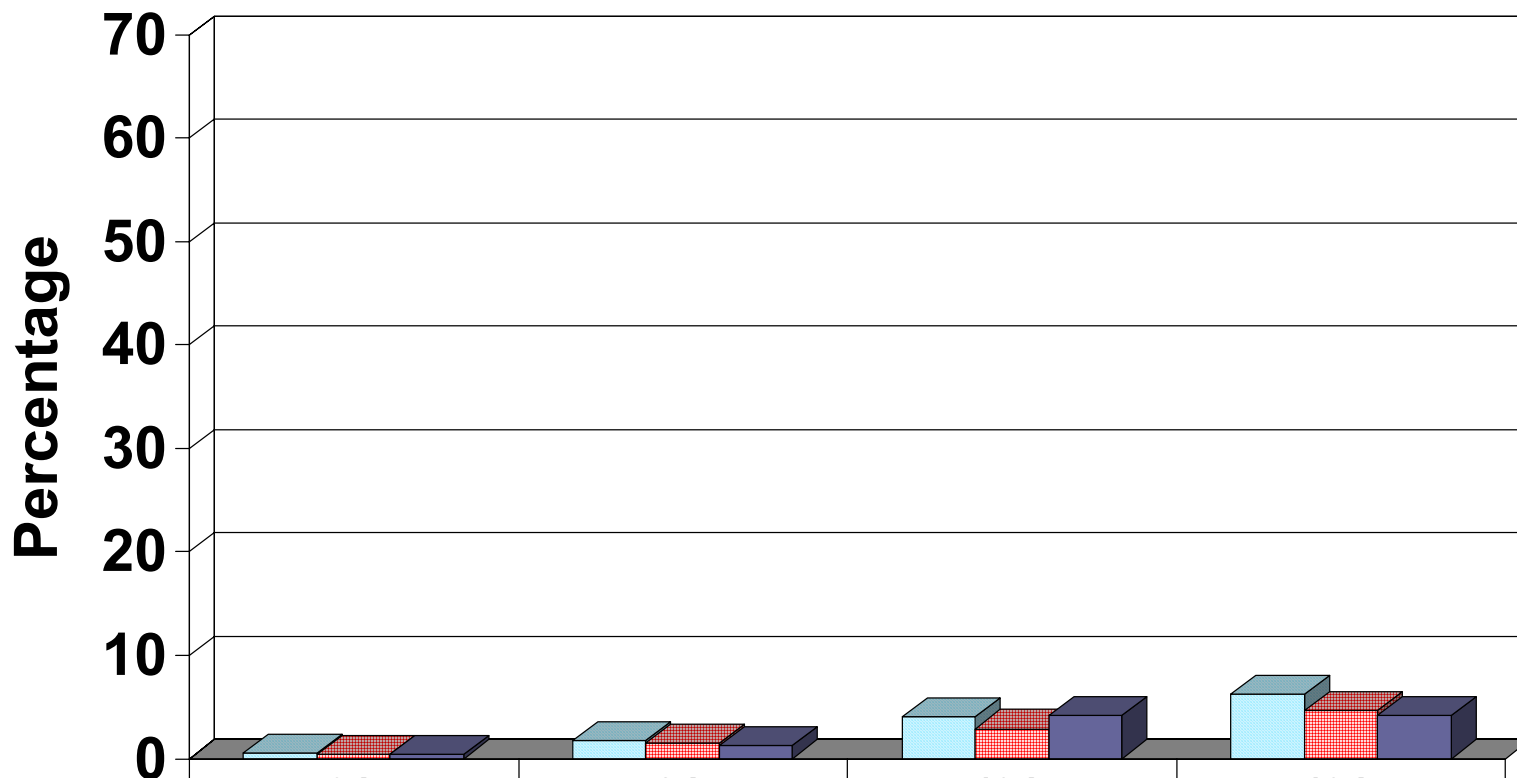
	6th	8th	10th	12th
T/E Community	0.5	1.5	3.5	12.2
Chester County	0.4	1.4	2.7	5.7
Pennsylvania	0.3	1	4.4	4.4



# Prescription Drugs: Sedatives

- Phenobarbital
- Tuinal
- Nembutal
- Seconal

# Prescription Drugs: Sedatives Past 30-Day Use



	6th	8th	10th	12th
T/E Community	0.5	1.7	4	6.2
Chester County	0.4	1.5	2.9	4.7
Pennsylvania	0.4	1.3	4.2	4.2

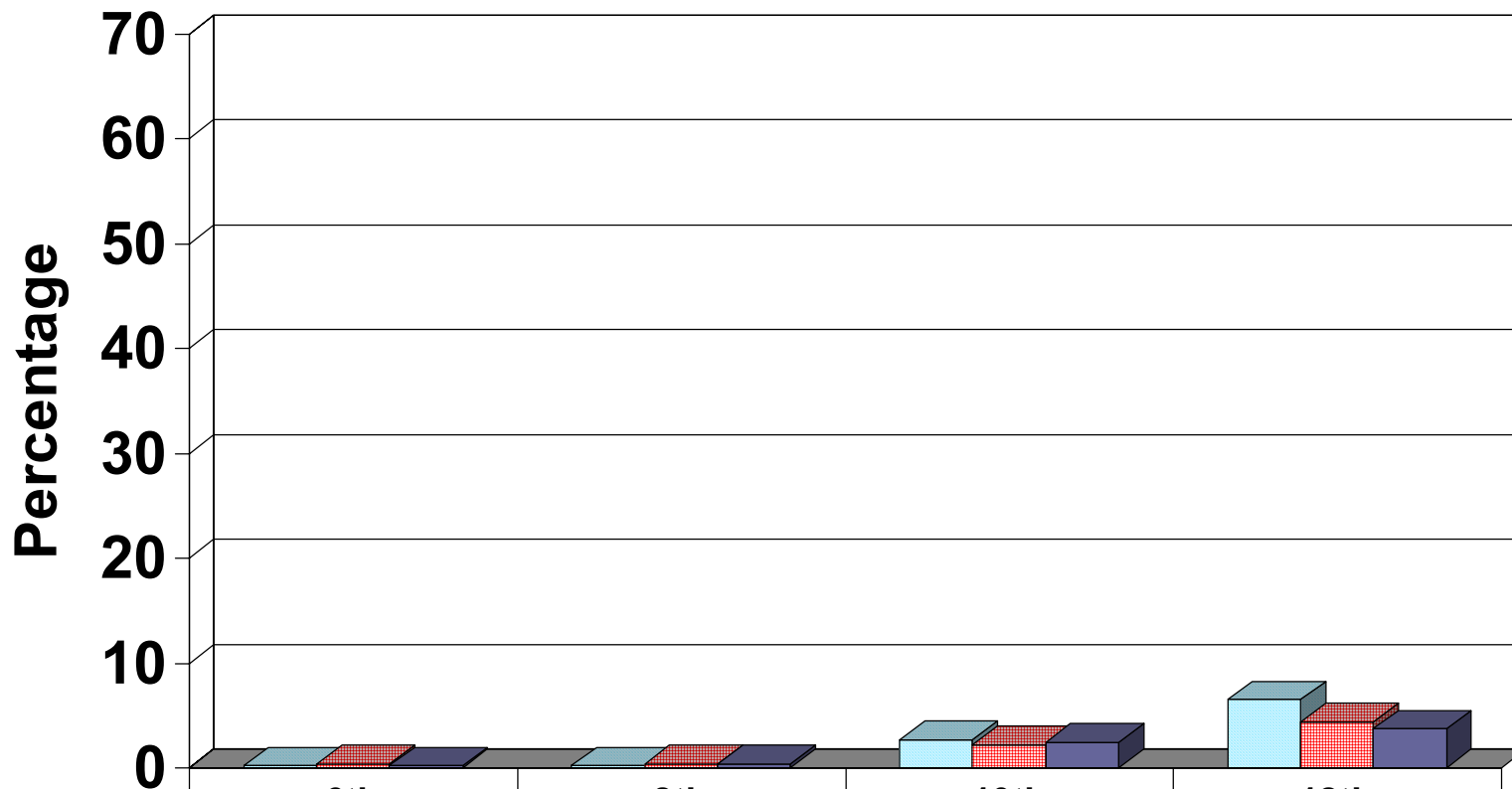




# Prescription Drugs: Tranquilizers

- Librium
- Valium
- Xanax

# Prescription Drugs: Tranquilizers Past 30-Day Use



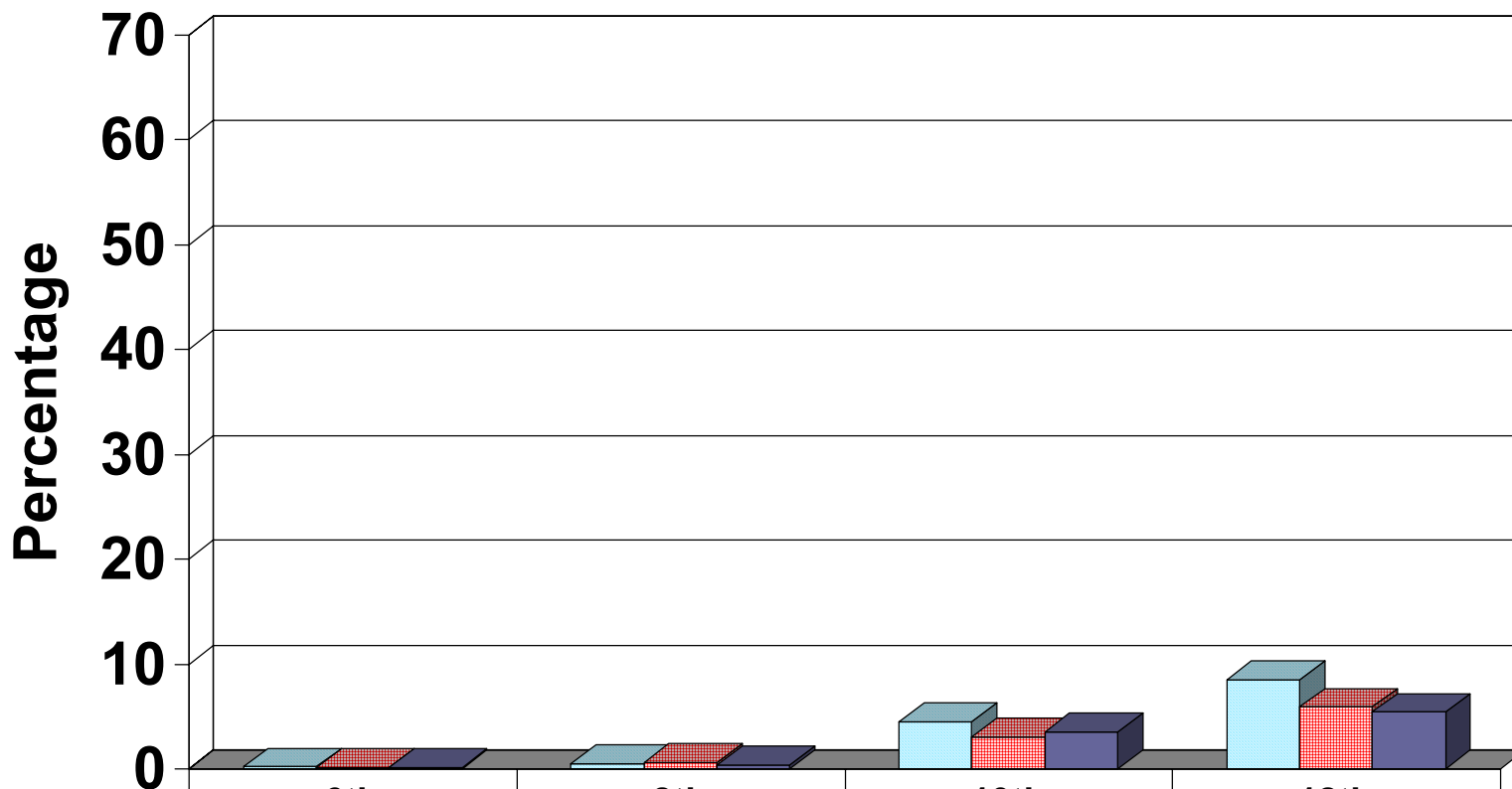
	6th	8th	10th	12th
T/E Community	0.2	0.2	2.7	6.5
Chester County	0.4	0.4	2.2	4.4
Pennsylvania	0.2	0.4	2.4	3.7



# Prescription Drugs: Narcotics

- Methadone
- Morphine
- Codeine
- Demerol
- Vicodin
- OxyContin
- Percocet

# Prescription Drugs: Narcotics Past 30-Day Use



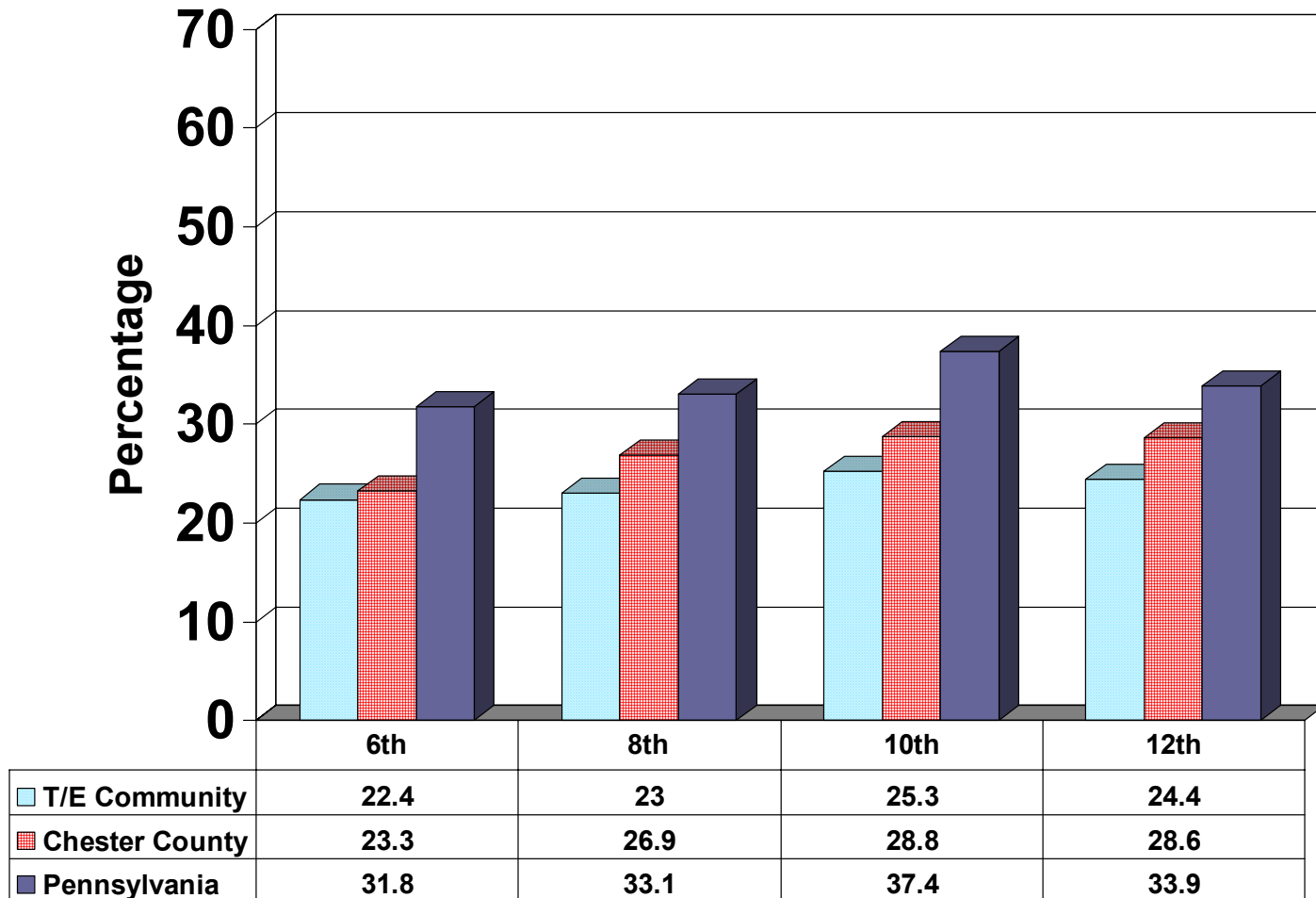
	6th	8th	10th	12th
T/E Community	0.2	0.5	4.5	8.5
Chester County	0.1	0.6	3	5.9
Pennsylvania	0.1	0.4	3.5	5.4



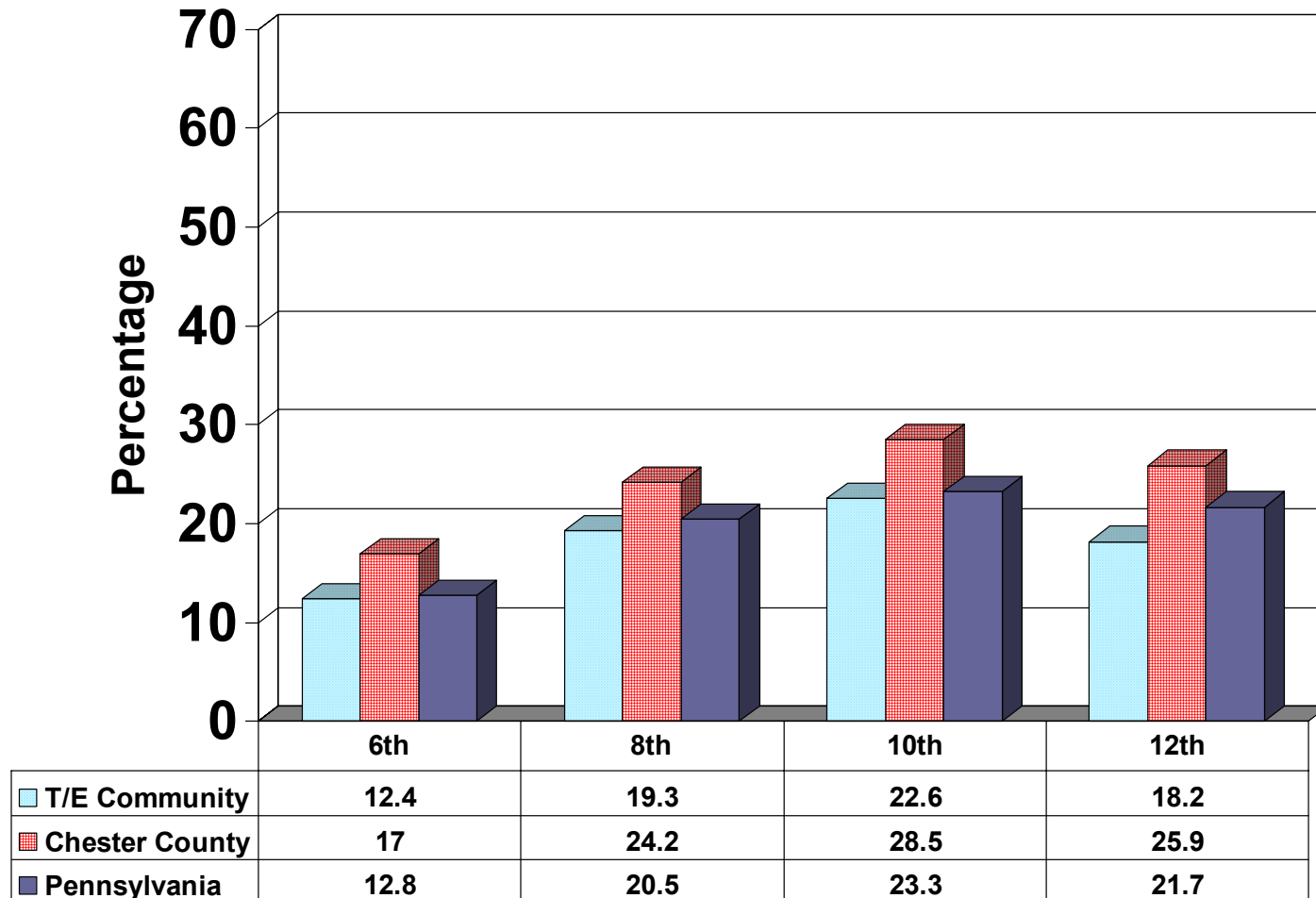
# Depression: Past Year

- Four questions asked about feelings of sadness, hopelessness, and worthlessness

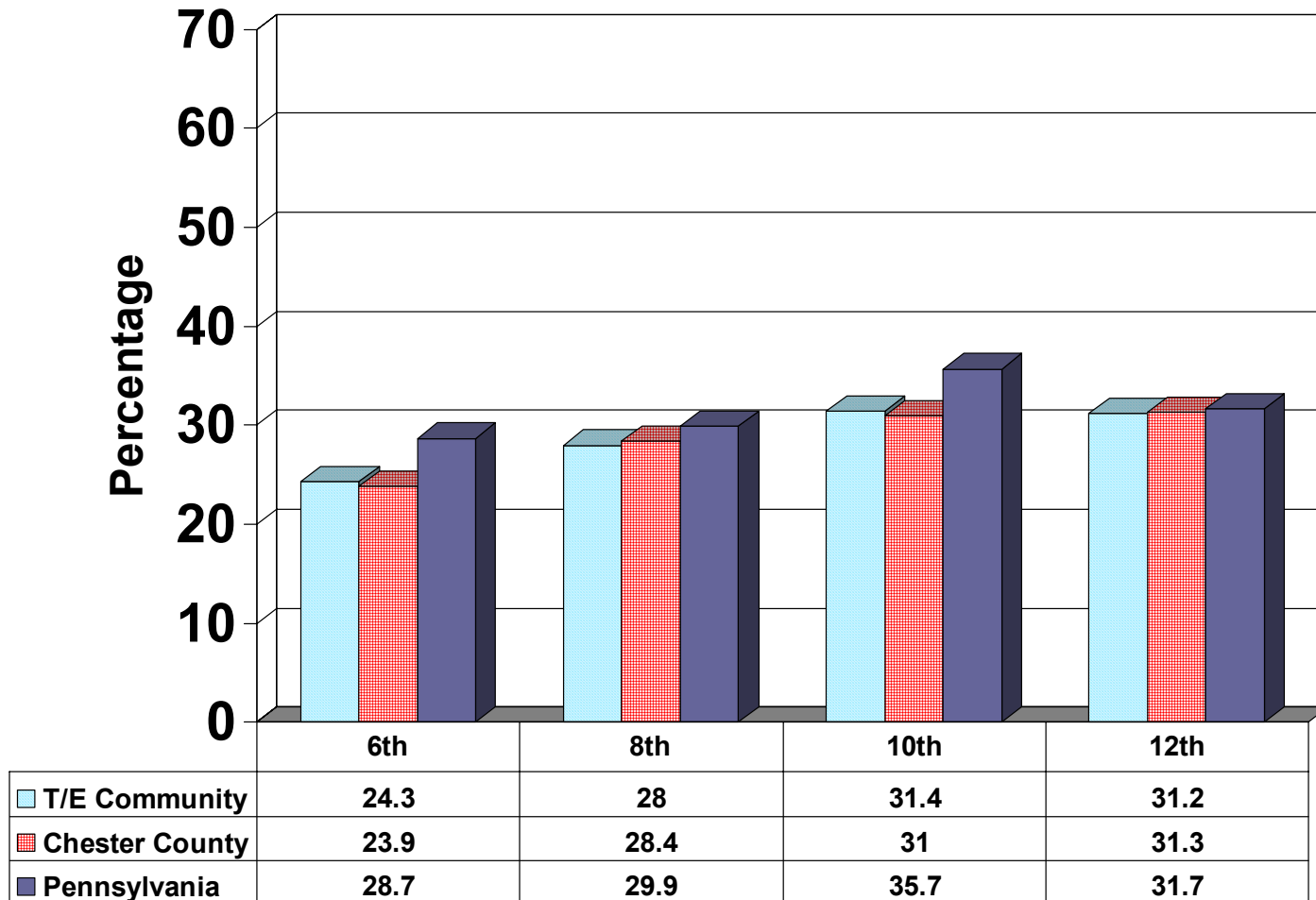
# Depression Results: In the past year, felt depressed or sad most days



# Depression Results: Sometimes I think that life is not worth it

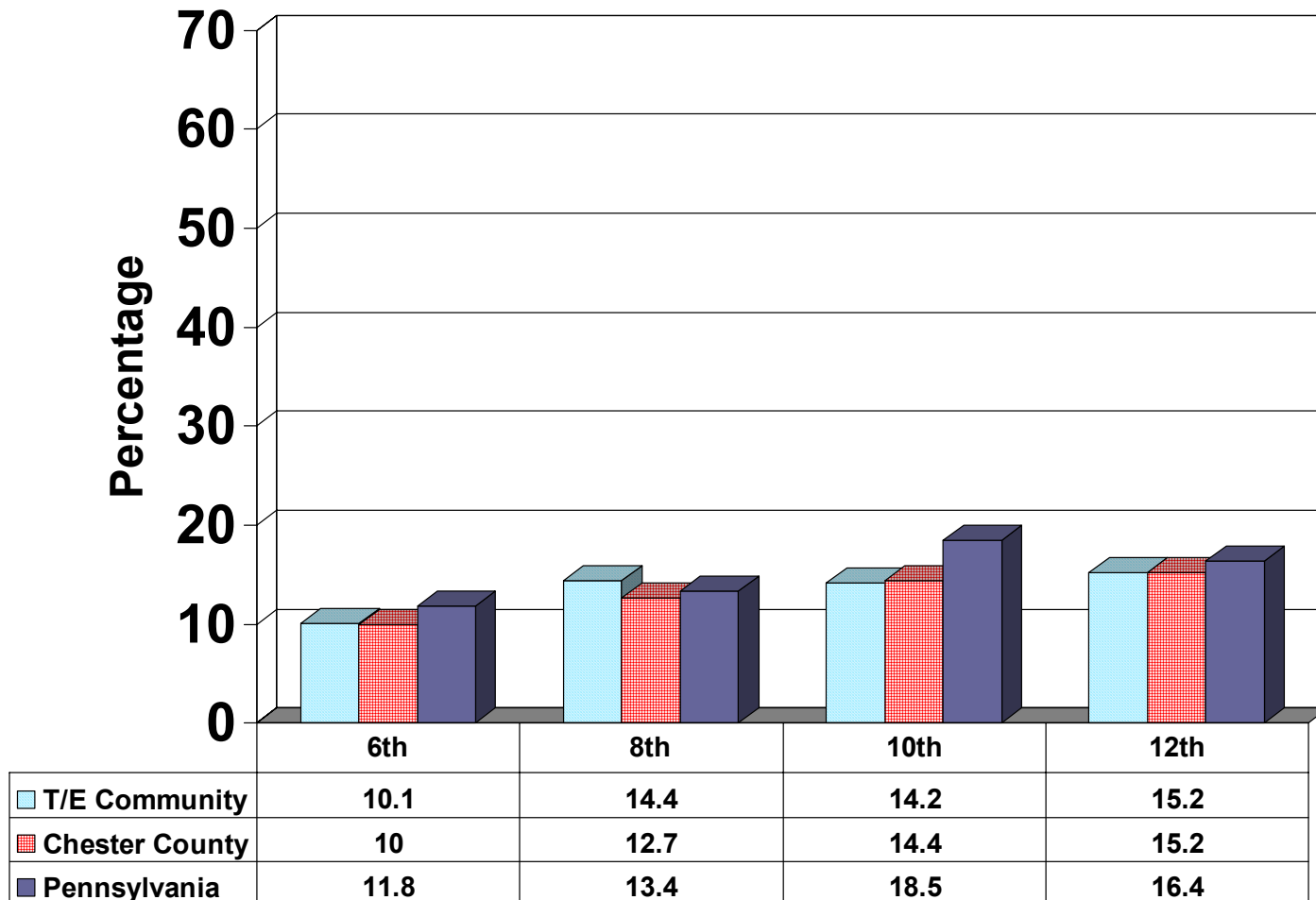


# Depression Results: At times I think I am not good at all





# Depression Results: All in all, I am inclined to think that I am a failure

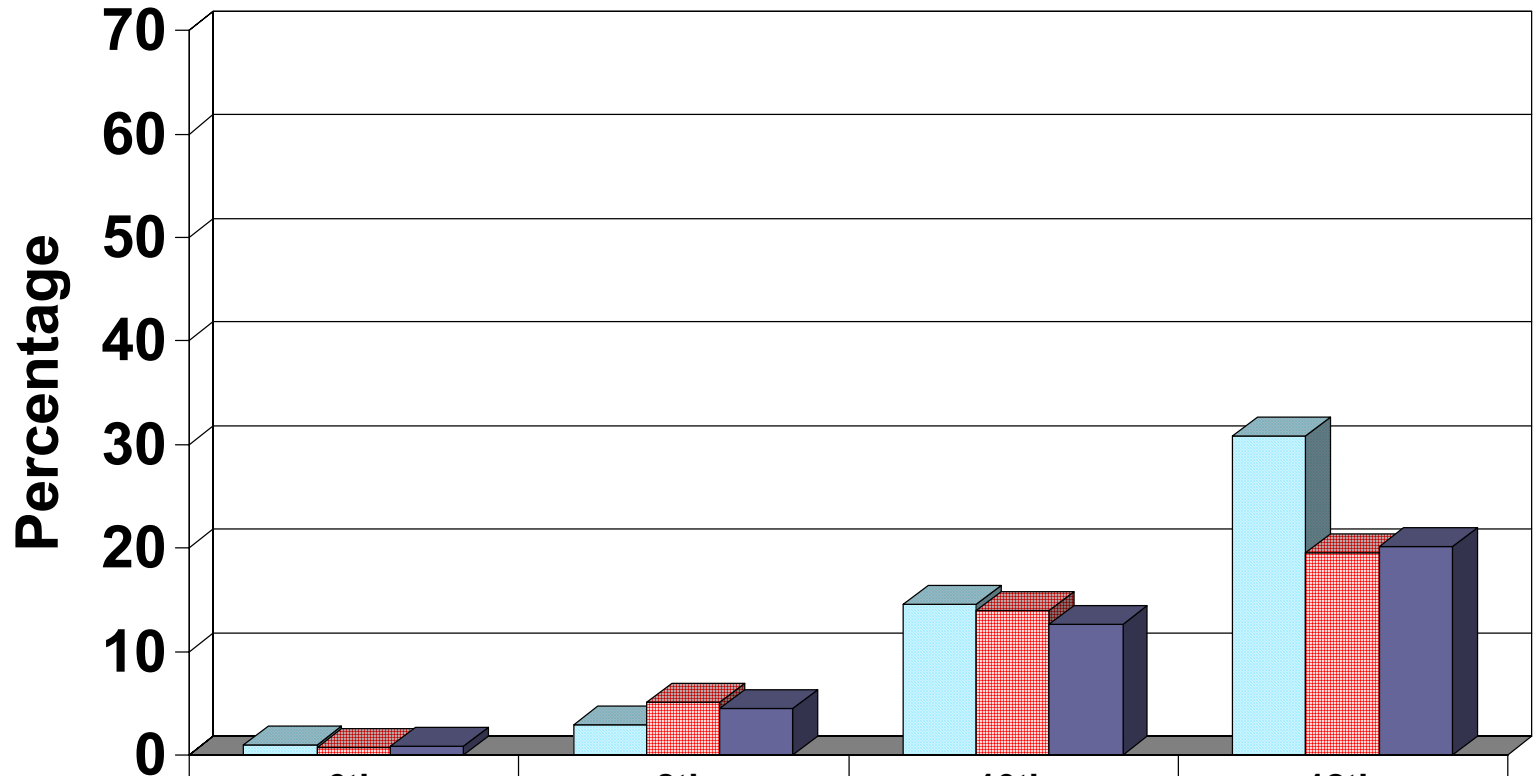







# Antisocial Behavior: Notable Results

- Being drunk or high at school or school-related activities continues to be the primary antisocial behavior among our youth.
- Compared to 12<sup>th</sup> graders statewide, 12<sup>th</sup> graders in T/E reported higher rates of selling drugs.

# Being Drunk or High at School\*: Past 12 Months



 T/E Community	<b>1</b>	<b>2.9</b>	<b>14.6</b>	<b>30.8</b>
 Chester County	<b>0.7</b>	<b>5.1</b>	<b>13.9</b>	<b>19.5</b>
 Pennsylvania	<b>0.8</b>	<b>4.5</b>	<b>12.6</b>	<b>20.1</b>

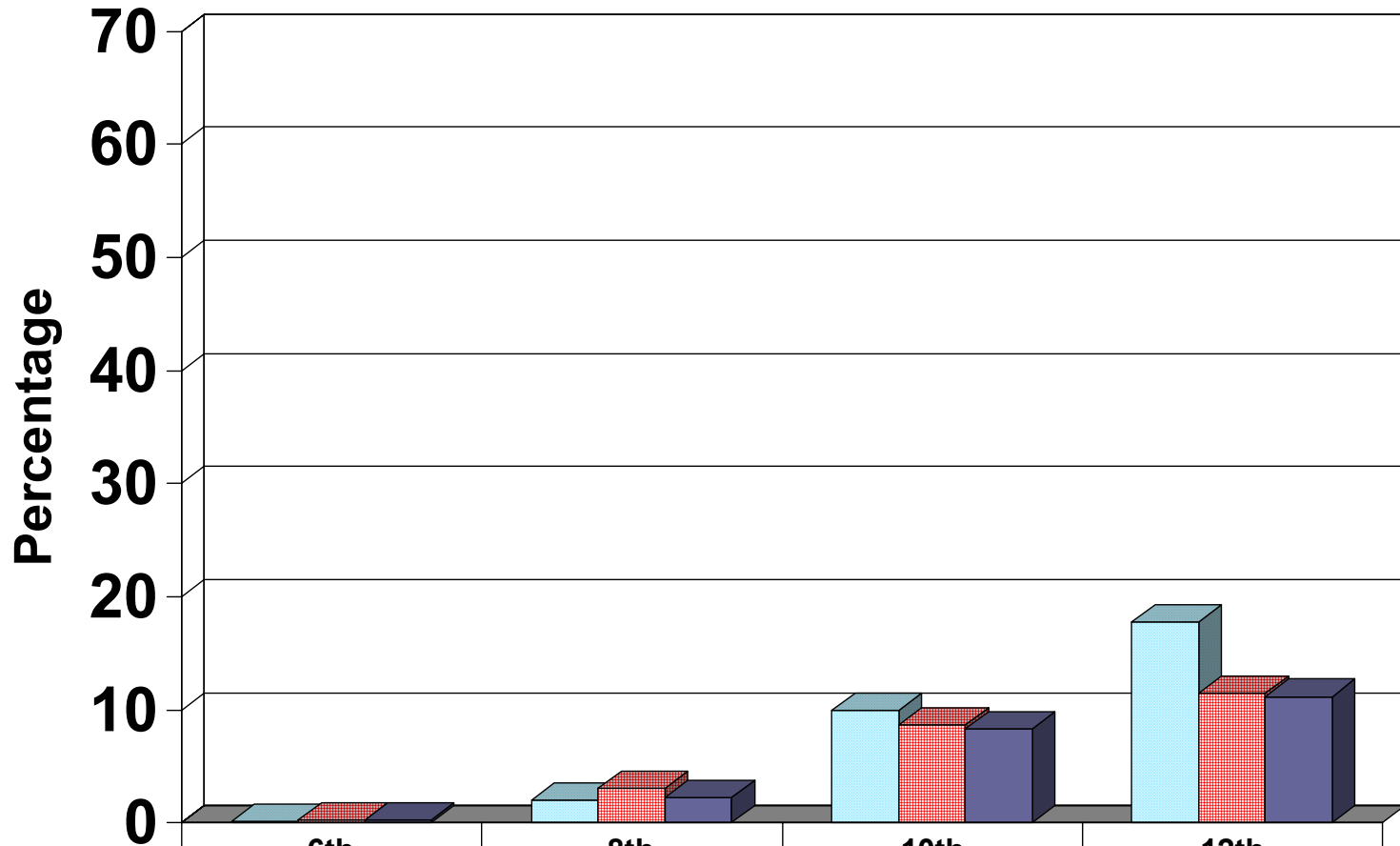
\* Please note that some respondents may interpret this item as during the school day, while others may include school-related activities beyond the school day.

*97% of 8<sup>th</sup> graders surveyed reported that they had not been drunk or high at school in the past 30 days.*

*69% of 12<sup>th</sup> graders surveyed reported that they had not been drunk or high at school in the past 30 days.*



# Selling Drugs: Past 12 Months



T/E Community	0.2	2	10	17.8
Chester County	0.3	3.1	8.7	11.5
Pennsylvania	0.3	2.3	8.3	11.2

*98% of 8<sup>th</sup> graders surveyed reported that they had not sold drugs in the past 30 days.*

*82% of 12<sup>th</sup> graders surveyed reported that they had not sold drugs in the past 30 days.*

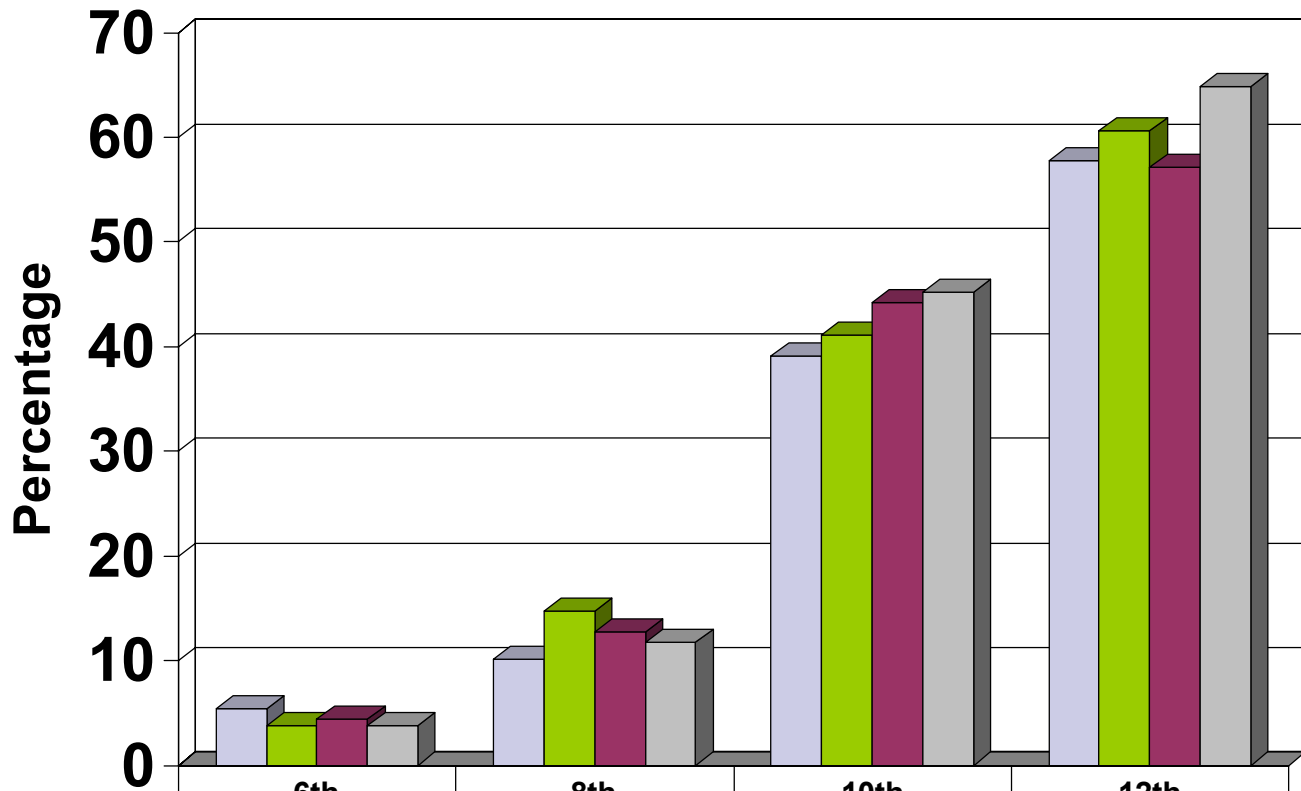




# Trends in T/E Data

- With four years of data we can now begin to look for trends in our results

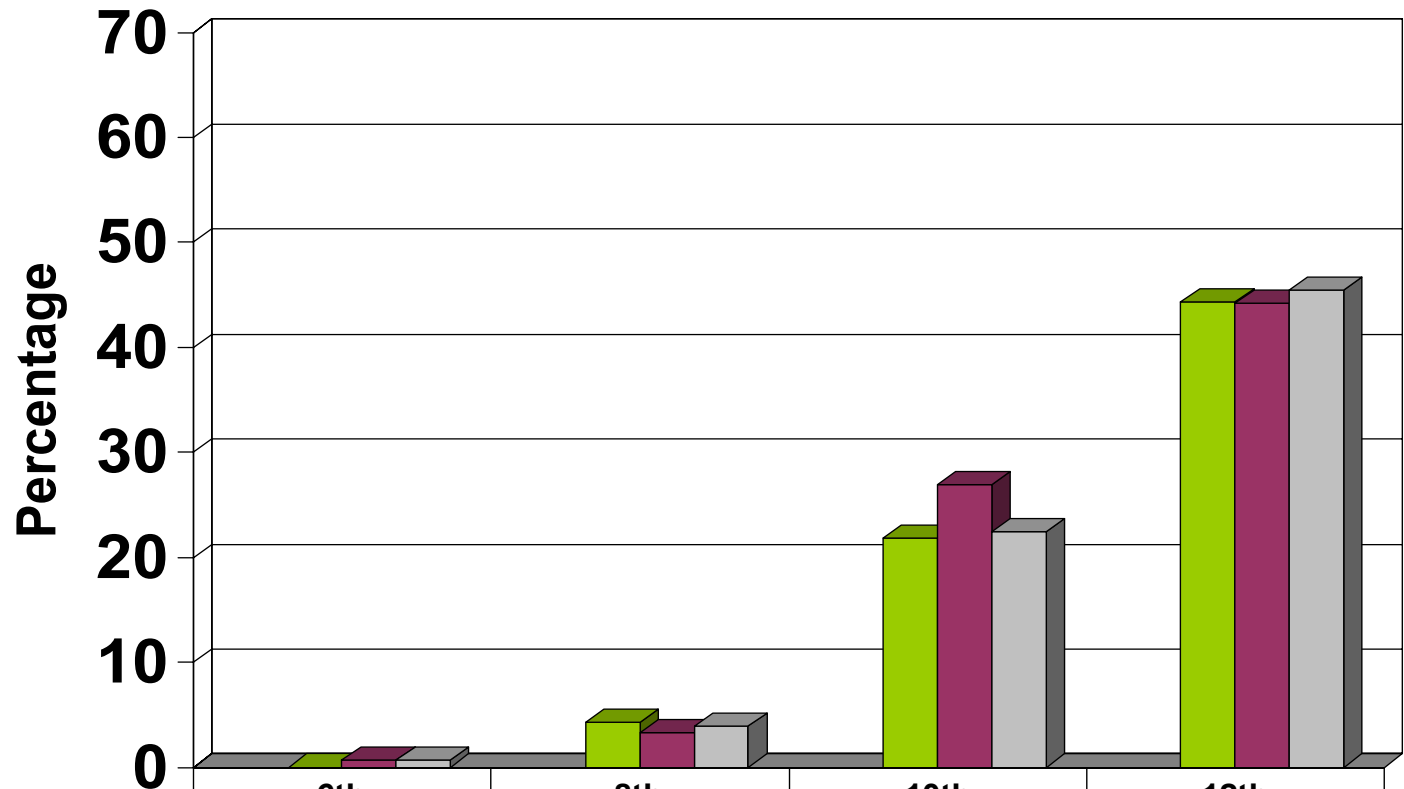
# Alcohol Past 30-Day Use: 1998, 2001, 2003, 2005



■ T/E Community - 1998	5.4	10.1	39.1	57.8
■ T/E Community - 2001	3.8	14.7	41.1	60.6
■ T/E Community - 2003	4.4	12.8	44.2	57.1
■ T/E Community - 2005	3.8	11.8	45.2	64.9

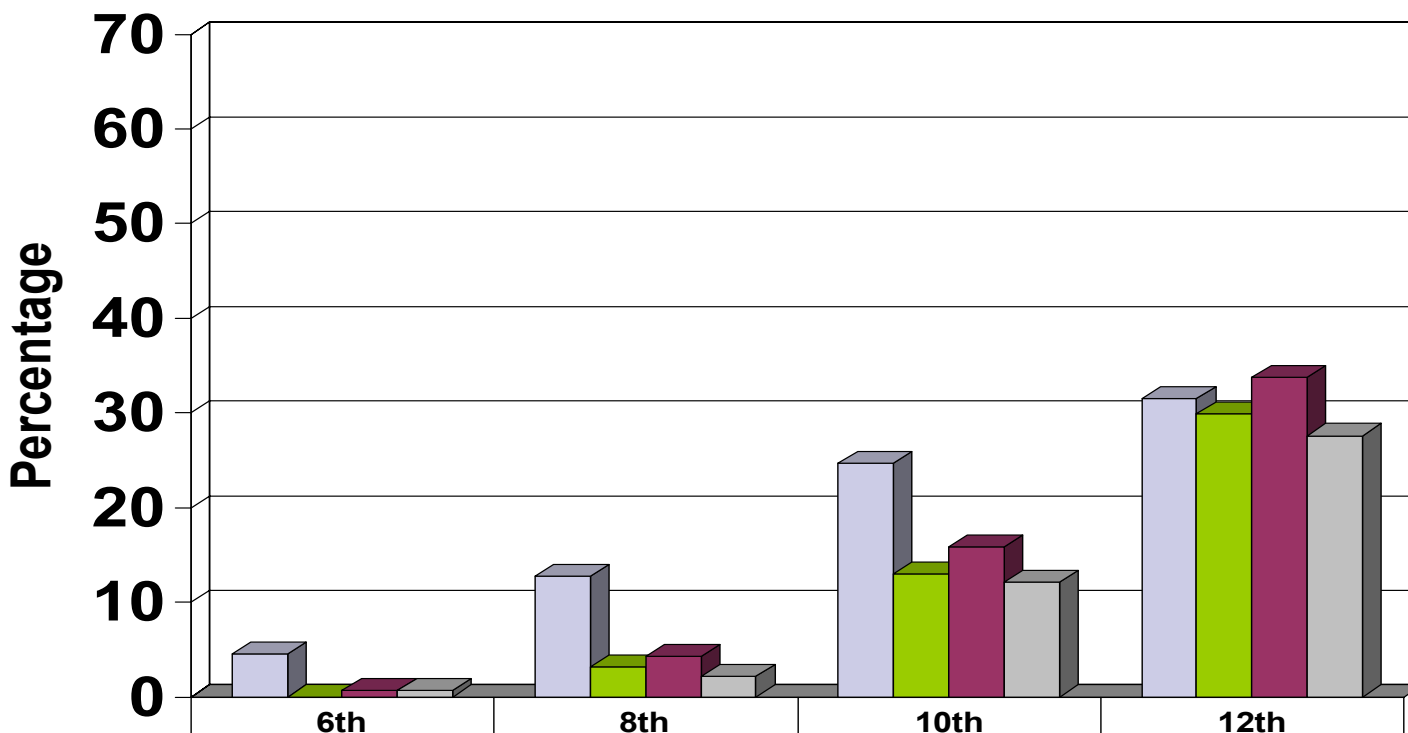


# Binge Drinking: 1998, 2001, 2003, 2005



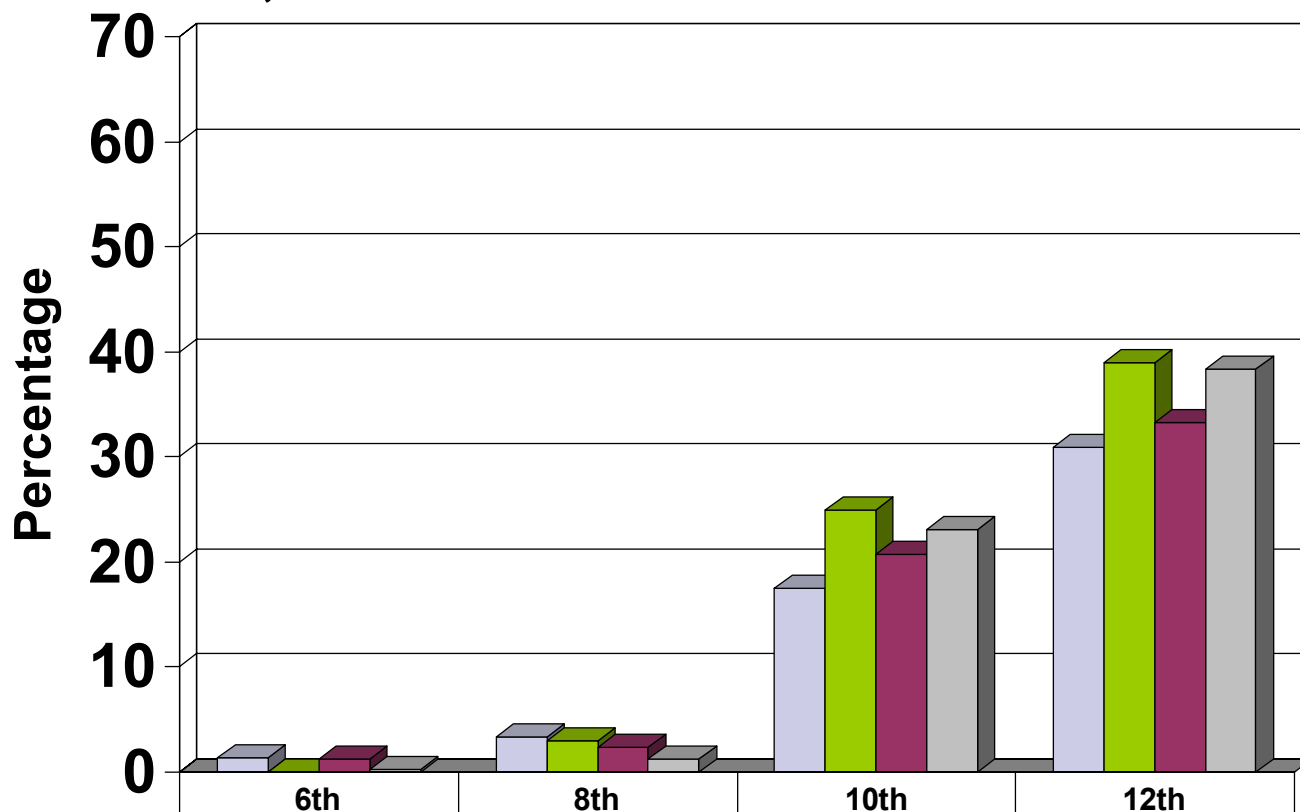
■ T/E Community - 1998	No Data	No Data	No Data	No Data
■ T/E Community - 2001	0	4.3	21.8	44.3
■ T/E Community - 2003	0.7	3.3	26.9	44.2
■ T/E Community - 2005	0.7	3.9	22.5	45.4

# Tobacco Past 30-Day Use: 1998, 2001, 2003, 2005



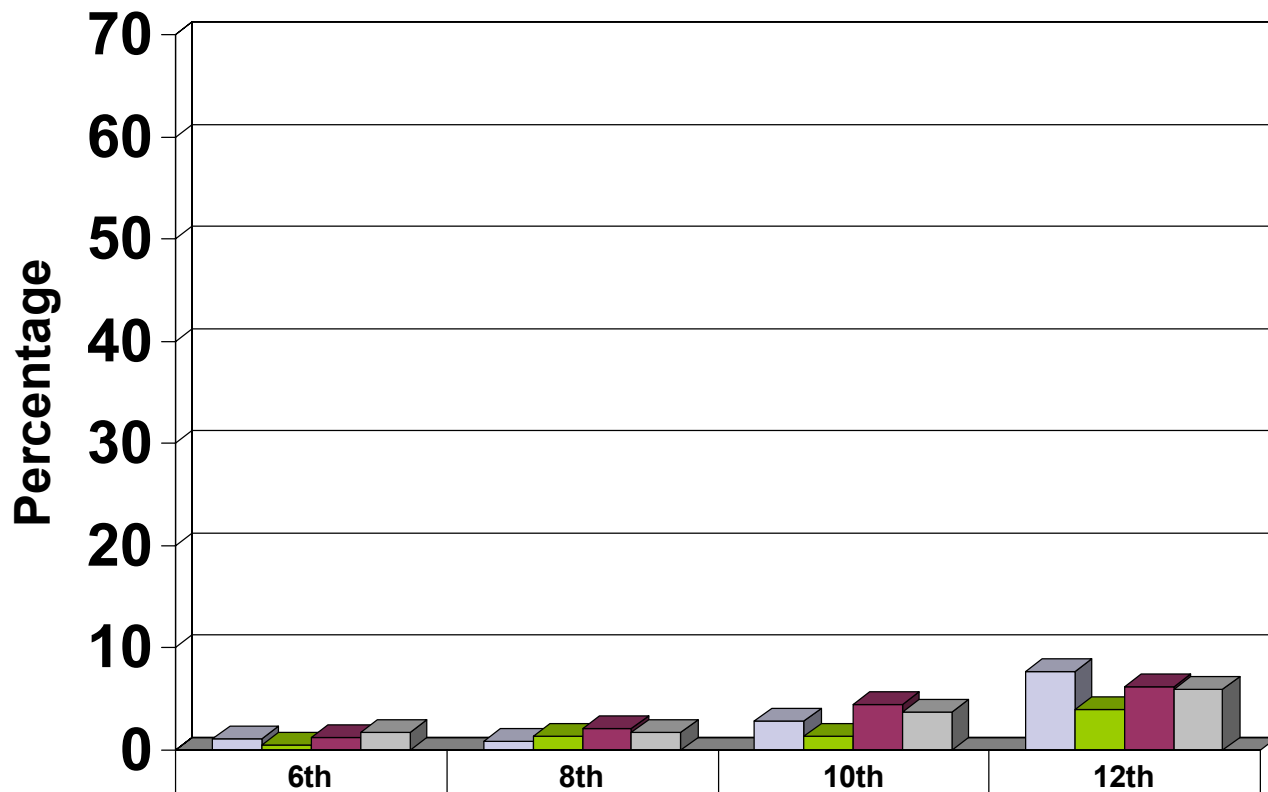
■ T/E Community - 1998	4.5	12.8	24.7	31.5
■ T/E Community - 2001	0	3.2	13	29.9
■ T/E Community - 2003	0.7	4.3	15.9	33.7
■ T/E Community - 2005	0.7	2.2	12.1	27.6

# Marijuana Past 30-Day Use: 1998, 2001, 2003, 2005



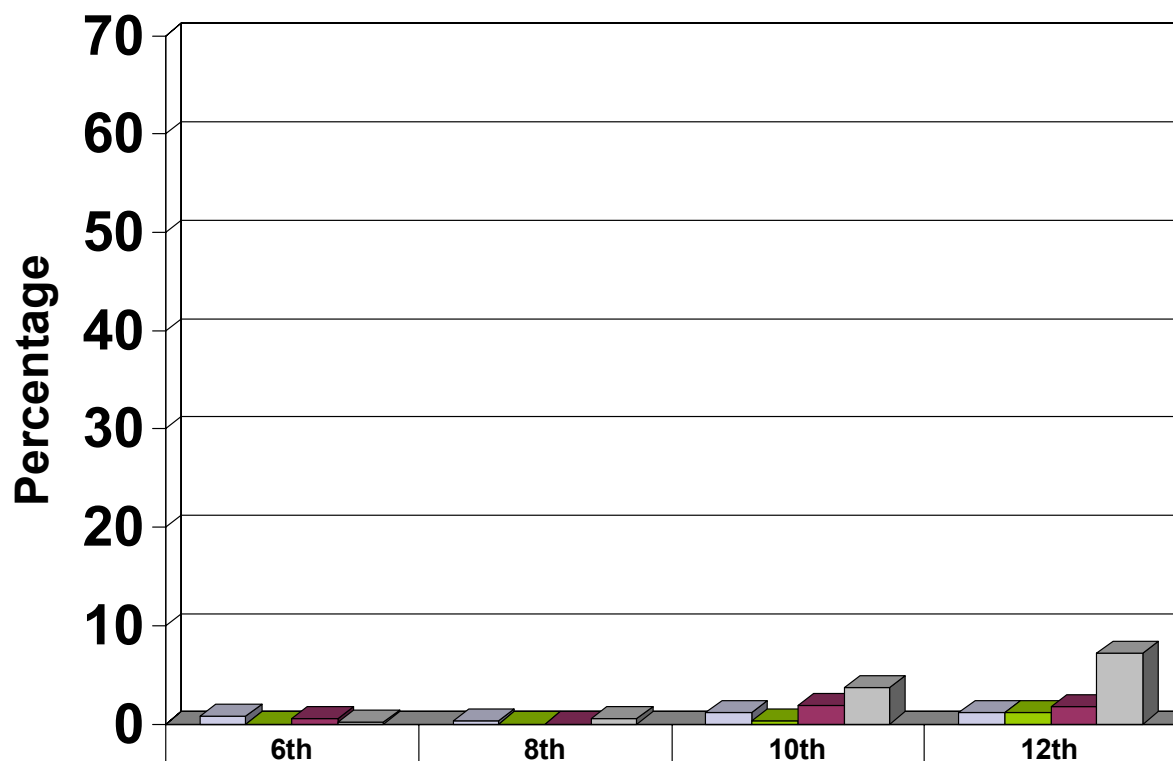
	6th	8th	10th	12th
T/E Community - 1998	1.4	3.3	17.5	30.9
T/E Community - 2001	0	3	24.9	39
T/E Community - 2003	1.2	2.4	20.7	33.3
T/E Community - 2005	0.2	1.2	23.1	38.3

# Inhalants Past 30-Day Use: 1998, 2001, 2003, 2005



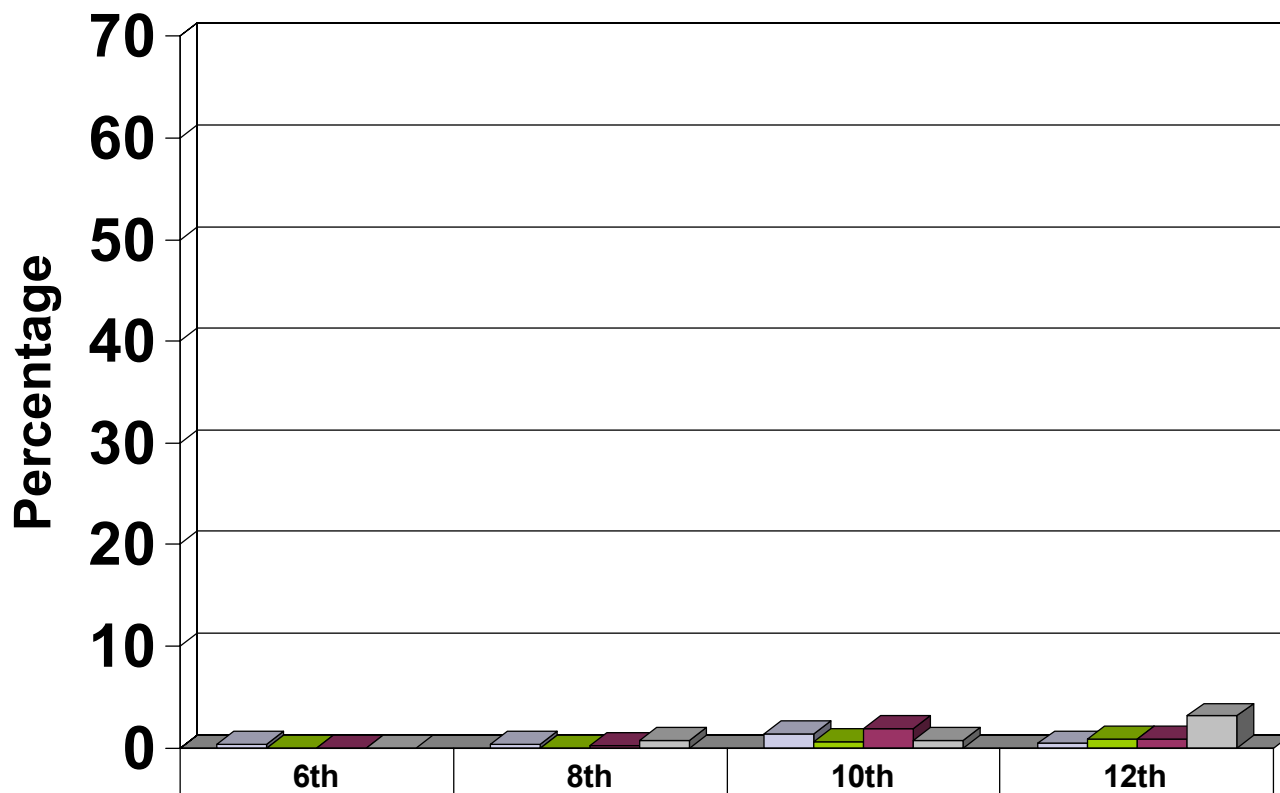
■ T/E Community - 1998	1.1	0.9	2.9	7.7
■ T/E Community - 2001	0.5	1.4	1.4	4
■ T/E Community - 2003	1.2	2.1	4.5	6.2
■ T/E Community - 2005	1.7	1.7	3.7	5.9

# Cocaine Past 30-Day Use: 1998, 2001, 2003, 2005



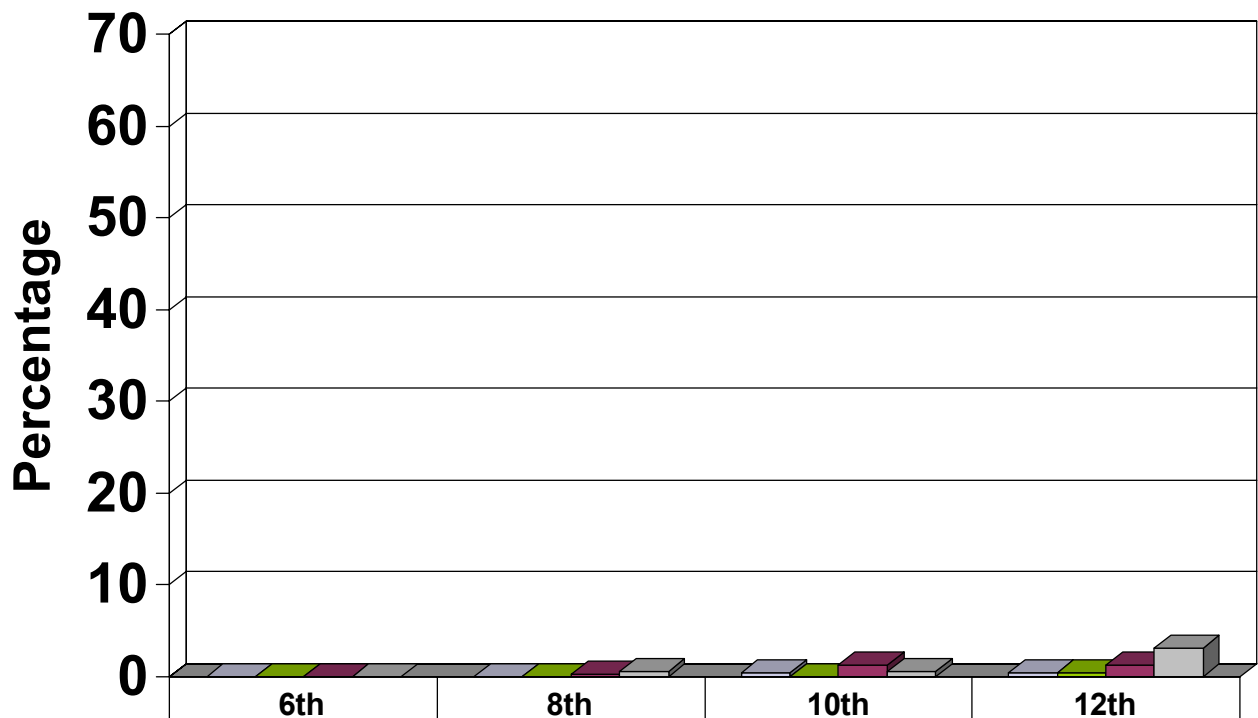
	6th	8th	10th	12th
■ T/E Community - 1998	0.8	0.3	1.1	1.2
■ T/E Community - 2001	0	0	0.3	1.2
■ T/E Community - 2003	0.5	0	1.9	1.8
■ T/E Community - 2005	0.2	0.5	3.7	7.2

# Crack Cocaine Past 30-Day Use: 2001, 2003, 2005



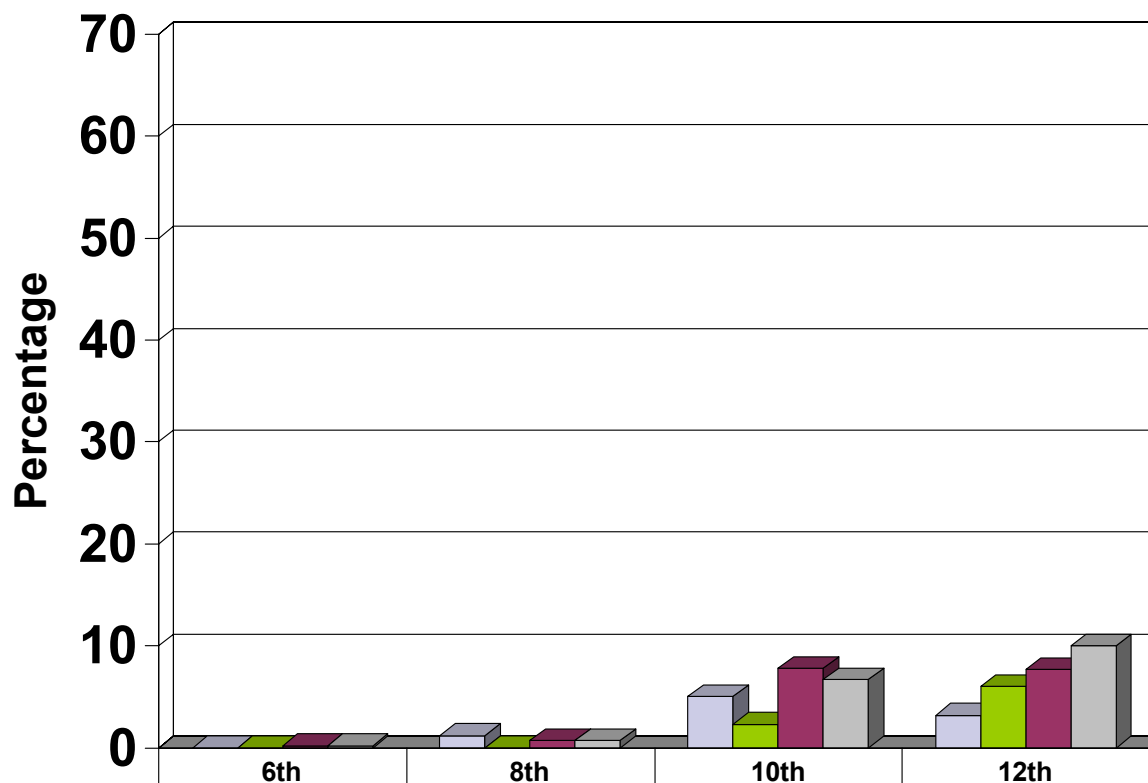
	6th	8th	10th	12th
■ T/E Community - 1998	0.3	0.3	1.4	0.4
■ T/E Community - 2001	0	0	0.6	0.8
■ T/E Community - 2003	0	0.2	1.9	0.9
■ T/E Community - 2005	0	0.7	0.7	3.1

# Heroin Past 30-Day Use: 1998, 2001, 2003, 2005



	6th	8th	10th	12th
T/E Community - 1998	0	0	0.4	0.4
T/E Community - 2001	0	0	0	0.4
T/E Community - 2003	0	0.2	1.2	1.2
T/E Community - 2005	0	0.5	0.5	3.1

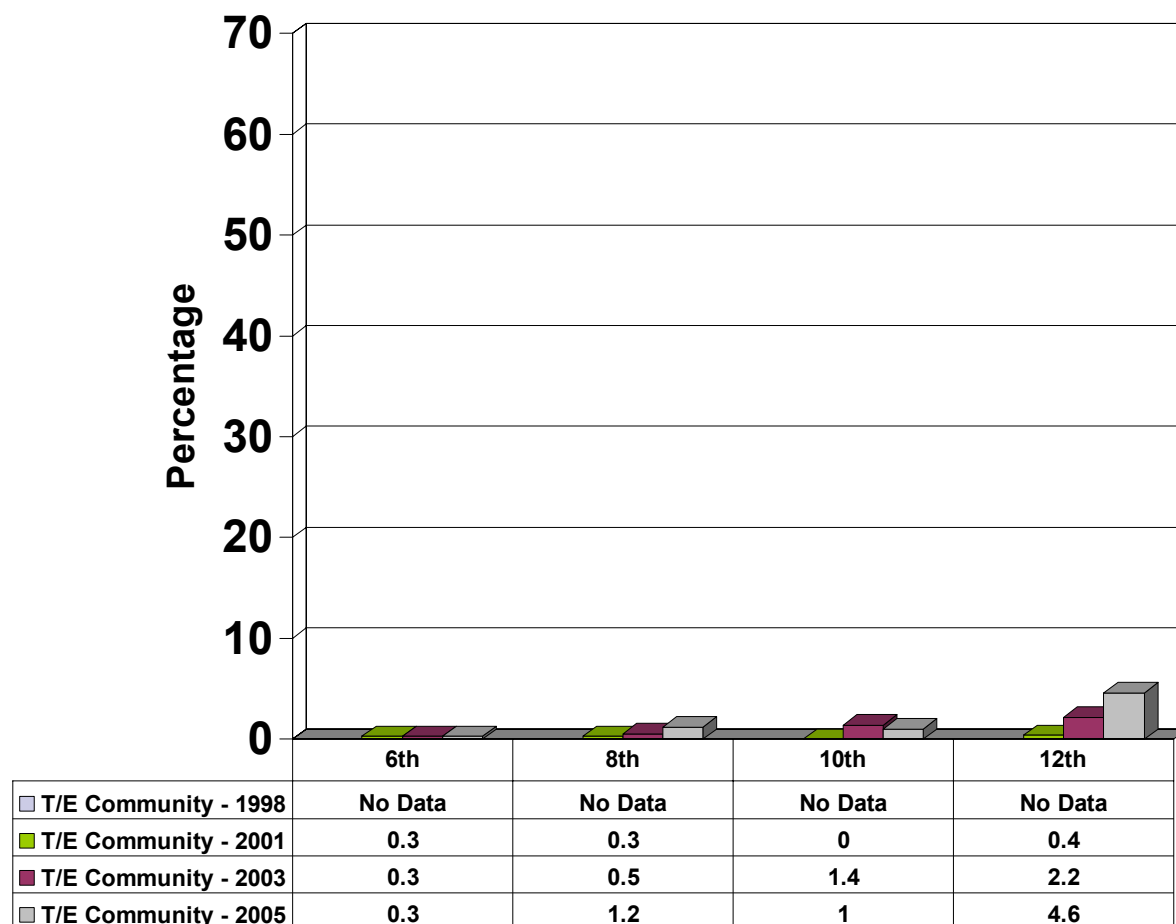
# Hallucinogens Past 30-Day Use: 1998, 2001, 2003, 2005



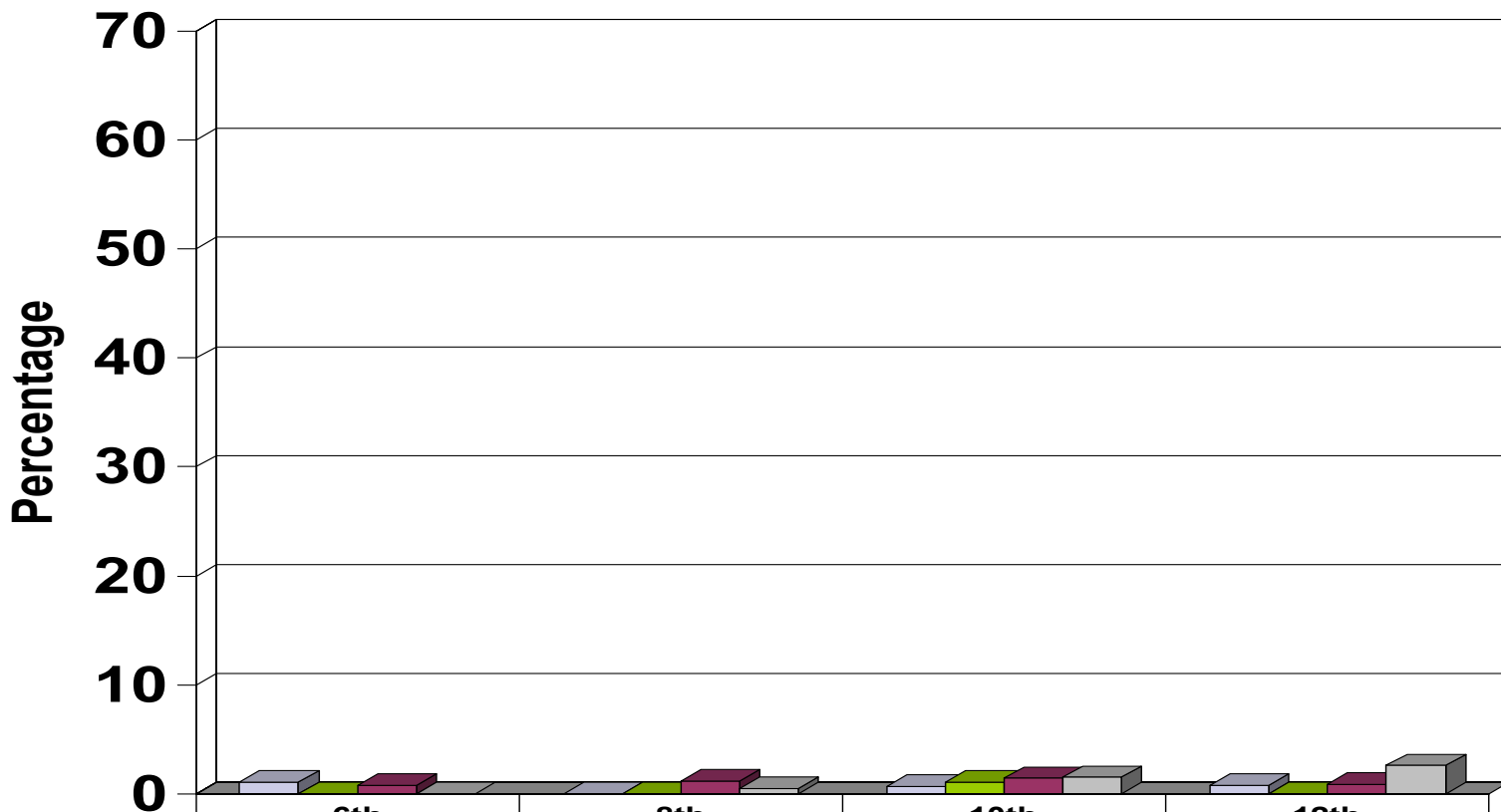
	6th	8th	10th	12th
T/E Community - 1998	0	1.2	5	3.2
T/E Community - 2001	0	0	2.3	6
T/E Community - 2003	0.2	0.7	7.8	7.7
T/E Community - 2005	0.2	0.7	6.7	10



# Methamphetamine Past 30-Day Use: 1998, 2001, 2003, 2005

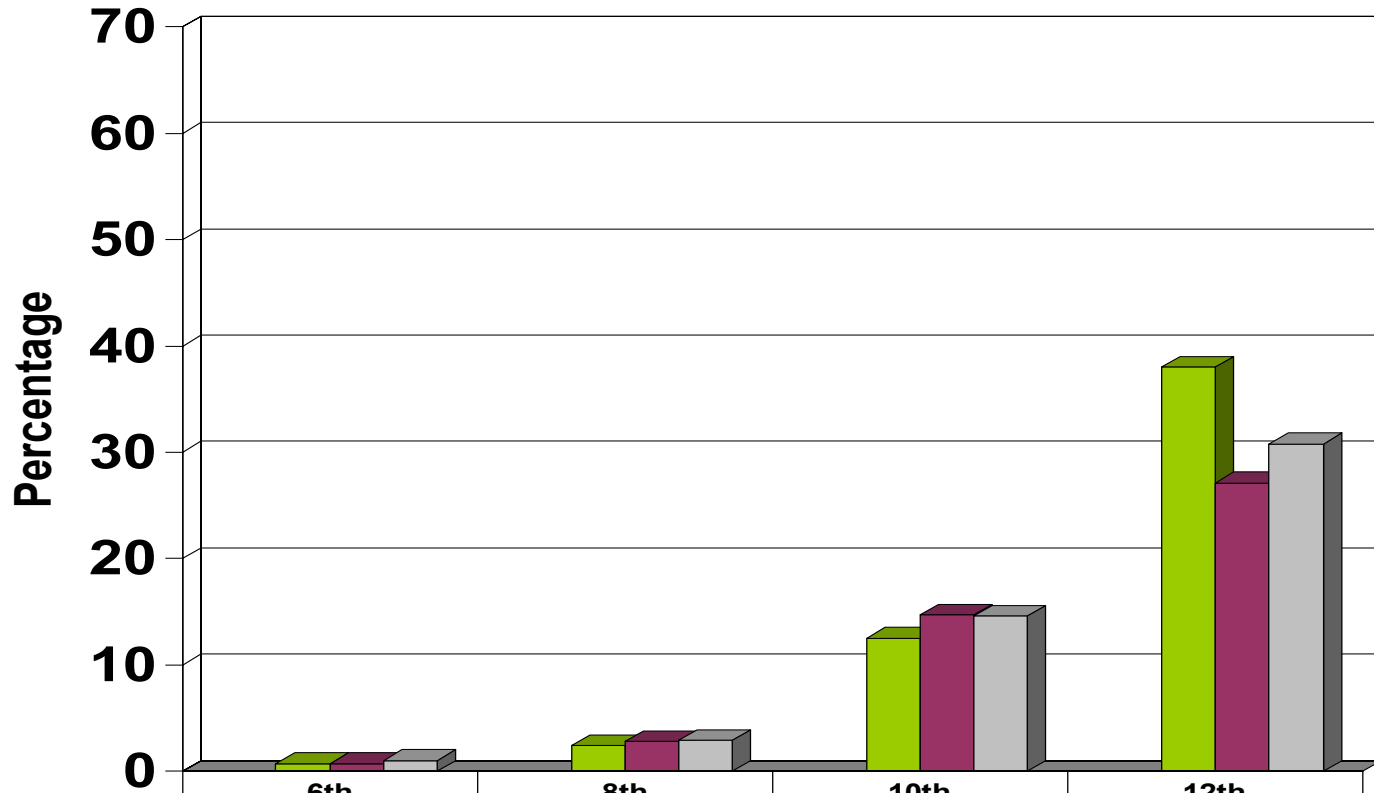


# Steroids Past 30-Day Use: 1998, 2001, 2003, 2005



	6th	8th	10th	12th
T/E Community - 1998	1.1	0	0.7	0.8
T/E Community - 2001	0	0	1.1	0
T/E Community - 2003	0.8	1.2	1.4	0.9
T/E Community - 2005	0	0.5	1.5	2.6

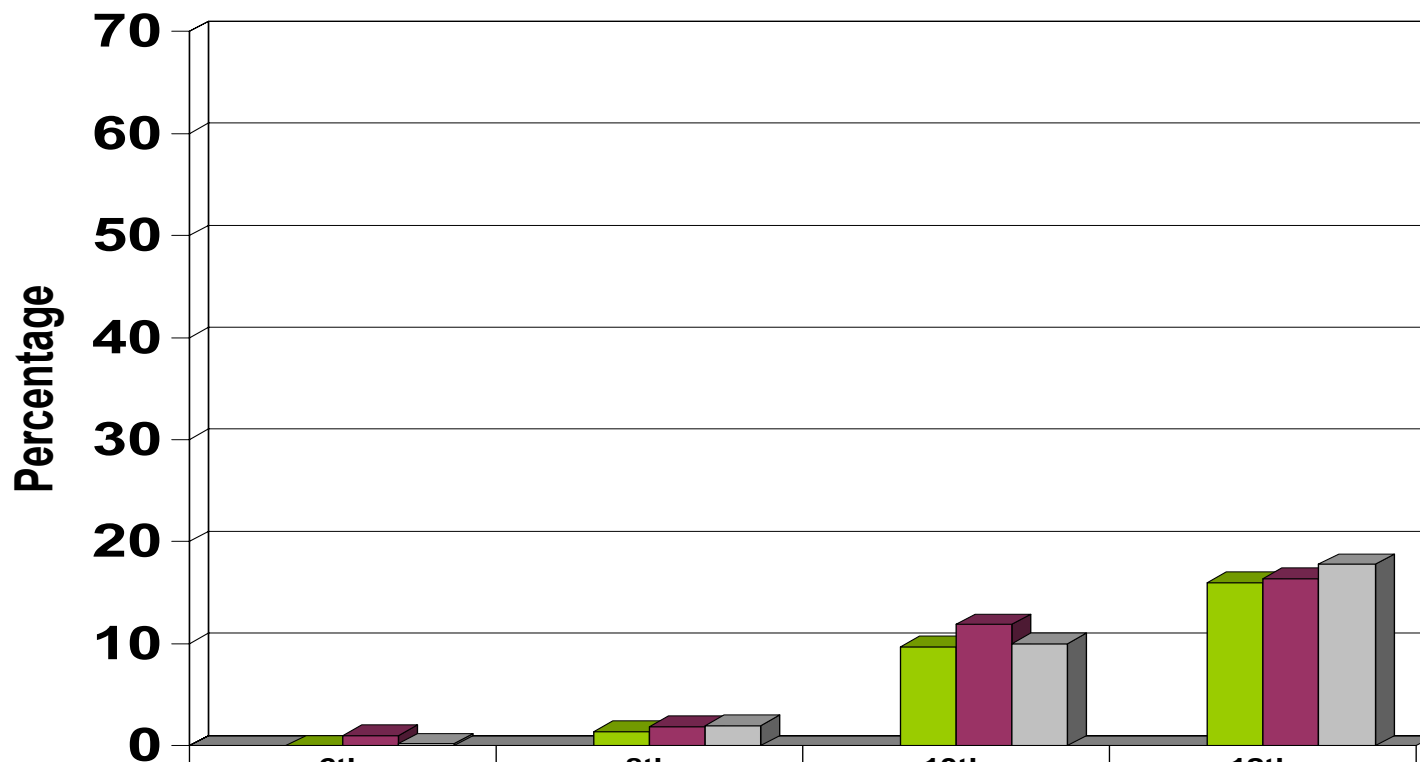
# Being Drunk or High at School\*: Past 12 Months 2001, 2003, 2005



	6th	8th	10th	12th
T/E Community - 1998	No Data	No Data	No Data	No Data
T/E Community - 2001	0.7	2.4	12.5	38
T/E Community - 2003	0.7	2.8	14.7	27.1
T/E Community - 2005	1	2.9	14.6	30.8

\* Please note that some respondents may interpret this item as during the school day, while others may include school-related activities beyond the school day.

# Selling Drugs Past 12 Months: 1998, 2001, 2003, 2005



	6th	8th	10th	12th
T/E Community - 1998	No Data	No Data	No Data	No Data
T/E Community - 2001	0	1.4	9.7	16
T/E Community - 2003	1	1.9	11.9	16.4
T/E Community - 2005	0.2	2	10	17.8

# Protective Factor Scale Scores T/E Community vs. Chester County

**Higher Scores are Preferable**

Protective Factors	6th	8th	10th	12 <sup>th</sup>	Overall	Change from 2003	County Overall
<b>Community Domain</b>							
Community Rewards for Pro-Social Involvement	65	54	46	44	52	0	48
<b>Family Domain - Questions reflect youth's perceptions</b>							
Family Attachment	73	55	50	49	57	n/a	54
Family Opportunities for Prosocial Involvement	71	55	50	49	56	n/a	54
Family Rewards for Prosocial Involvement	76	59	53	49	59	n/a	57
<b>School Domain</b>							
School Opportunities for Prosocial Involvement	68	65	68	64	66	+1	59
School Rewards for Prosocial Involvement	64	57	52	50	56	+2	50
<b>Individual/Peer Domain</b>							
Religiosity	60	57	52	46	54	-1	52
Belief in the Moral Order	78	64	50	47	60	-2	59

# Risk Factor Scale Scores

## T/E Community vs. Chester County

**Lower Scores are Preferable**

Risk Factors	6th	8th	10th	12th	Overall	Change from 2003	County Overall
<b>Community Domain</b>							
Low Neighborhood Attachment	29	39	46	50	41	-2	47
Community Disorganization	32	36	44	43	39	-2	46
Personal Transitions and Mobility	47	46	49	49	48	-1	53
Laws & Norms Favorable to Drug Use	21	32	53	65	43	0	46
Perceived Availability of Drugs	15	23	45	56	35	+1	34
<b>Family Domain – Questions reflect youth's perceptions</b>							
Poor Family Supervision	28	42	54	63	47	n/a	47
Poor Family Discipline	22	35	50	57	41	n/a	43
Family History of Antisocial Behavior	20	30	44	54	37	n/a	39
Parental Attitudes Favorable Toward ATOD Use	34	39	51	66	47	n/a	46
Parental Attitudes Favorable Toward Antisocial Behavior	38	45	51	56	57	n/a	48

# Risk Factor Scale Scores

## T/E Community vs. Chester County

**Lower Scores are Preferable**

Risk Factors	6th	8th	10th	12 <sup>th</sup>	Overall	Change from 2003	County Overall
<b>School Domain</b>							
Poor Academic Performance	39	44	42	42	42	0	46
Lack of Commitment to School	28	42	47	51	42	0	45
<b>Peer &amp; Individual Domain</b>							
Rebelliousness	27	42	53	57	45	+4	44
Friends' Delinquent Behavior	34	38	47	51	42	+1	46
Friends' Use of Drugs	19	28	56	70	43	+1	41
Peer Rewards for Antisocial Behavior	31	39	65	70	51	0	47
Favorable Towards Antisocial Behavior	26	39	53	56	43	-2	44
Favorable Attitudes Towards ATOD Use	21	30	56	69	44	+1	40
Low Perceived Risks of Drug Use	22	24	41	51	34	+2	34
Early Initiation of Drug Use and Antisocial Behavior	21	27	44	48	35	0	34
Sensation Seeking	35	35	49	57	44	0	42

# Strengths to Build On

- **Protective Factor** scale scores (higher scores are preferable):
  - All scores continue to be over 60 points for 6<sup>th</sup> graders
  - All scores continue to be over 50 points for 8<sup>th</sup> graders
  - “School Opportunities for Prosocial Involvement” at 64 points or higher for all surveyed grades
  - “School Rewards for Prosocial Involvement” at 50 points or higher for all surveyed grades





# Strengths to Build On

- **Risk Factor** scale scores (lower scores are preferable):
  - “Community Disorganization” 44 points or lower for all surveyed grades
  - “Poor Academic Performance” 44 points or lower for all surveyed grades



# Challenges to Address

- **Protective Factor** scale scores (higher scores are preferable):
  - “Community Rewards for Prosocial Involvement” reaches a low of 44 points for 12<sup>th</sup> graders

# Challenges to Address

- **Risk Factor** scale scores (lower scores are preferable):
  - “Parental Attitudes Favorable Towards Antisocial Behaviors” at 57 points overall
  - “Parental Attitudes Favorable Towards ATOD Use” at 69 points for 12<sup>th</sup> graders
  - “Friends Use of Drugs” at 56 and 70 points 10<sup>th</sup> and 12<sup>th</sup> graders, respectively.
  - “Peer Rewards for Antisocial Behavior” at 65 and 70 points 10<sup>th</sup> and 12<sup>th</sup> graders, respectively.



# What Additional Community Initiatives Are Being Implemented

- Formation of SADD Chapter at T/E and Valley Forge Middle Schools
  - Early Initiation of Drug Use and Antisocial Behavior (Risk)
  - Friends' Use of Drugs (Risk)
  - Peer Rewards for Antisocial Behavior (Risk)
  - Favorable Attitudes toward ATOD Use (Risk)

# What Additional Community Initiatives Are Being Implemented

- Priority on Community Mobilization Efforts to address:
  - Community Rewards for Prosocial Involvement (Protective)
  - Belief in the Moral Order (Protective)
  - Laws & Norms Favorable to Drug Use (Risk)



# What Additional Community Initiatives Are Being Implemented

- Implementation of Social Norming Campaign
  - Friends' Use of Drugs (Risk)
  - Favorable Attitudes toward ATOD Use (Risk)
  - Early Initiation of Drug Use and Antisocial Behavior (Risk)



# Community Action Steps

- Implement ARCH Party Guidelines in Your Home
  - Parents' attitudes about alcohol, tobacco and other drugs (Risk)



# Community Action Steps

- Work with ARCH to Establish SAFE HOME Parent Networks
  - Parents' attitudes about alcohol, tobacco and other drugs (Risk)
  - Parents' attitudes about antisocial behavior (Risk)





# Community Action Steps

- Involve Your Community Organization in Prevention Efforts
  - Community Rewards for Pro-Social Involvement (Protective)
  - Laws & Norms Favorable to Drug Use (Risk)
  - Belief in the Moral Order (Protective)

# Community Action Steps

- Participate in *ARCH Cares* ListServ
  - Sign up at <http://groups.yahoo.com/group/archcares/>
  - Parents' attitudes about alcohol, tobacco and other drugs (Risk)
  - Parents' attitudes about antisocial behavior (Risk)



# Community Action Steps

- Participate in ARCH Roundtable  
Discussions on January 18<sup>th</sup>, 7:30pm at  
Upper Main Line YMCA
- Attend an ARCH meeting, held the first  
Wednesday of each month at 8:30am at  
the Education Services Center



# Tredyffrin/Easttown Community

Overview of 2005 PA Youth Survey Results

November 6, 2006